

MORGAN H LEWIS



Asking Price £350,000

Range Drive, Wigan WN6 0GU

- *Detached Four Bedroom
- *Utility Room
- *Downstairs wc
- *En-suite Shower Room
- *Spacious Garden

MORGAN H LEWIS



MORGAN H LEWIS

Located in the thriving village of Standish, on this exclusive and popular development and constructed by highly acclaimed builders Morris Homes. This executive detached home extends to circa 1213 sq ft of beautiful accommodation and has been completed to the highest of standards with an exceptional specification.

The accommodation briefly comprises of an entrance hallway which leads through the home and in to a forward-facing lounge with a lovely Bay window. The showstopper in this beautiful design of home is a large open dining space and luxury appointed kitchen. This stunning room features French patio doors leading into the turfed garden, integrated Neff appliances within the kitchen. A practical utility room with downstairs wc leads off, ideal for the laundry appliances and has a side access door.

Four beautiful bedrooms are located to the first floor complimented by a family bathroom and impressive en suite shower room, complete with shower, leading off the master bedroom and which features the signature Morris Homes arched window. Luxury vanity wash hand basins and heated towel rails enhance the bathroom appointment. There is excellent off road parking to the front of the property and which leads to the integral garage, ideal for additional storage.

The Historic Village of Standish is a short walk away and the development is also within walking distance of the highly acclaimed St Wilfrid's Primary School. The village offers an excellent range of amenities including a leisure centre, lovely restaurants and bars, local independent shopping facilities including two supermarkets, doctors and dentist and library. There are also excellent transport links with a mainline railway station just 10 minutes drive as is access to both the M6 and M61 motorway. Equally there are beautiful parks, Haigh Country Estate and lots of countryside all close by. Viewings of this delightful home which is now ready to move in to and is available with no onward chain are now available

MORGAN H LEWIS

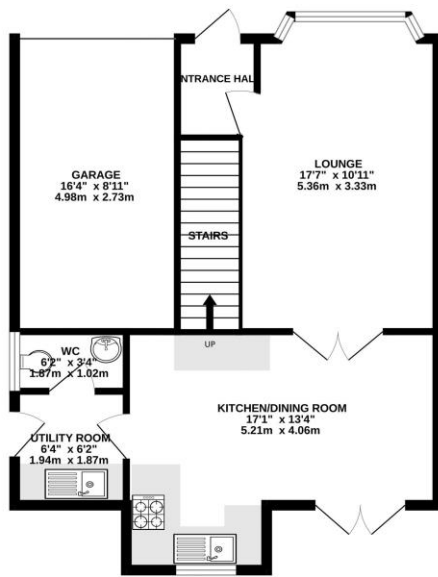


MORGAN H LEWIS

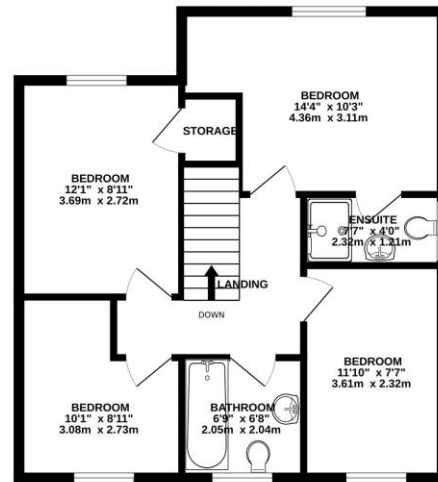


MORGAN H LEWIS

GROUND FLOOR
642 sq.ft. (59.6 sq.m.) approx.



1ST FLOOR
571 sq.ft. (53.0 sq.m.) approx.



TOTAL FLOOR AREA : 1213 sq.ft. (112.7 sq.m.) approx.

Whilst every attempt has been made to ensure the accuracy of the floorplan contained here, measurements of doors, windows, rooms and any other items are approximate and no responsibility is taken for any error, omission or mis-statement. This plan is for illustrative purposes only and should be used as such by any prospective purchaser. The services, systems and appliances shown have not been tested and no guarantee as to their operability or efficiency can be given.

Made with Metropix ©2024

