

MORGAN H LEWIS



Asking Price £149,950

Gidlow Lane, Wigan WN6 7BW

- *Three Bedroom Mid Terraced Property
- *No Onward Chain
- *Two Large Reception Rooms
- *Walking Distance to Mesnes Park and Wigan Centre
- *Excellent First Time Buy or BTL

MORGAN H LEWIS



MORGAN H LEWIS

A fantastic opportunity for first time buyers and rental investors, this terraced house has three bedrooms and is situated along Gidlow Lane, in the heart of Springfield within walking distance of Mesnes Park, the Town Centre and Stations for travel to Liverpool and Manchester.

There is central heating and double glazing and the accommodation briefly comprises, to the Ground Floor, entrance porch leading to hall with stairs to first floor, lounge at front with fireplace and gas fire, double glazed bay window and lovely original ornate coving. French doors lead onto the dining room to the rear with fireplace and gas fire, double glazed window and radiator, kitchen with wall and base units, single drainer sink unit, radiator, double glazed window and external door. A family bathroom finishes off the ground floor, with suite comprising an closed shower unit, vanity washbasin and WC, double glazed window and towel radiator.

To the First Floor there is a large landing, which gives access to the full upstairs accommodation. Three good sized bedrooms, each with double glazed window, with the master bedroom spanning the entire width of the property. Externally, the property benefits from good sized paved yard, which is lovely and bright, providing a low maintenance area to relax or enjoy the outdoors. The property is double glazed and centrally heated and whilst it requires some updating it offers fantastic potential.

There is no onward chain and viewings are recommended to appreciate both the location and the accommodation on offer.

MORGAN H LEWIS

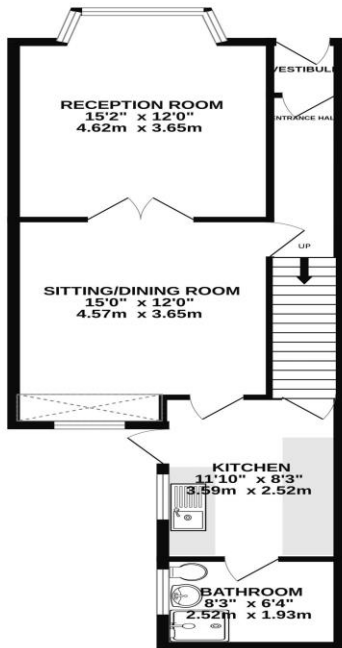


MORGAN H LEWIS

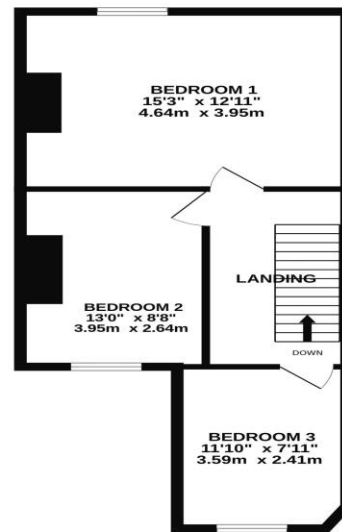


MORGAN H LEWIS

GROUND FLOOR
573 sq. ft. (53.2 sq.m.) approx.



1ST FLOOR
471 sq. ft. (43.8 sq.m.) approx.



TOTAL FLOOR AREA : 1044 sq. ft. (97.0 sq.m.) approx.

Whilst every attempt has been made to ensure the accuracy of the floorplan contained here, measurements of doors, windows, rooms and any other items are approximate and no responsibility is taken for any error, omission or mis-statement. This plan is for illustrative purposes only and should be used as such by any prospective purchaser. The services, systems and appliances shown have not been tested and no guarantee as to their operability or efficiency can be given.
Made with Metropex ©2024

