

MORGAN H LEWIS



Asking Price £500,000

Carnegie Drive, Wigan WN4 9SH

- *Executive Detached home
- *Situated On a Highly Sought After Cul De Sac
- *Large Private Corner Plot
- *Four Bedrooms
- *Driveway Parking for Multiple Vehicles

MORGAN H LEWIS



MORGAN H LEWIS

Probably one of the most desirable addresses in Ashton-in Makerfield, this beautifully presented, executive detached house occupies a large corner plot in a fantastic cul-de-sac location. The location allows easy access to local schools and shops and is a short drive to the M6 Motorway and East Lancs Road for commuters.

Built to a high standard and having been very well maintained by the current owners, this property is presented in turn-key condition. Upon entry to the property, the bright welcoming hallway gives access to the entire ground floor accommodation. There is a dining room to the front of the property, with bay window and French doors leading into the rear living room, with wooden flooring, gas fire and sliding doors leading out to the gardens. The kitchen features a range of modern high gloss doors with contrasting worktops, double oven, five burner gas stove, and fridge/freezer. Just off from the kitchen is a handy matching utility space, which gives access to the garden. Also to the ground floor is another living room, which is currently being used as an office space, but could easily be a cosy snug, extra bedroom or playroom. Lastly to the ground floor is a large integral double garage and downstairs w.c. The entire first floor has been recently recarpeted and repainted, there are four generous bedrooms, with the master having a recently fitted ensuite bathroom. The master bathroom finishes off the first floor, which again is well appointed, modern and impressive, finished with sleek brown tiling and consisting of shower cubicle, bath, vanity basin and w.c.

To the outside the property occupies an impressive corner plot on a quiet cul-de-sac with ample parking for multiple vehicles and an outlook onto mature trees and the bowling green. The rear gardens are private and mainly laid to lawn, with plenty of space for entertaining and relaxing.

Early viewings are recommended to avoid disappointment on this desirable home.

MORGAN H LEWIS



MORGAN H LEWIS

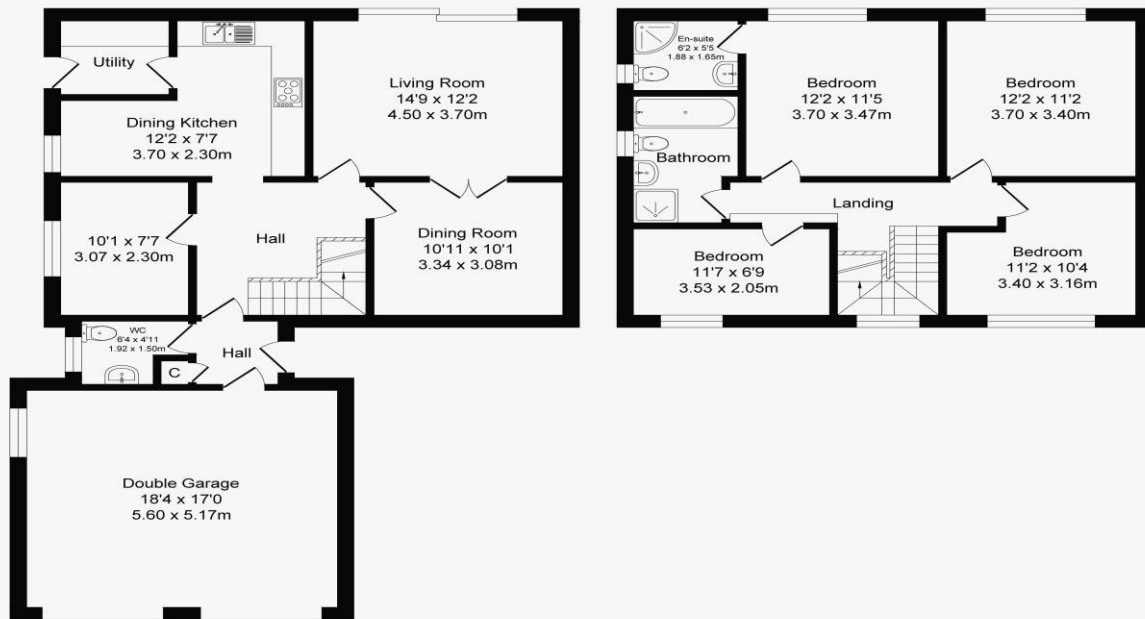


MORGAN H LEWIS

Carnegie Drive

Total Approx. Floor Area 1744 Sq.ft. (162.1 Sq.M.)

Surveyed and drawn by Lens Media for illustrative purposes only. Not to scale. Whilst every attempt was made to ensure the accuracy of the floor plan, all measurements are approximate and no responsibility is taken for any error.



Ground Floor
Approx. Floor Area 1062 Sq.Ft (98.7 Sq.M.)

First Floor
Approx. Floor Area 682 Sq.Ft (63.4 Sq.M.)