

# MORGAN H LEWIS



**Asking Price £355,000**

**Bethersden Road, Wigan WN1 2RL**

- \*Impressive Detached Home
- \*Situated in the Heart of Whitley
- \*Five Bedrooms
- \*Driveway Parking
- \*Close to Excellent Local Schools and Amenities



# MORGAN H LEWIS



# MORGAN H LEWIS

Situated on a quiet street in the heart of Whitley on Bethersden Road, this detached family home offers over 1800sqft of living space, with five bedrooms, two bathrooms and three large reception rooms, this home offers plenty of space for family life situated in a highly desirable location within walking distance of excellent local schooling, shops, trendy bars and transport links.

The accommodation begins with an entrance porch that includes a storage area and leads into the family dining room. This impressive space offers access to the rest of the house and the first floor including the wonderfully bright lounge to the rear, the handy study, which could be repurposed into a plethora of uses i.e. play room or snug, and the kitchen. The lounge features wooden flooring and sliding doors that open directly to the south westerly facing garden. The heart of the home is the large u-shaped kitchen to the rear, offering a range of wall and base units and looking out onto the garden. Finally to the downstairs is a handy WC. To the first floor are five generously sized bedrooms, many of which with built in wardrobes. Two of the bedrooms share a well appointed jack and jill ensuite, and the rest are serviced by the family bathroom, with a four piece suite including bath, basin, w.c., and separate shower. Externally, the property offers excellent off-road parking with two flagged driveways, one leading to the integral garage. The rear garden, private and secure, enjoys a sunny south-western aspect and features lawns and a flagged patio.

This property is available with NO ONWARD CHAIN, early viewings are advised to avoid disappointment.



# MORGAN H LEWIS



# MORGAN H LEWIS

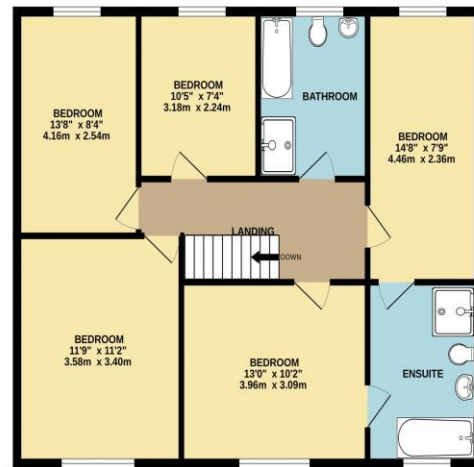


# MORGAN H LEWIS

GROUND FLOOR



1ST FLOOR



Whilst every attempt has been made to ensure the accuracy of the floorplan contained here, measurements of doors, windows, rooms and any other items are approximate and no responsibility is taken for any error, omission or mis-statement. This plan is for illustrative purposes only and should be used as such by any prospective purchaser. The services, systems and appliances shown have not been tested and no guarantee as to their operability or efficiency can be given.  
Made with Metropix ©2024