

 Barroque

**Greyhound Rd, N22 - £600,000**  
3 Bedroom Mid Terraced House



# Greyhound Rd | N17 6XR £600,000

## Charming Three-Bedroom Home Moments from Bruce Grove Station

Nestled in a popular and well-connected pocket of Tottenham, this spacious three-bedroom house is ideally located just a short walk from Bruce Grove Overground Station—offering swift links into Liverpool Street and Central London.

This well-proportioned property boasts a bright front reception room, a separate kitchen with space to dine, a practical utility room, and a private rear garden—ideal for summer gatherings or quiet enjoyment. Upstairs, the first floor comprises two generous double bedrooms, a single bedroom, and a family bathroom.

The house presents a fantastic opportunity for buyers seeking a home with potential. While well-maintained, it offers scope for modernisation or extension (subject to planning permission), making it an excellent long-term investment.

Set in a vibrant area, residents can enjoy nearby amenities including local shops, cafés, parks, and schools. The green spaces of Tottenham Marshes and Downhills Park are within easy reach, along with access to Seven Sisters and Tottenham Hale stations for Victoria Line and National Rail services.







 Barroque



 Barroque

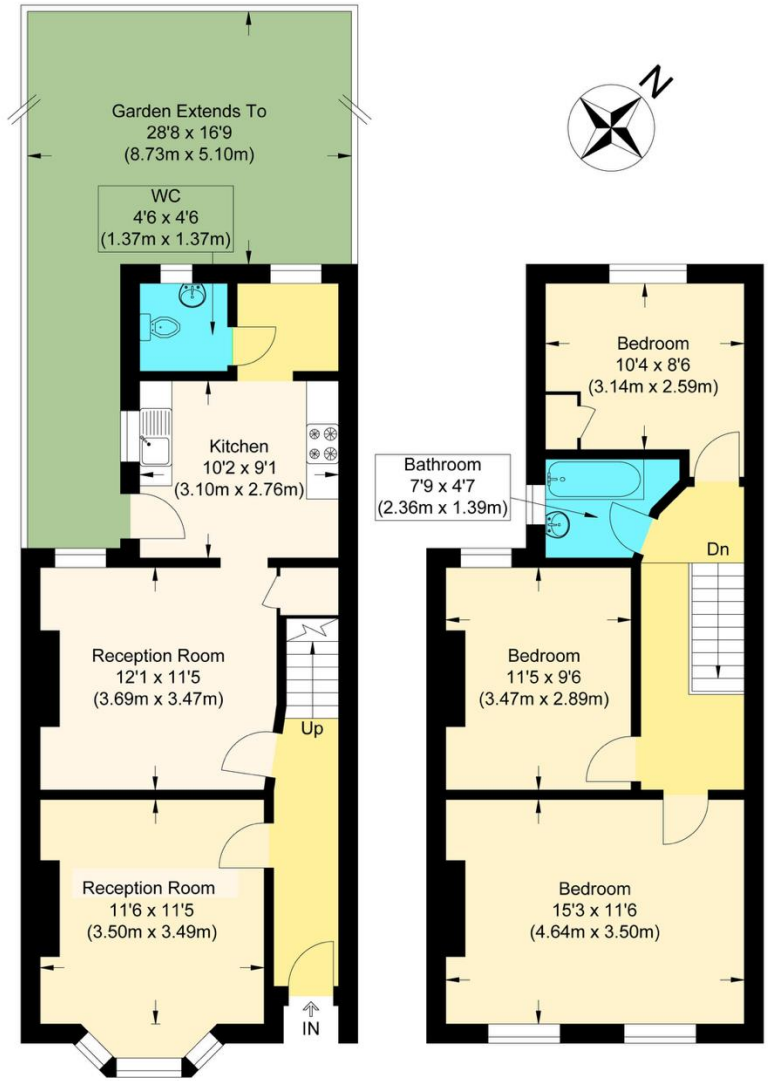
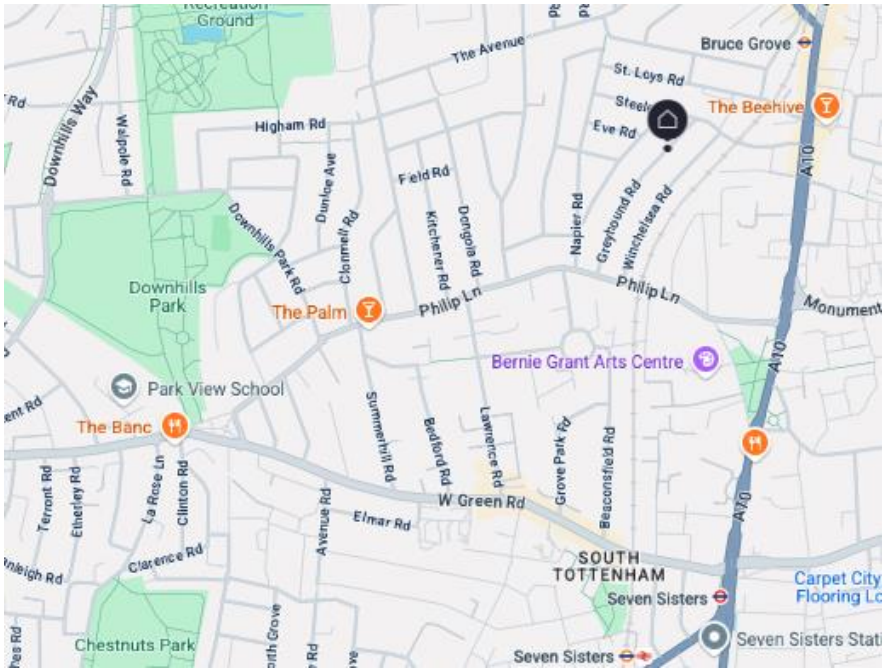


 Barroque



 Barroque

Score	Energy rating	Current	Potential
92+	<b>A</b>		
81-91	<b>B</b>		
69-80	<b>C</b>		<b>80 C</b>
55-68	<b>D</b>	<b>60 D</b>	
39-54	<b>E</b>		
21-38	<b>F</b>		
1-20	<b>G</b>		



Ground Floor

First Floor



**Greyhound Road**

Approximate Gross Internal Floor Area : 93.90 sq m / 1010.73 sq ft  
 Illustration for identification purposes only, measurements are approximate, not to scale.