

settle.



Chart Street
, London, N1 6DH
£5,995 Per month



C

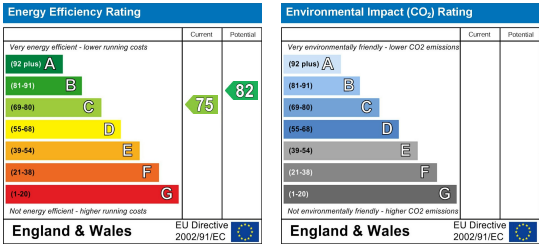
Floor Plan



Area Map



Energy Efficiency Graph



Viewing

Please contact our Settle Office on 0208 124 2522 if you wish to arrange a viewing appointment for this property or require further information.

- Immaculate Townhouse
- Split on Four Floors
- Six Bedroom House
- Two Bathroom and one WC
- Open Plan Kitchen-Living
- Available Now Area
- No Security Deposit Required
- EPC Rating C
- Council Tax Band F
- 1155 Sq Ft - 106 Sq M

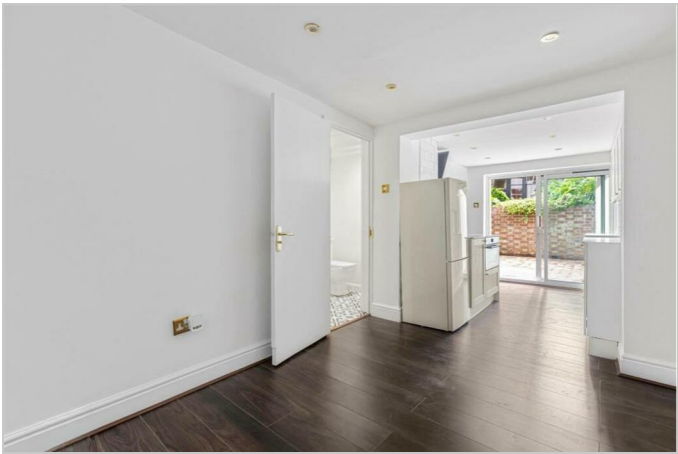


Beautifully Presented Six-Bedroom Townhouse with Private Garden and Spacious Kitchen-Diner

Offering approximately 1,155 sq ft (106 sq m) of well-designed living space, this impressive six-bedroom townhouse spans four floors and combines generous proportions with modern functionality — perfect for families or sharers seeking comfort and convenience.

The lower ground floor features a bright and spacious kitchen/dining room, ideal for entertaining or family gatherings, with direct access to a private garden — a peaceful outdoor retreat. This level also includes a utility area and guest WC. On the ground floor, you'll find two double bedrooms, both well-proportioned and versatile, suitable as guest rooms, home offices, or additional living space. The first floor offers two more bedrooms along with a modern family bathroom, providing ample accommodation for larger households. The second floor completes the layout with two generous bedrooms, each benefiting from plenty of natural light and built-in storage.

Suitable for Sharers!



These particulars, whilst believed to be accurate are set out as a general outline only for guidance and do not constitute any part of an offer or contract. Intending purchasers should not rely on them as statements of representation of fact, but must satisfy themselves by inspection or otherwise as to their accuracy. No person in this firm's employment has the authority to make or give any representation or warranty in respect of the property.