

# Settle.



Chatham Road

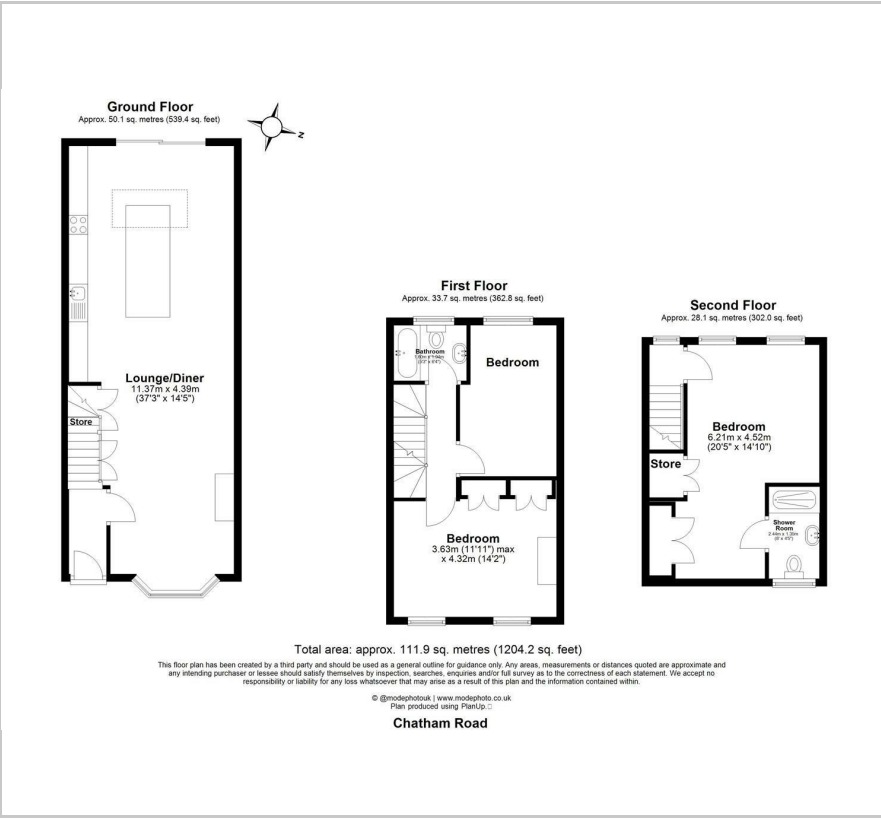
, London, E17 6EU

Offers in excess of £875,000





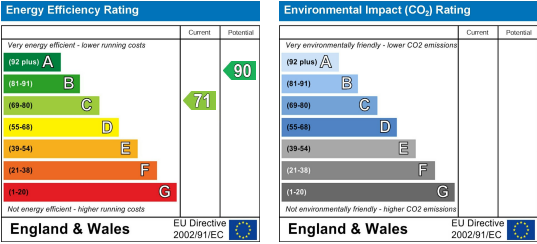
Floor Plan



Area Map



Energy Efficiency Graph



Viewing

Please contact our Settle Office on 0208 124 2522 if you wish to arrange a viewing appointment for this property or require further information.

- Beautifully Renovated Throughout
- Close Proximity To Lloyd Park
- Blackhorse Road Location
- Open Plan Ground Floor
- West Facing Rear Garden
- Three Bedrooms
- Converted Loft Room With En Suite
- No Onward Chain
- 0.3m To Blackhorse Road Station
- 1204 Sq Ft (111.9 SQ M)



A beautifully refurbished Victorian mid-terrace home, perfectly positioned between Lloyd Park and Blackhorse Road. Boasting an exposed brick frontage, a stylish tiled path leading to the front door, and striking dark grey double-glazed wooden sash windows, this property offers exceptional curb appeal. Inside, the ground floor has been transformed into a bright and airy open-plan living space, featuring elegant herringbone wooden flooring, a stunning feature fireplace, and clever under-stair storage. The brand-new kitchen is a true showpiece, complete with a central island, quartz worktops, integrated appliances, a gas hob, and an exposed brick feature wall. A large skylight lantern floods the space with natural light, while sleek sliding doors provide seamless access to the west-facing rear garden. The first floor offers two generously sized double bedrooms, including a front-facing room with built-in storage and an exposed brick fireplace. The stylish family bathroom is finished to an exceptional standard, featuring modern tiling, a freestanding bathtub, and premium fixtures. The loft conversion provides a stunning principal bedroom, complete with skylights, a Juliette balcony, built-in storage, and a luxurious en-suite shower room.



These particulars, whilst believed to be accurate are set out as a general outline only for guidance and do not constitute any part of an offer or contract. Intending purchasers should not rely on them as statements of representation of fact, but must satisfy themselves by inspection or otherwise as to their accuracy. No person in this firm's employment has the authority to make or give any representation or warranty in respect of the property.