



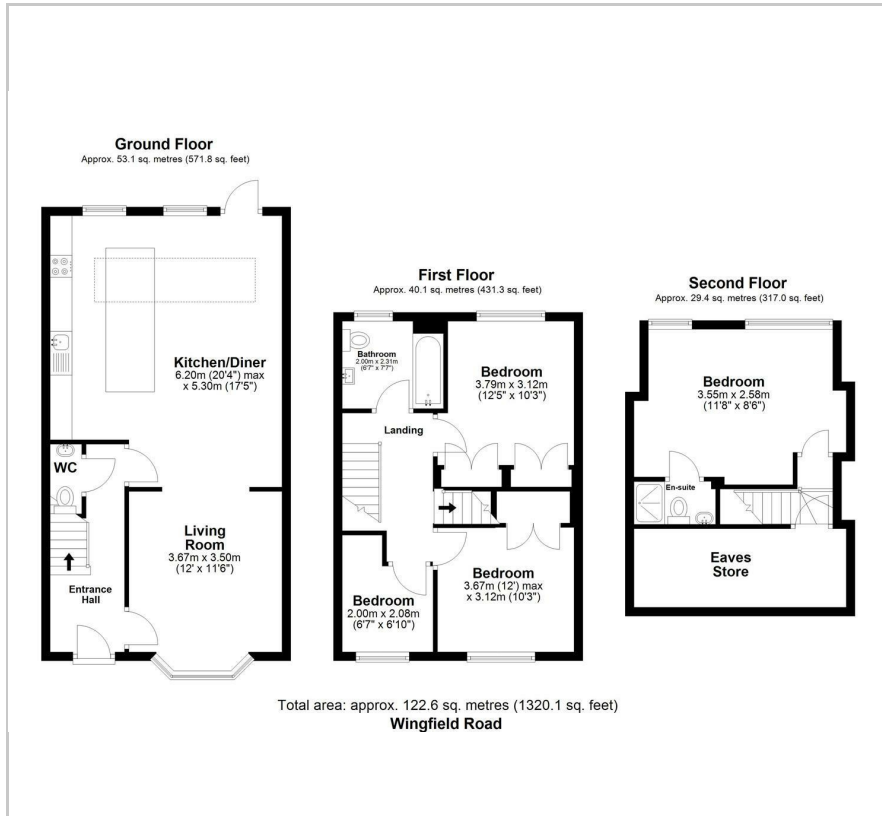
Wingfield Road

, London, E17 9NP

Offers in excess of £1,250,000



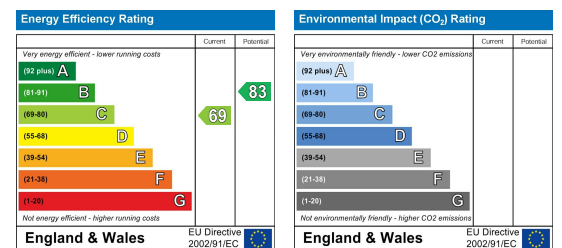
Floor Plan



Area Map



Energy Efficiency Graph



Viewing

Please contact our Settle Office on 0208 124 2522 if you wish to arrange a viewing appointment for this property or require further information.

- Walthamstow Village Location
- Open Plan Kitchen/Diner
- Parquet Flooring Throughout
- 0.4m To Walthamstow Central Station
- En Suite To Main Bedroom
- Close Proximity to Wingfield Park
- Large West Facing Rear Garden
- Beautifully Presented Throughout Ground Floor
- Semi Detached
- 1320 Sq Ft (122 SQ M)

A Stunning Architecturally Designed Semi-Detached House in Walthamstow Village. Step into a masterpiece of design and craftsmanship with this breath taking 1920s semi-detached four-bedroom house, set in the heart of Walthamstow Village. Meticulously renovated from top to bottom by the current owners, both of whom are architects, this home offers a perfect balance of stylish aesthetics, thoughtful design and practical living spaces, making it ideal for modern family life. As you enter, you are greeted by a bright and spacious hallway leading to a stylish front lounge, featuring an elegant circular bay window and stunning parquet flooring. The heart of the home is undoubtedly the impressive extended kitchen at the rear. Bathed in natural light from a large skylight, this space boasts a sleek and modern kitchen with an island, Corian and Lino worktops, integrated appliances, and beautiful parquet flooring throughout. The perfect spot for both entertaining and family life. Completing the ground floor is a convenient guest toilet. Upstairs on the first floor, you'll find three beautifully decorated bedrooms—two spacious doubles with built-in storage and a versatile smaller bedroom. All three rooms feature stylish painted wooden floors. The family bathroom is a tasteful and modern space, fully tiled. All the circulation spaces have natural light and ventilation, thanks to a window and skylight. The crowning jewel of this remarkable home is the expertly converted loft, now a luxurious principal suite. This light-filled retreat features large west-facing windows with views over the garden, painted wooden floors, and a chic en suite shower room with generous and accessible loft storage in the eaves. Finally step outside and discover a generously sized and beautifully maintained west-facing garden, offering a mix of patio and lawn space, ideal for summer gatherings and outdoor play. It even features a charming children's treehouse, making it a dream for families.



These particulars, whilst believed to be accurate are set out as a general outline only for guidance and do not constitute any part of an offer or contract. Intending purchasers should not rely on them as statements of representation of fact, but must satisfy themselves by inspection or otherwise as to their accuracy. No person in this firm's employment has the authority to make or give any representation or warranty in respect of the property.