

Settle.



Coleridge Road

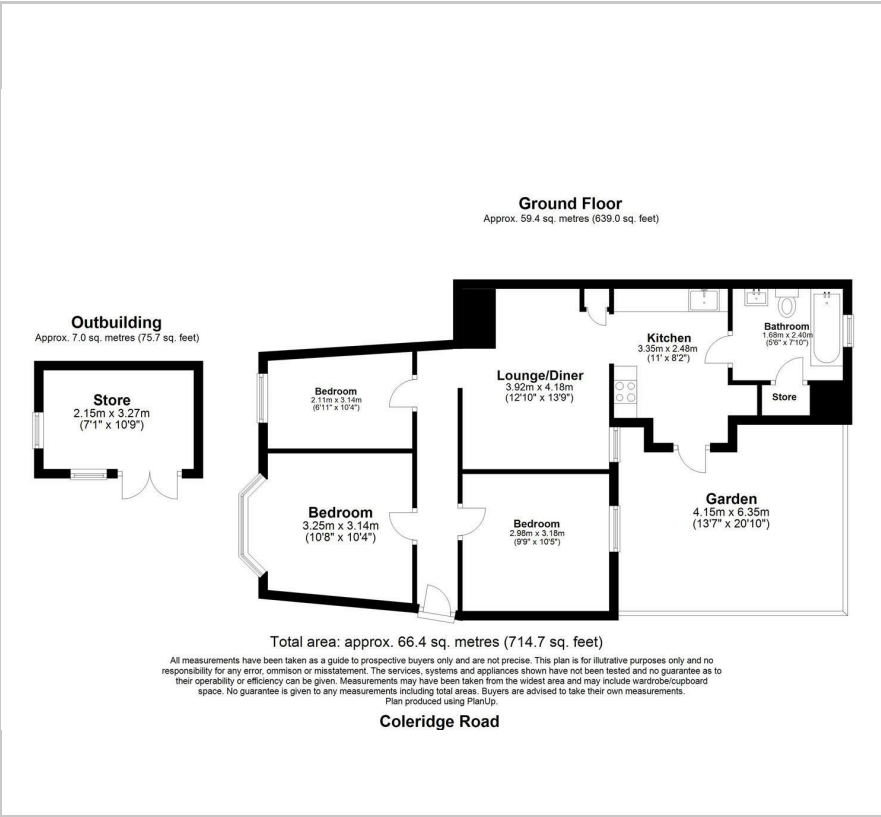
, London, E17 6QX

Offers in excess of £525,000



3 1 1 D

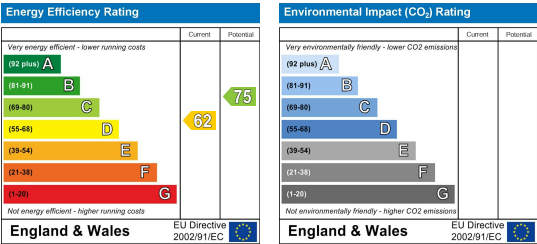
Floor Plan



Area Map



Energy Efficiency Graph



Viewing

Please contact our Settle Office on 0208 124 2522 if you wish to arrange a viewing appointment for this property or require further information.



A beautifully presented three-bedroom ground floor flat with private garden in central Walthamstow.

Situated on the ground floor of this charming Victorian end-of-terrace building, this three-bedroom flat offers a fantastic balance of character and practicality with a thoughtfully designed layout, stylish interiors, and a private garden with a versatile outbuilding.

The property features beautiful wooden flooring throughout with the main bedroom benefitting from a stunning bay window with wooden shutters, adding charm and natural light. There are three bedrooms in total with the smaller third room making an ideal study, nursery, or walk-in wardrobe. The bright and airy lounge/dining space is the perfect place to kick back and relax which leads into a sleek integrated kitchen, complete with white base and eye-level units, providing direct access to the private rear garden. To the rear is a stylishly tiled family bathroom.

The low-maintenance garden benefits from artificial grass and a versatile outbuilding/summerhouse, perfect for a home office, gym, or additional storage with the added benefit of side access from the street.



These particulars, whilst believed to be accurate are set out as a general outline only for guidance and do not constitute any part of an offer or contract. Intending purchasers should not rely on them as statements of representation of fact, but must satisfy themselves by inspection or otherwise as to their accuracy. No person in this firm's employment has the authority to make or give any representation or warranty in respect of the property.

187 Hoe Street, Walthamstow, London, E17 3AP
Tel: 0208 124 2522 Email: info@settleeast.co.uk