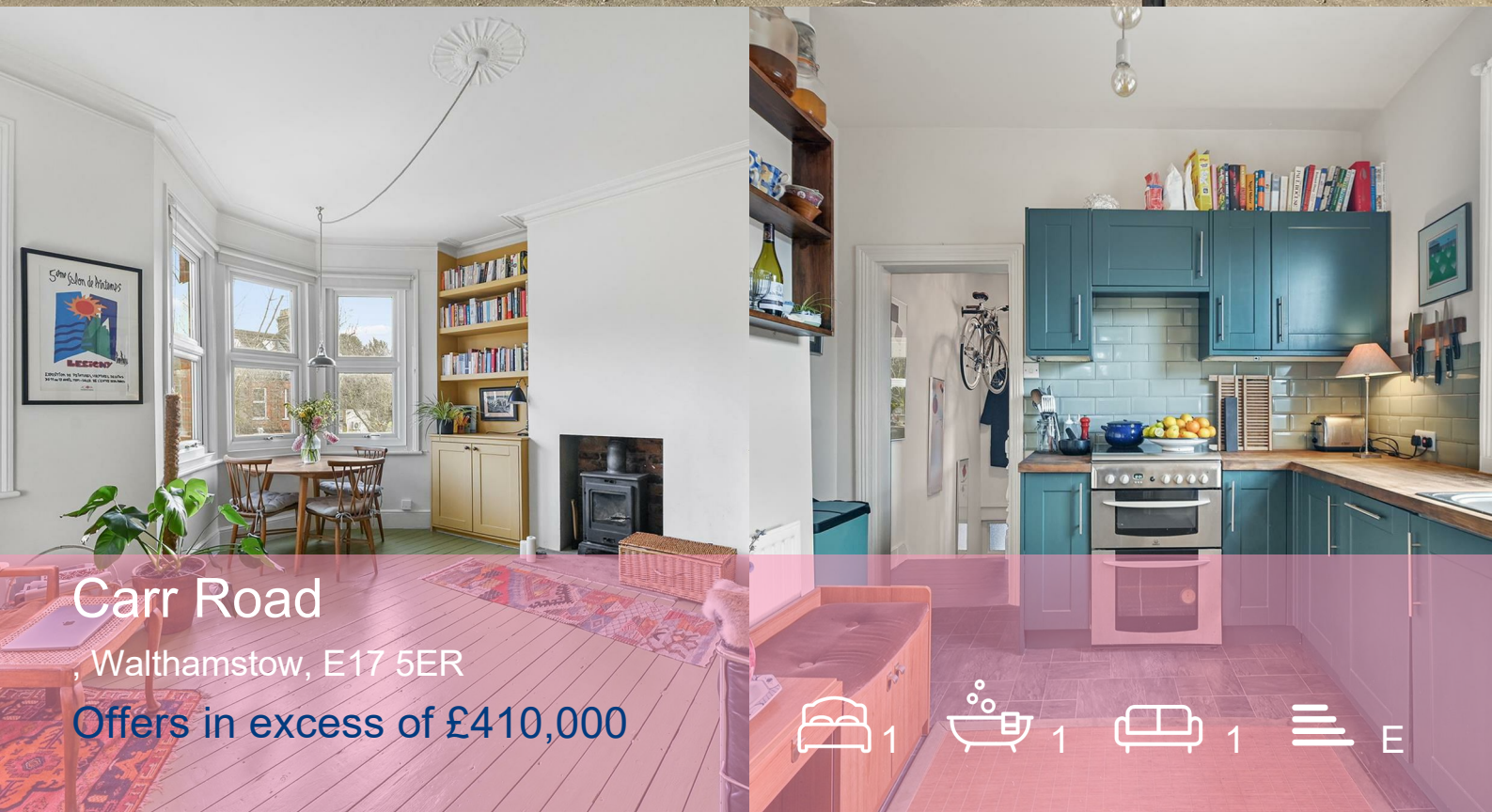


settle.



Carr Road

, Walthamstow, E17 5ER

Offers in excess of £410,000



1



1



1



E

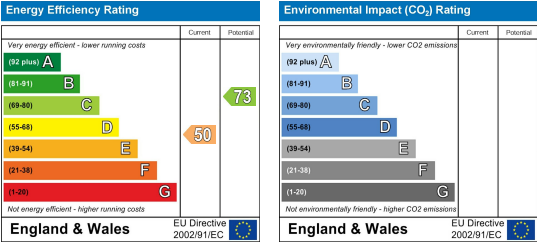
Floor Plan



Area Map



Energy Efficiency Graph



Viewing

Please contact our Settle Office on 0208 124 2522 if you wish to arrange a viewing appointment for this property or require further information.

- Warner Built Property
- First Floor Flat
- Leasehold
- Planning Permission Previously Granted For Loft
- Shared Rear Garden
- End Of Terrace
- Lloyd Park Location
- Beautifully Presented
- 0.7 miles to Walthamstow Central
- 551 Sq Ft (51.1 SQ M)

A classic and beautifully presented Warner flat located in the much desired surroundings of Lloyd Park. This beautiful first floor residence is set on one of the most popular streets near Lloyd Park with all the charm and character you should expect from a Warner flat. The spacious, bay fronted lounge to the front has an incredibly welcoming vibe with original wooden floors, bespoke built-in storage and a working wood burner. Adjacent to this room is the main principal bedroom, again with original wooden floors, built-in storage and tasteful décor. The L-shaped Kitchen features dark green units with wooden work surfaces, metro tiles and plenty of storage whilst the bathroom to the rear, separated by a small landing space, is equally as well finished with white metro tiles, shower over bath and even more storage. It is this very landing space that you will find access down to the shared rear garden. With a mixture of patio, lawn and planters as well as a favourable west-facing aspect, it is the perfect place to sit back, relax and enjoy the evening sun.



These particulars, whilst believed to be accurate are set out as a general outline only for guidance and do not constitute any part of an offer or contract. Intending purchasers should not rely on them as statements of representation of fact, but must satisfy themselves by inspection or otherwise as to their accuracy. No person in this firms employment has the authority to make or give any representation or warranty in respect of the property.