



Falmer Road
London, E17 3BH

Offers in excess of £875,000



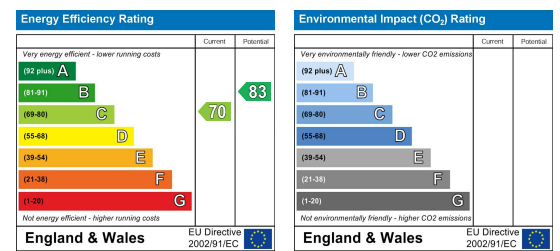
Floor Plan



Area Map



Energy Efficiency Graph

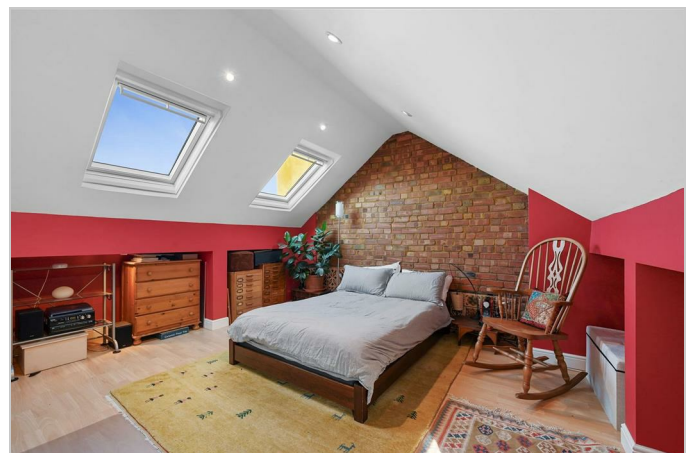


Viewing

Please contact our Settle Office on 0208 124 2522 if you wish to arrange a viewing appointment for this property or require further information.

- Four Bedroom House
- Converted Loft Room
- Close Proximity To Lloyd Park
- West Facing Rear Garden
- Walking Distance To Walthamstow Village
- Mid Terrace Victorian House
- Central Walthamstow Location
- Spacious Kitchen/Diner
- 0.4m To Walthamstow Central
- 1,205 sq ft (112 sq m)

A spacious family home in a popular central Walthamstow location. This fantastic four bedroom, mid terrace house is a classic Victorian design that boasts a wealth of original features and is ideally located in a very central location. The front of the property has a classy Victorian look with its large bay windows and black and white mosaic tiles running underfoot in the front garden. You enter the property via the stained glass front door with the ground floor accommodating a generous reception room which is flooded with natural light. The kitchen is located to the rear and offers ample space for dining and entertaining friends and family. Upstairs the four bedrooms are set across the two floors with the first floor featuring two doubles and a single, together with a three piece family shower room. The top floor houses an additional loft room. Outside is an impressive private rear garden with a mixture of mature trees, plants and a patio area situated to the front.



These particulars, whilst believed to be accurate are set out as a general outline only for guidance and do not constitute any part of an offer or contract. Intending purchasers should not rely on them as statements of representation of fact, but must satisfy themselves by inspection or otherwise as to their accuracy. No person in this firm's employment has the authority to make or give any representation or warranty in respect of the property.