



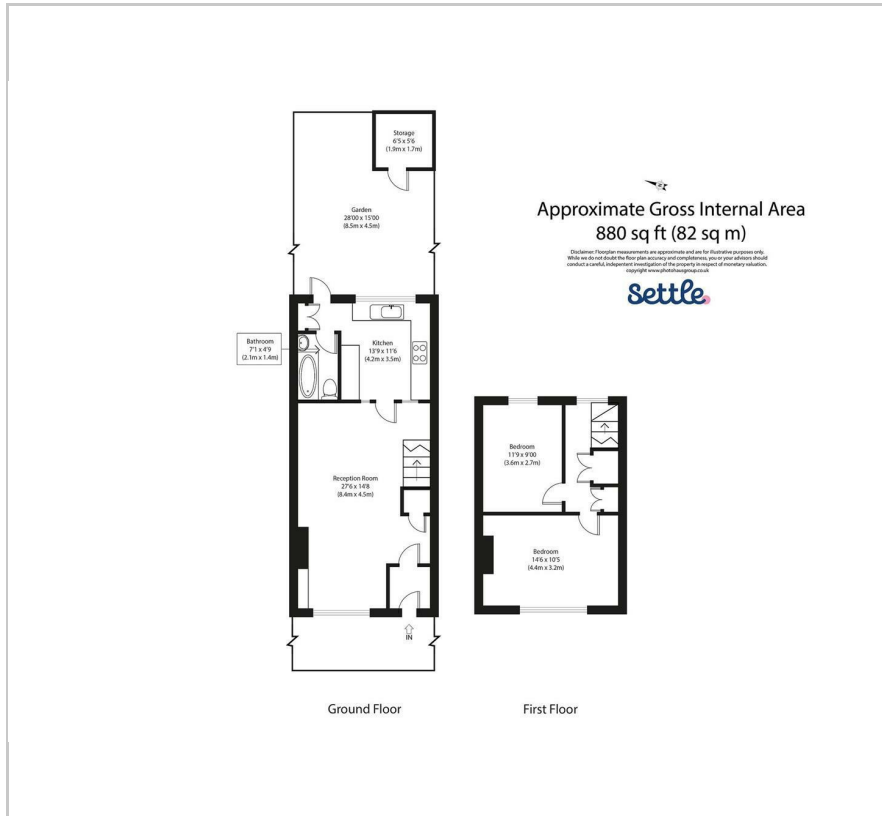
Acacia Road

, London, E17 8BW

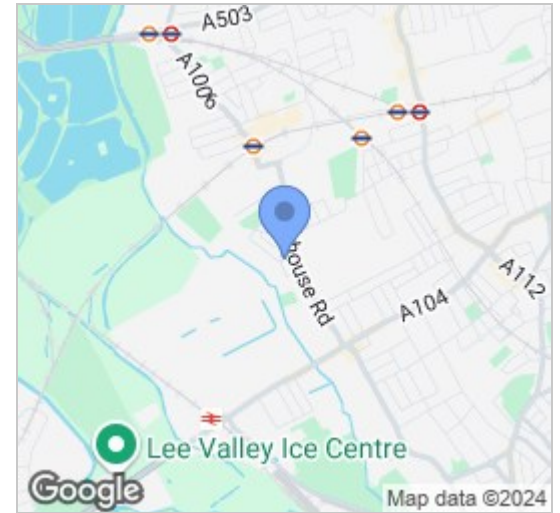
Offers in excess of £600,000



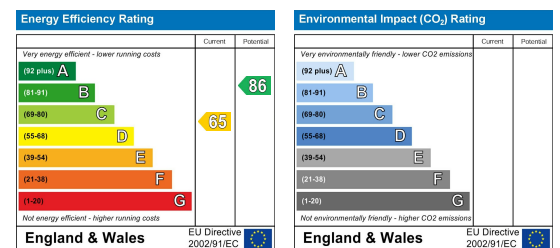
Floor Plan



Area Map



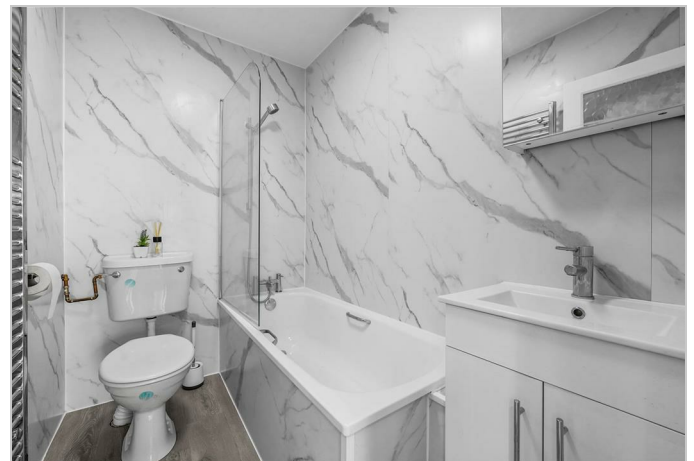
Energy Efficiency Graph



Viewing

Please contact our Settle Office on 0208 124 2522 if you wish to arrange a viewing appointment for this property or require further information.

- Two Bedrooms
- No Onward Chain
- St James Street Location
- Spacious Living Area
- 0.4m To St James Street Station
- Mid Terrace Victorian House
- Good Condition Throughout
- Potential To Extend (STPP)
- Large Private Rear Garden



A recently modernised terraced home near to St. James Street and Markhouse Road with bags of potential. This attractive home is currently set up with two bedrooms but has all the key ingredients to be transformed into a beautiful family home with untapped potential. There is excellent opportunity to extend STPP and the general good condition with neutral décor provides a blank canvas for your imagination to soar. Step inside to discover a layout designed for comfortable living, with generous room sizes and plenty of natural light streaming through large windows. The heart of the home is stunning living room which provides ample space for dining and entertaining friends and family. The kitchen, though functional, eagerly awaits your personal touch to transform it into a culinary haven. Venture outside to explore the expansive garden, a lush retreat to enjoy those long summer evenings. The garden includes artificial grass with shrubbery either side.



These particulars, whilst believed to be accurate are set out as a general outline only for guidance and do not constitute any part of an offer or contract. Intending purchasers should not rely on them as statements of representation of fact, but must satisfy themselves by inspection or otherwise as to their accuracy. No person in this firm's employment has the authority to make or give any representation or warranty in respect of the property.