

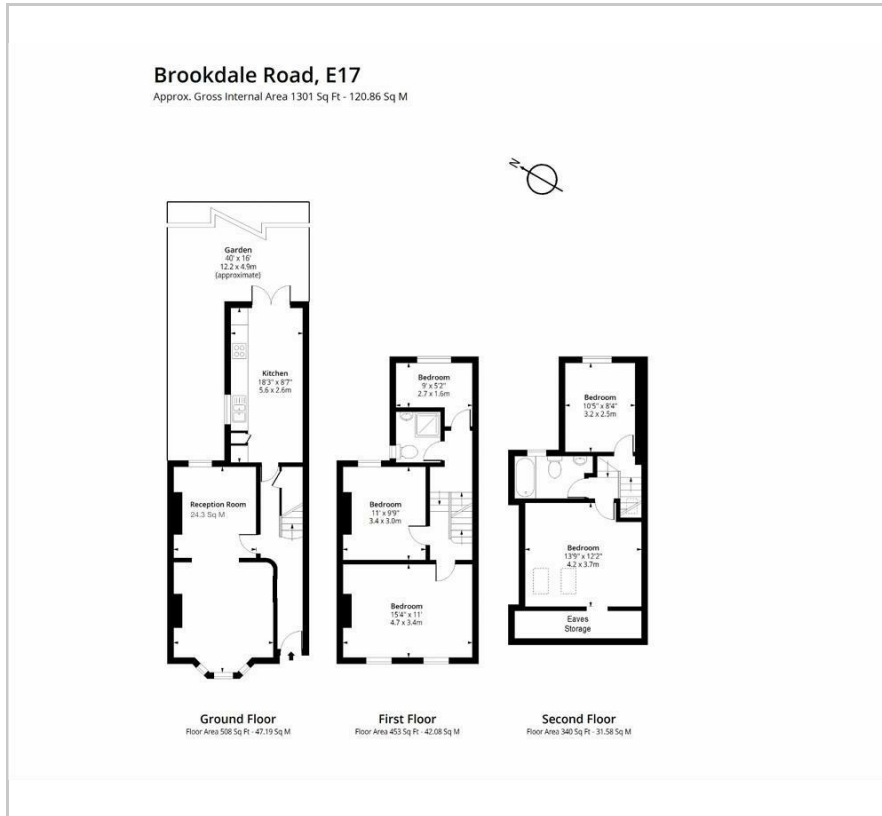


Brookdale Road

, London, E17 6QL

£3,395 Per month

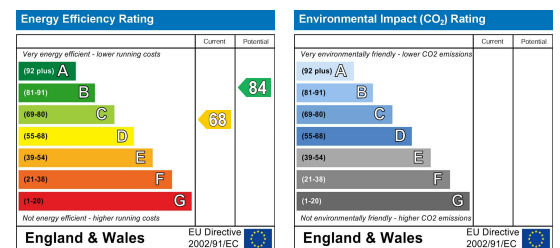
## Floor Plan



## Area Map



## Energy Efficiency Graph



## Viewing

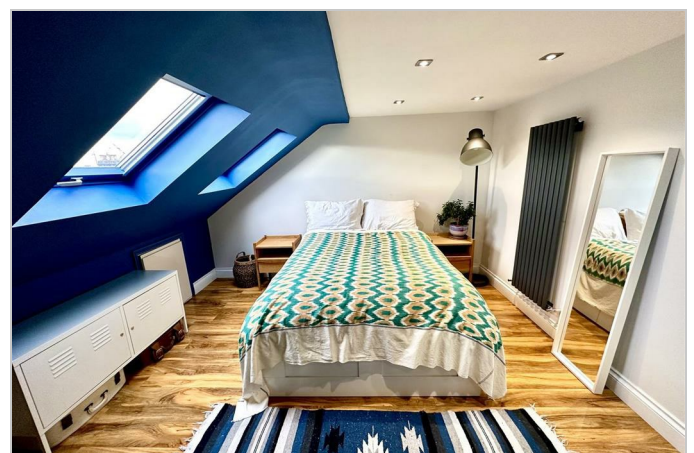
Please contact our Settle Office on 0208 124 2522 if you wish to arrange a viewing appointment for this property or require further information.

- Mid Terraced Family Home
- Additional Study Room
- Spacious Living Area with Separate Kitchen
- Available Mid November
- Council Tax Band C
- Four Generously Sized Bedrooms
- Loft Converted and Well Presented Throughout
- Private Landscaped Rear Garden
- EPC Rating D
- 1301 Sq Ft - 120.86 Sq M

Tastefully Decorated and Well Maintained Mid-Terraced Victorian Family Home.

This charming four-bedroom home spans three well-designed floors, offering ample space and versatility. The ground floor features a spacious through lounge, perfect for family gatherings or entertaining, while a separate, fully fitted kitchen provides plenty of storage and modern appliances, ideal for daily meal preparation. An additional room, perfectly suited as a home office or study, adds further convenience. The first floor houses a full shower room along with two of the bedrooms, while the top floor boasts another bathroom and two more bedrooms, offering privacy and flexibility for family members or guests.

Note: Due to Property Licensing restrictions with Waltham Forest Council we can only accept a maximum of two households for this property.



These particulars, whilst believed to be accurate are set out as a general outline only for guidance and do not constitute any part of an offer or contract. Intending purchasers should not rely on them as statements of representation of fact, but must satisfy themselves by inspection or otherwise as to their accuracy. No person in this firm's employment has the authority to make or give any representation or warranty in respect of the property.

187 Hoe Street, Walthamstow, London, E17 3AP  
Tel: 0208 124 2522 Email: info@settleeast.co.uk