



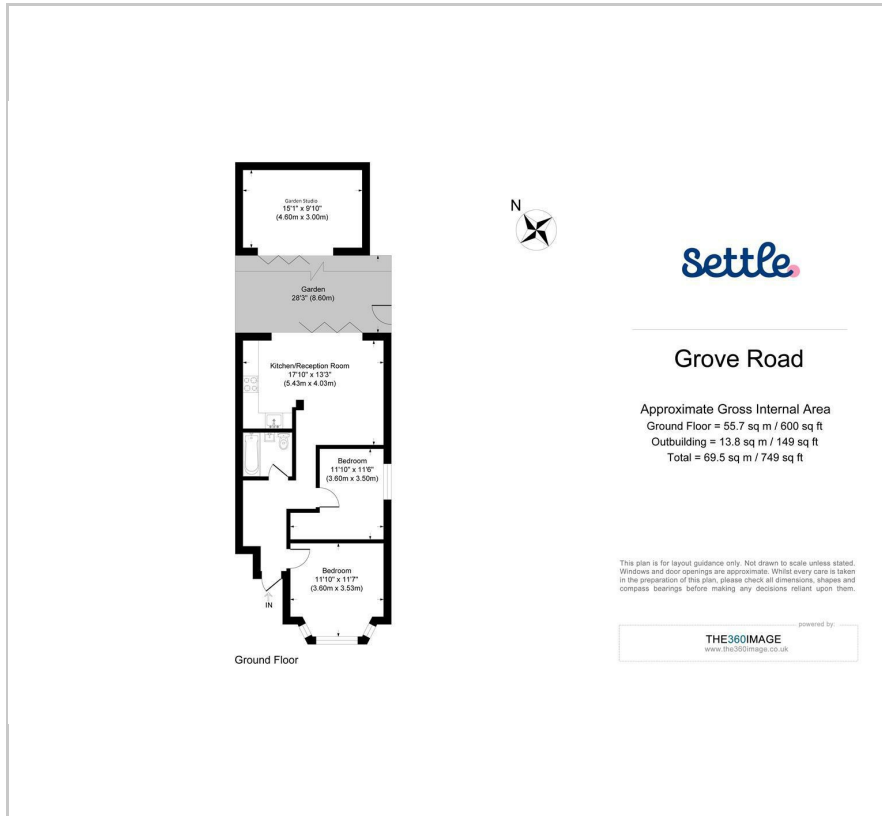
Grove Road

, London, E17 9BZ

Offers in excess of £510,000



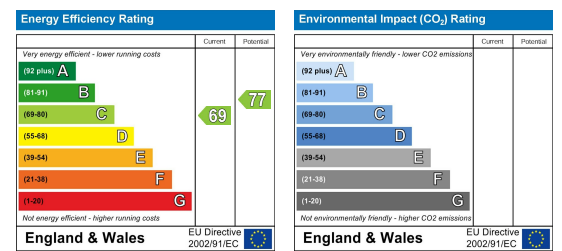
Floor Plan



Area Map



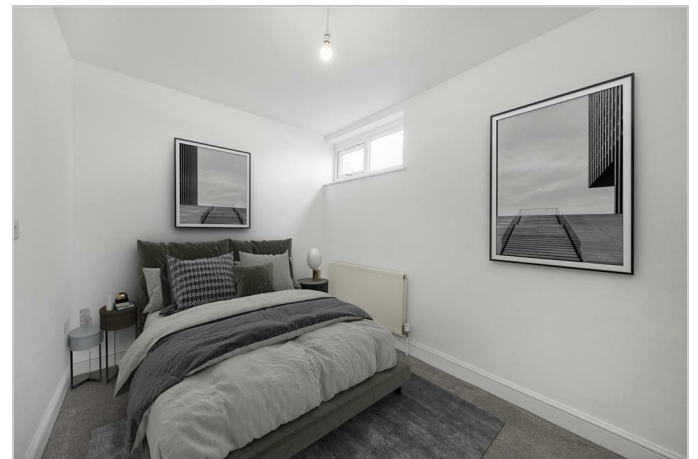
Energy Efficiency Graph



Viewing

Please contact our Settle Office on 0208 124 2522 if you wish to arrange a viewing appointment for this property or require further information.

- Walthamstow Village Borders
- Two Bedrooms
- Ground Floor
- 0.6m To Walthamstow Central
- No Onward Chain
- Spacious Living Area
- Well Presented Throughout
- 0.5m To Wood Street Station
- Private Rear Garden
- 749 Sq Ft (69.5 SQ M)



A superb ground floor garden flat on the borders of Walthamstow Village. This wonderful ground floor flat is the perfect first time purchase with no onward chain and is ideally located just a short stroll from Walthamstow Village. As you enter this attractive 1930's home you will immediately discover two generously sized bedrooms to the front, both comfortable double rooms with the front boasting a large bay that floods the room with light. Journey further on and you will find the beautifully presented family bathroom complete with a modern three-piece bathroom suite and luxurious rainfall shower.

To the rear is the open plan living and dining area that is also bathed in natural light, creating a warm and inviting atmosphere. The living area seamlessly connects to the sumptuous private rear garden through large sliding doors, making it the perfect space for entertaining or simply enjoying a quiet evening in. This fantastic social space also plays host to a contemporary kitchen that is well-equipped with top-of-the-line integrated appliances, ample storage, and plenty of work surface space. Finally, step outside and take in the delightful private rear garden complete with a brand new garden studio. This is your very own green space in the heart of East London perfectly suited for some gardening, outdoor dining, or just relaxing with friends and family. The studio stretches an impressive 15ft in width and would make the perfect home office or gym.



These particulars, whilst believed to be accurate are set out as a general outline only for guidance and do not constitute any part of an offer or contract. Intending purchasers should not rely on them as statements of representation of fact, but must satisfy themselves by inspection or otherwise as to their accuracy. No person in this firm's employment has the authority to make or give any representation or warranty in respect of the property.