



Hurst Road

, London, E17 3BL

Offers in excess of £775,000

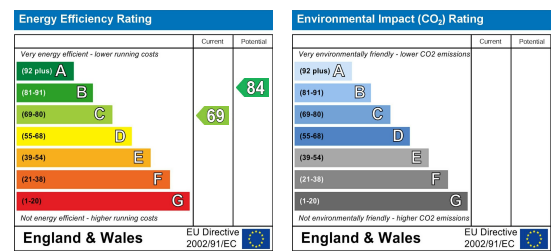
Floor Plan



Area Map



Energy Efficiency Graph



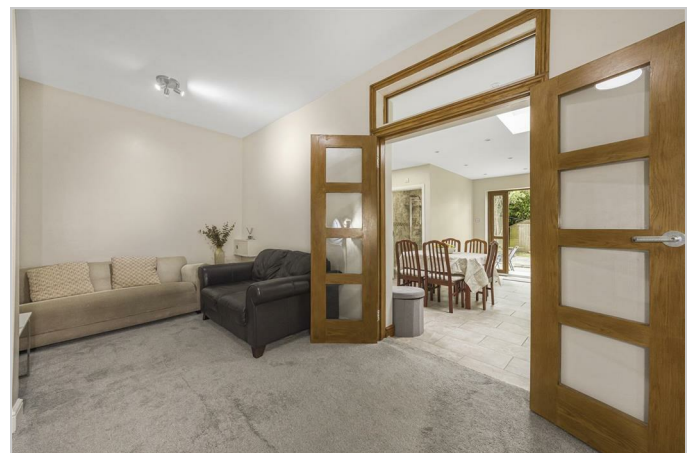
Viewing

Please contact our Settle Office on 0208 124 2522 if you wish to arrange a viewing appointment for this property or require further information.

- 1930's Family Home
- Five Bedrooms
- Extended Ground Floor
- Large Rear Garden
- 0.5m To Walthamstow Central Station
- End Of Terrace
- Loft Conversion
- Popular Hilltop Location
- Close Proximity To Lloyd Park
- 1369 Sq Ft (127.2 SQ M)



A 1930's end of terraced home perfectly positioned in the popular hilltop location of Walthamstow. This delightful property boasts two reception rooms, five bedrooms, a skylit kitchen and a large rear garden, making it an ideal home for a growing family. As you step inside, you'll immediately notice the spacious interior spanning nearly 130 Sq M in size, offering ample space for comfortable living. The extended kitchen diner to the rear is perfect for hosting family gatherings and entertaining guests with the added convenience of a ground floor bathroom whilst the bay fronted lounge to the front is the ideal spot to kick back and relax. The first floor offers the traditional 1930's layout with two large bedrooms and a smaller single room as well as the family bathroom suite. The loft conversion adds a touch of versatility and even more space, with two additional bedrooms that can be used as guest rooms, home offices, or playrooms, catering to the needs of a modern family. One of the highlights of this property is the large rear garden, stretching over 50 feet in length with a much sought after west facing aspect. This wonderful outdoor space should catch plenty of afternoon sun creating an excellent environment for children to play in or for adults to relax and unwind in the evening.



These particulars, whilst believed to be accurate are set out as a general outline only for guidance and do not constitute any part of an offer or contract. Intending purchasers should not rely on them as statements of representation of fact, but must satisfy themselves by inspection or otherwise as to their accuracy. No person in this firm's employment has the authority to make or give any representation or warranty in respect of the property.