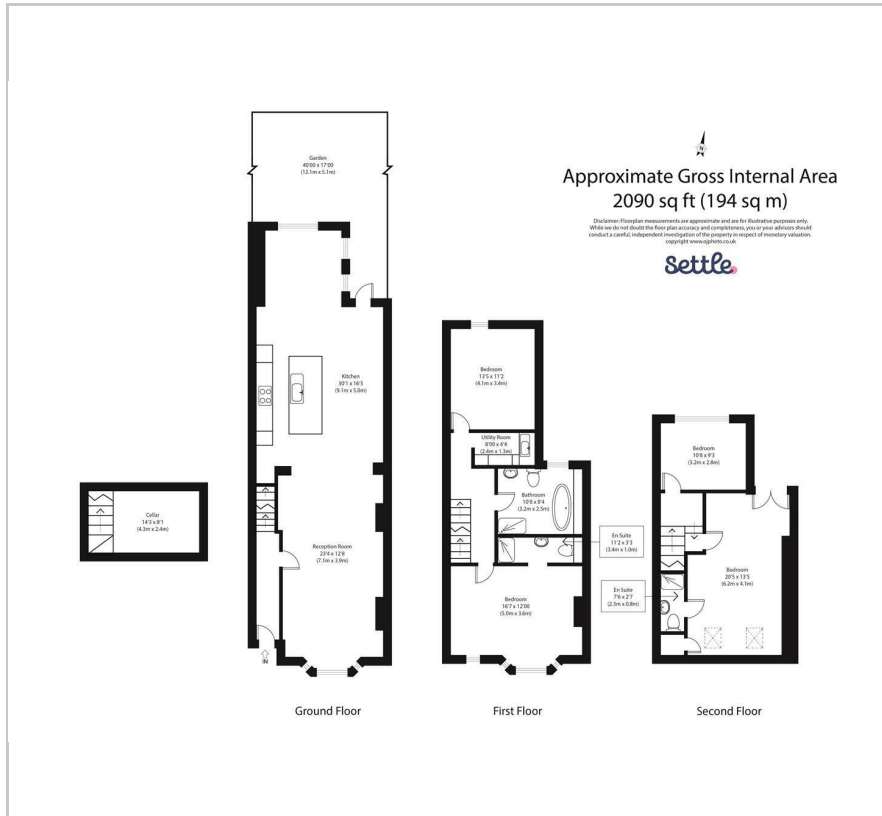




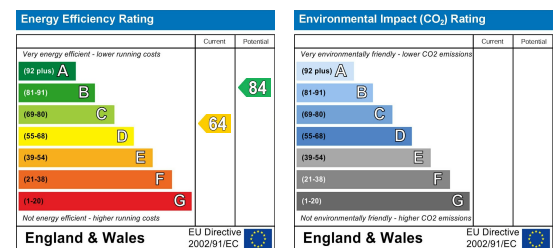
Floor Plan



Area Map



Energy Efficiency Graph



Viewing

Please contact our Settle Office on 0208 124 2522 if you wish to arrange a viewing appointment for this property or require further information.

- Guide Price: £1,500,000-£1,700,000
- Converted Basement Room
- Open Plan Layout
- No Onward Chain
- 0.3m To Walthamstow Central Station
- Victorian End Of Terrace House
- Beautifully Renovated Throughout
- Central Walthamstow Location
- Loft Conversion And Large Kitchen Extension
- 2090 Sq Ft (194 SQ M)



Guide Price: £1,500,000-£1,700,000.

A meticulously renovated end-of-terrace Victorian home spanning more than 2,000 sq ft in size. Nestled in a coveted central Walthamstow location, this rare gem boasts an expansive layout and bespoke design features throughout that you will certainly not want to miss.

The exterior facade showcases the timeless allure of exposed brick, reminiscent of the property's Victorian heritage.

Upon entry, get ready to be blown away by the grand open-plan design which has been thoughtfully crafted to offer a seamless flow and an abundance of natural light and space. The high-end finishes, stunning period features and architectural nuances create an atmosphere of sophistication and comfort, ideal for both daily living and entertaining.

The heart of this beautiful home, where culinary mastery meets architectural splendor, is undoubtedly the open-plan kitchen and dining space with its captivating blend of innovative design and luxurious functionality.

The architectural drama continues as you notice the soaring skylights bathing the room in natural light and the large arch-topped windows, framing picturesque views of the landscaped garden. Underfoot, the rustic charm of brick flooring adds character and texture whilst the walls, adorned with micro cement, exude modern sophistication.

The kitchen itself is a masterpiece of design and functionality, boasting high-end finishes and meticulous attention to detail with impressive Quartz worktops, integrated appliances and a large island that takes centre



These particulars, whilst believed to be accurate are set out as a general outline only for guidance and do not constitute any part of an offer or contract. Intending purchasers should not rely on them as statements of representation of fact, but must satisfy themselves by inspection or otherwise as to their accuracy. No person in this firm's employment has the authority to make or give any representation or warranty in respect of the property.

187 Hoe Street, Walthamstow, London, E17 3AP
Tel: 0208 124 2522 Email: info@settleast.co.uk