



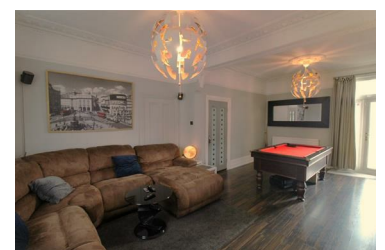
41 Milton Avenue, London, E6 1BG

£635,000



This five bedroom end of terrace Victorian home oozes character and charm throughout. Benefitting from four double bedrooms and two spacious reception rooms this is the complete family home. East Ham station is within a three minute walk giving access to the District and Hammersmith and City Lines. Further potential can be unearthed by extending to the rear and loft space (STPP). A driveway for one car completes this charming home.

The ground floor of the property comprises of a spacious entrance hall giving access to the first reception room. This reception room is certainly the heart of this family home and offers ample space for dining and entertaining guests. To the rear the second reception room offers more dining space and due to the locality next to the kitchen would be ideal to open the two rooms into one giving you a large kitchen diner. The second reception room also includes a bay window to the side which floods the room with natural light and offers more usable space.



- Five Bedrooms
- Shower Room & Ground Floor WC
- Driveway
- Within a Three Minute Walk To East Ham Station
- End Of terrace House
- Two Reception Rooms
- Potential to Extend Into The Rear & Loft (STPP)
- 1313 Sq Ft (122 SQ M)