



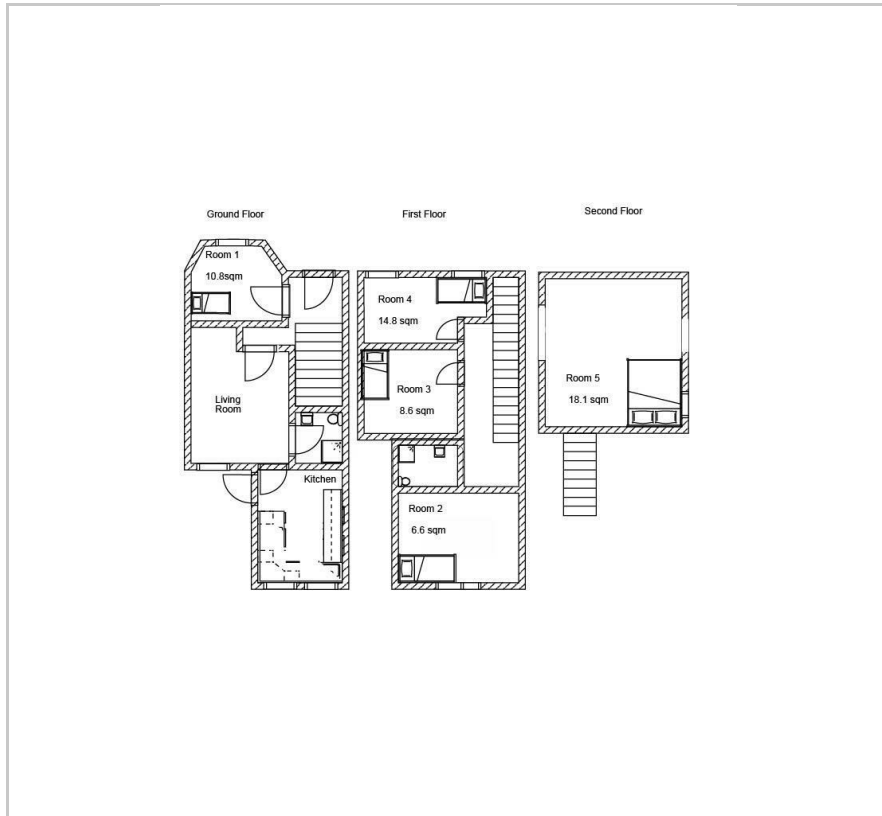
Sidmouth Road

, London, E10 5QZ

£600,000

 5  2  2  C

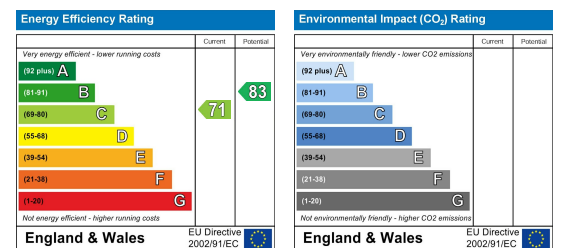
Floor Plan



Area Map



Energy Efficiency Graph



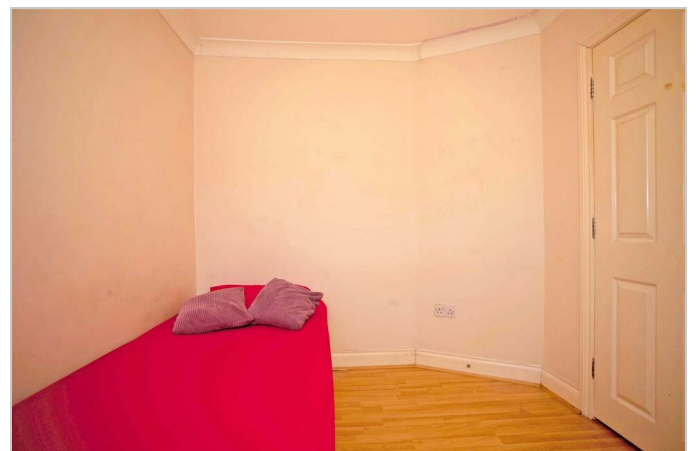
Viewing

Please contact our Settle Office on 0208 124 2522 if you wish to arrange a viewing appointment for this property or require further information.

- Central Leyton Location
- HMO Property
- Excellent Investment
- Close Proximity To Leyton High Road
- 0.3 m To Leyton Underground Station
- 1011.81 (94 SQ M)



Welcome to an exciting investment opportunity! This spacious and well-located HMO (house of multiple occupancy) awaits your creative touch to unlock its full potential. With five bedrooms, a communal area, and a fantastic location, this property is a blank canvas for a savvy buyer with an eye for modernisation. Take advantage of its prime position, close to amenities and transportation, to create a sought-after living space for professionals and students alike. There is fantastic potential to reimagine this HMO house into a stylish and comfortable family home or keep as is to benefit from lucrative returns and a rewarding investment.



These particulars, whilst believed to be accurate are set out as a general outline only for guidance and do not constitute any part of an offer or contract. Intending purchasers should not rely on them as statements of representation of fact, but must satisfy themselves by inspection or otherwise as to their accuracy. No person in this firm's employment has the authority to make or give any representation or warranty in respect of the property.