

Floor Plan



BRICKS.  
ESTATE AGENTS



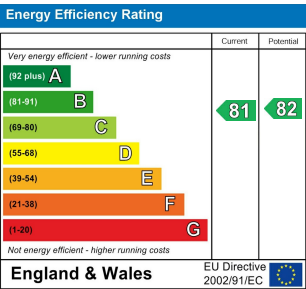
BRICKS.  
ESTATE AGENTS

£500,000

These particulars, whilst believed to be accurate are set out as a general outline only for guidance and do not constitute any part of an offer or contract. Intending purchasers should not rely on them as statements of representation of fact, but must satisfy themselves by inspection or otherwise as to their accuracy. No person in this firms employment has the authority to make or give any representation or warranty in respect of the property.

Contact Us

- 0203 634 9998
- hello@bricksestateagents.co.uk
- Crate 9 15 Oakwood Hill Industrial Estate, Loughton, Essex, IG10 3TZ



Flat 6, Bradfield House The Boulevard,  
Woodford Green, IG8 8GR

Bricks Estate Agents are delighted to present this immaculately presented two-bedroom, two-bathroom apartment in the highly sought-after gated development of Repton Park. Offering a perfect blend of elegance, space, and modern comfort, this exceptional home is ideal for those seeking a peaceful retreat in a prime location.

# Flat 6, Bradfield House The Boulevard, Woodford Green, IG8 8GR

2 2 1 B

- Guide Price \*£500,000 - £525,000\*
- Two Double Bedrooms & Two Bathrooms
- Oozing With Natural Light Throughout
- 24-Hour Gated Security
- Service Charge - £6,840 Per Annum | Ground Rent - £140.00 Per Annum
- Situated In The Highly Sought-After Development Of Repton Park
- Access To A Gym And Lots Of Amenities
- 200 Acres Of Private Parkland
- Two Allocated Underground Car Parking Spaces
- Council Tax - Band F | Lease - 973 Years Remaining

Entrance Hall  
6'6" x 5'5" (2.00m x 1.67m)

Lounge/Diner  
16'6" x 17'9" (5.05m x 5.42m)

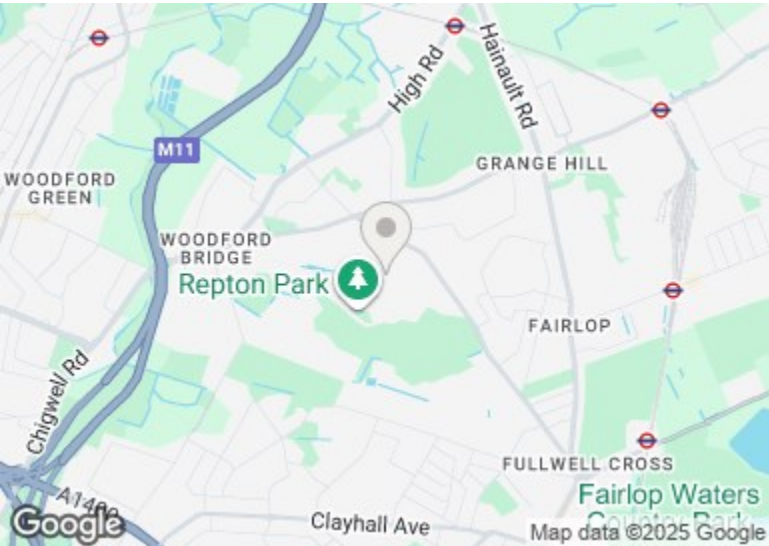
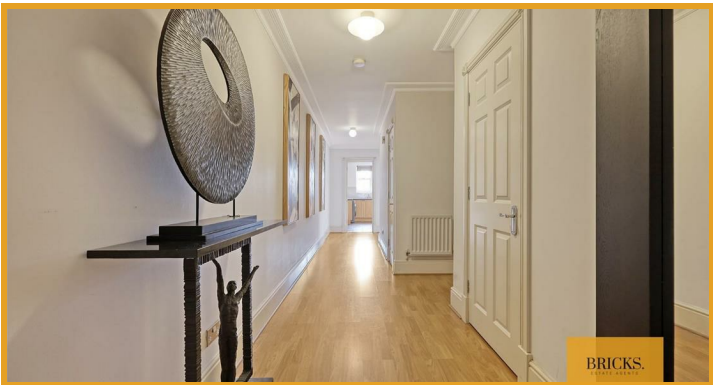
Kitchen  
13'10" x 9'11" (4.22m x 3.04m)

Main Bedroom  
15'7" x 17'10" (4.75m x 5.45m )

En-Suite  
6'3" x 12'4" (1.91m x 3.77m)

Bedroom Two  
13'1" x 15'0" (4.00m x 4.58m)

Bathroom  
8'11" x 8'11" (2.72m x 2.72m)



Directions

BRICKS.  
ESTATE AGENTS