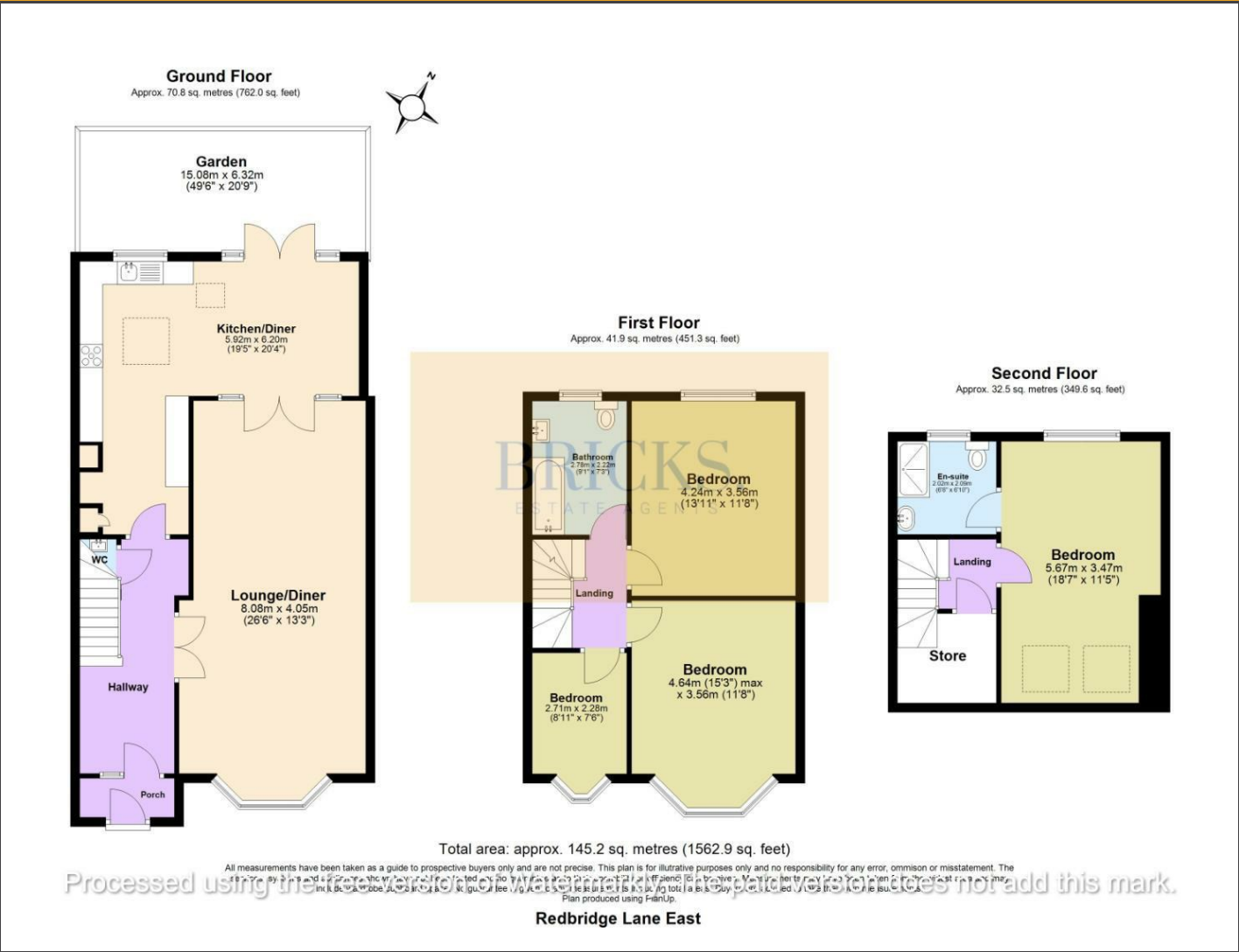


Floor Plan

BRICKS.  
ESTATE AGENTS



BRICKS.  
ESTATE AGENTS

£675,000

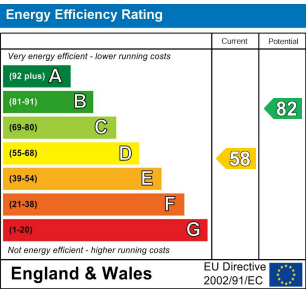
These particulars, whilst believed to be accurate are set out as a general outline only for guidance and do not constitute any part of an offer or contract. Intending purchasers should not rely on them as statements of representation of fact, but must satisfy themselves by inspection or otherwise as to their accuracy. No person in this firms employment has the authority to make or give any representation or warranty in respect of the property.

128 Redbridge Lane East,  
Ilford, IG4 5BU

Bricks Estate Agents is thrilled to showcase this magnificent 4 bedroom extended terraced home, perfectly situated on the highly sought after Redbridge Lane East in Ilford. With off-road parking and an eye catching façade, this property is a true standout in the neighborhood.

Contact Us

- 0203 634 9998
- hello@bricksestateagents.co.uk
- Crate 9 15 Oakwood Hill Industrial Estate, Loughton, Essex, IG10 3TZ





# 128 Redbridge Lane East, Ilford, IG4 5BU

4 2 2 D

- \*Guide Price £675,000 - £700,000\*
  - Large Four Bedroom Terraced Home With Extension & Loft Conversion
  - Off Road Parking For Multiple Cars
  - Downstairs W/C & Functional Storage Throughout
  - Fantastic Transport Links Straight Into London (Redbridge & Gants Hill Station)
- \*Watch Our Video Walkthrough\*
  - High Spec Modern Finishing Throughout With Full Smart Home System
  - Tranquil Private Garden Perfect For Hosting And Al Fresco Dining
  - Expansive Living Area With A Blend Of Character & Modern Taste
  - Prime Location On A Sough After Road With Private Schools & Mosque Close By

Lounge / Dining Room  
26'6" x 13'3" (8.08 x 4.05)

Kitchen / Diner  
19'5" x 20'4" (5.92 x 6.20)

Bedroom Two  
15'2" x 11'8" (4.64 x 3.56)

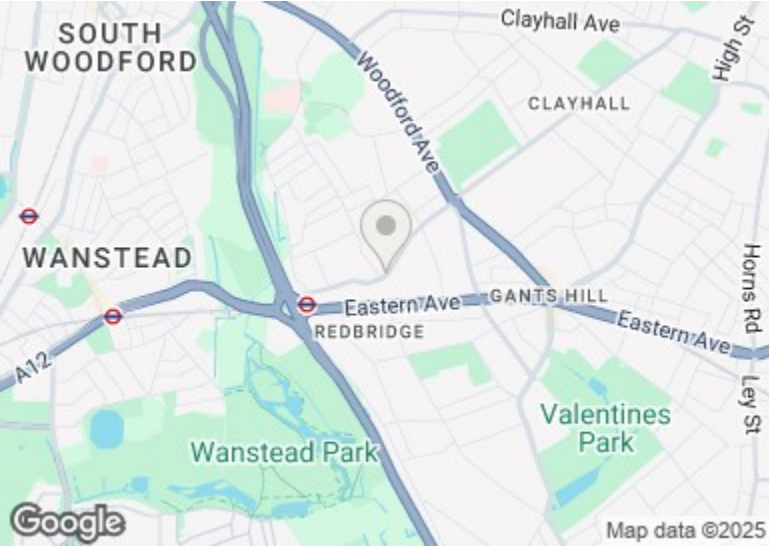
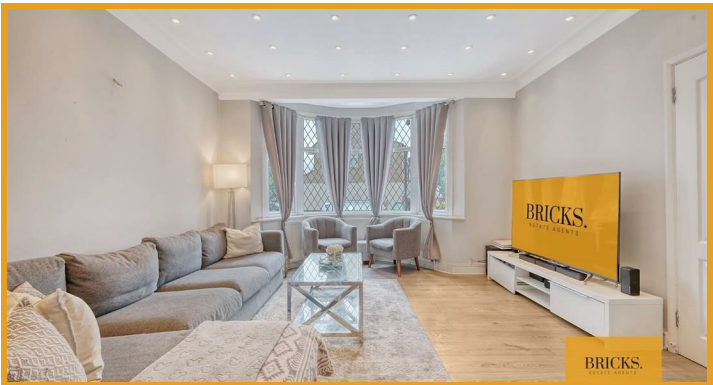
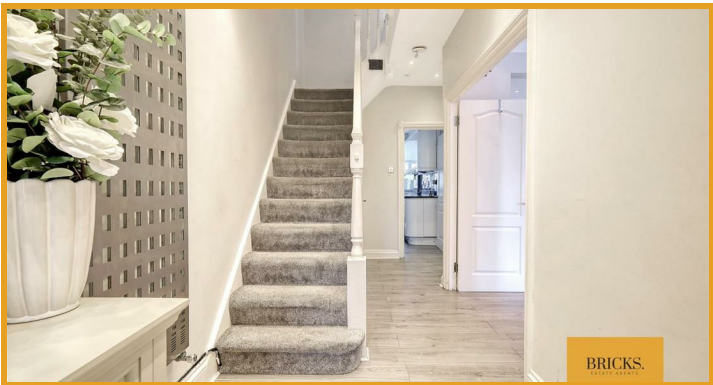
Bedroom Three  
13'10" x 11'8" (4.24 x 3.56)

Bedroom Four  
8'10" x 7'5" (2.71 x 2.28)

Family Bathroom  
9'1" x 7'3" (2.78 x 2.22)

Master Bedroom  
18'7" x 11'4" (5.67 x 3.47)

En-Suite  
6'7" x 6'6" (2.02 x 2.00)



Directions

