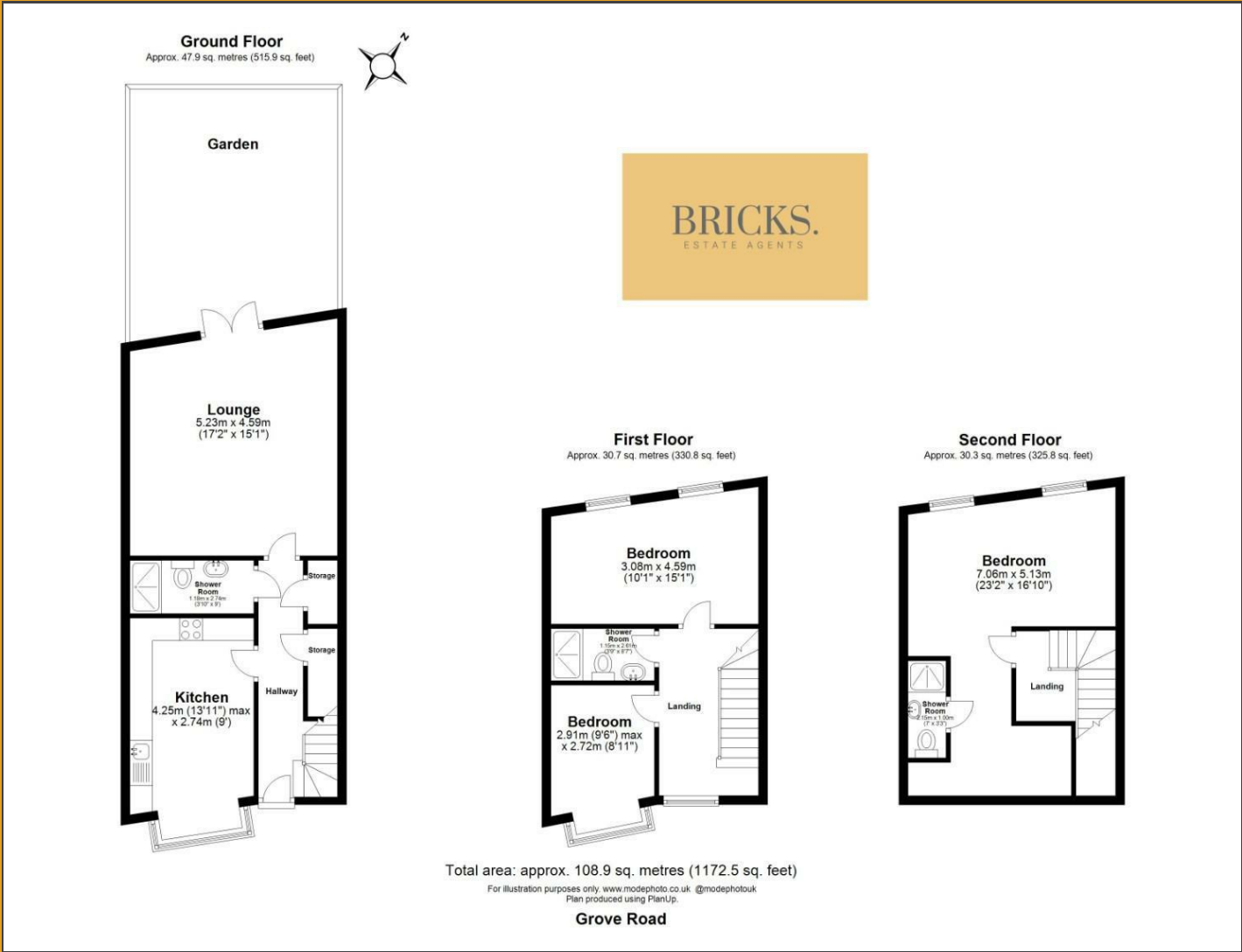


Floor Plan



BRICKS.  
ESTATE AGENTS



£2,700 Per month

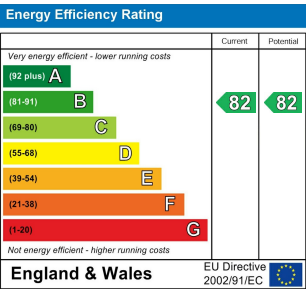
These particulars, whilst believed to be accurate are set out as a general outline only for guidance and do not constitute any part of an offer or contract. Intending purchasers should not rely on them as statements of representation of fact, but must satisfy themselves by inspection or otherwise as to their accuracy. No person in this firms employment has the authority to make or give any representation or warranty in respect of the property.

Contact Us

- 0203 634 9998
- hello@bricksestateagents.co.uk
- Crate 9 15 Oakwood Hill Industrial Estate, Loughton, Essex, IG10 3TZ

280 Grove Green Road,  
London, E11 4EN

Located on Grove Green Road, this newly built three bedroom end terraced house is a stunning addition to the rental market. Bricks Estate Agents are delighted to present this immaculately finished property, offering a comfortable and stylish living space.





# 280 Grove Green Road, London, E11 4EN

3 3 1 B

- Available From 23rd of June 2025
- Three Double Bedrooms
- Comfortable And Stylish Living
- Private Garden
- Excellent Transport Links
- Newly Built (End Terraced)
- Three Bathrooms
- Fully Fitted Kitchen
- Immaculately Finished Throughout
- Bike And Bin Storage

## Entrance Hall

Kitchen  
13'11"x 8'11" (4.25x 2.74)

Lounge  
17'1" x 15'0" (5.23 x 4.59)

Shower Room One  
3'10" x 8'11" (1.18 x 2.74)

## First Floor Landing

Bedroom Three  
10'1" x 15'0" (3.08 x 4.59)

Shower Room Two  
3'9" x 8'6" (1.15 x 2.61)

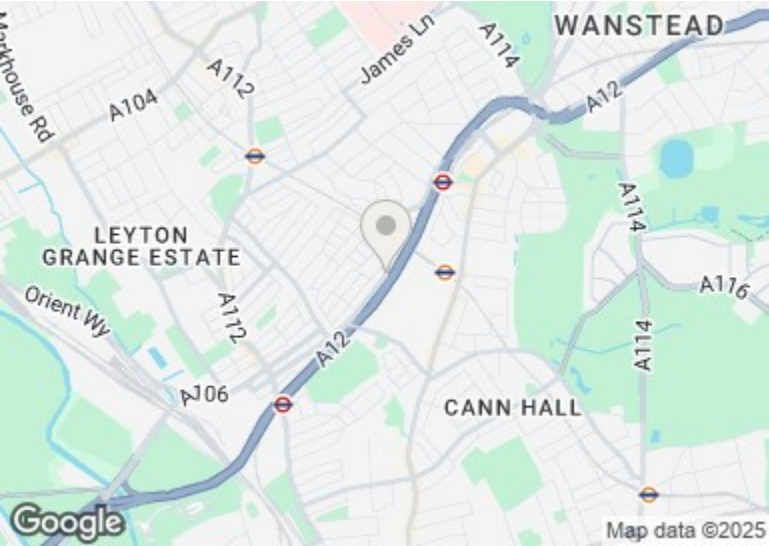
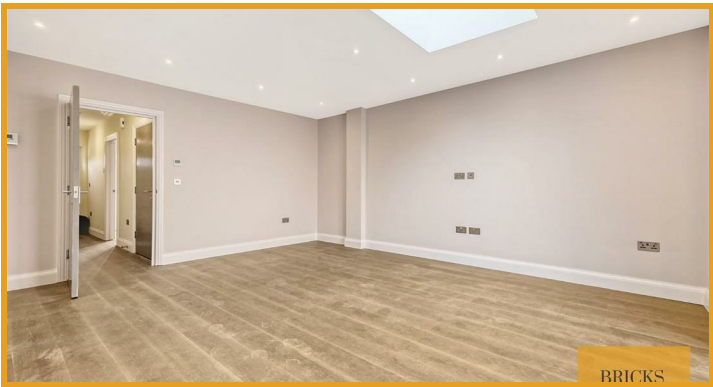
Bedroom Two  
9'6" x 8'11" (2.91 x 2.72)

## Second Floor Landing

Main Bedroom  
23'1" x 16'9" (7.06 x 5.13)

Shower Room Three  
7'0" x 3'3" (2.15 x 1.00)

Private Rear Garden  
157'1" (47.9)



## Directions

BRICKS.  
ESTATE AGENTS