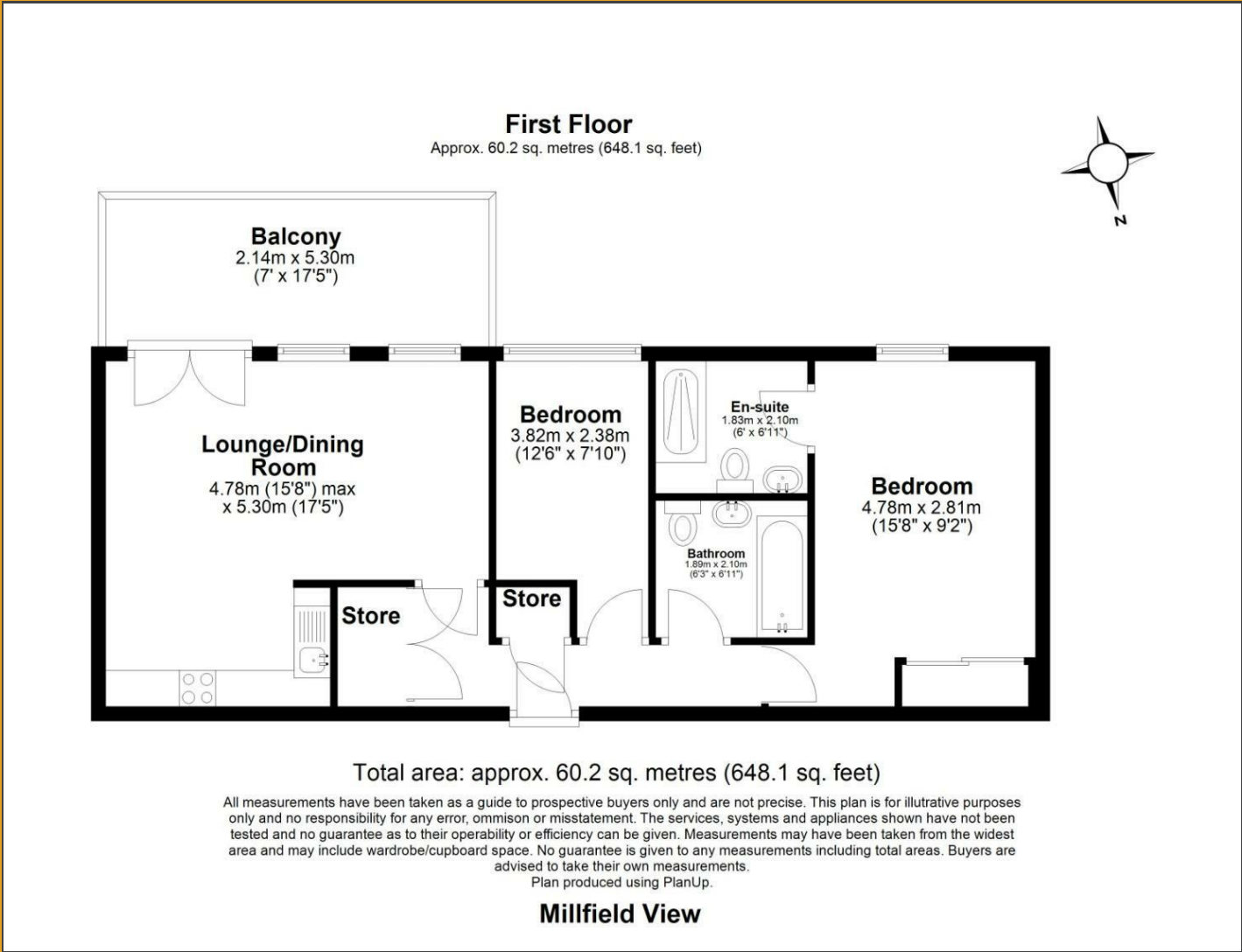


Floor Plan

BRICKS.
ESTATE AGENTS

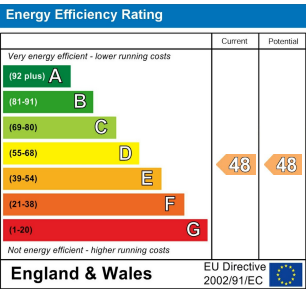


£390,000

These particulars, whilst believed to be accurate are set out as a general outline only for guidance and do not constitute any part of an offer or contract. Intending purchasers should not rely on them as statements of representation of fact, but must satisfy themselves by inspection or otherwise as to their accuracy. No person in this firms employment has the authority to make or give any representation or warranty in respect of the property.

Contact Us

- 0203 634 9998
- hello@bricksestateagents.co.uk
- Crate 9 15 Oakwood Hill Industrial Estate, Loughton, Essex, IG10 3TZ



33 Millfield View Ashwells Road,
Pilgrims Hatch, CM15 9SE

Bricks Estate Agents proudly presents an extraordinary opportunity to own this expansive 2-bedroom apartment nestled in the highly sought-after Millfield Park Estate, located at Millfield View, Brentwood. This idyllic setting combines the tranquillity of countryside living with the vibrant charm of Brentwood, offering residents a perfect blend of nature and convenience. Enjoy nearby parks, golf courses, and delightful local shops, all while benefiting from excellent transport links to London and beyond.

33 Millfield View Ashwells Road, Pilgrims Hatch, CM15 9SE

2 2 1 E

- *Guide Price £390,000 - £399,999*
- Two Bedrooms & Two Bathrooms
- Private Gated Community Ensuring A Peaceful Environment
- Top Of The Range High Quality Finishing
- Ample Storage Space In This Large Two Bedroom Apartment
- *Watch Our Video Walkthrough*
- Tastefully Decorated & Designed
- Large Balcony Overlooking Wildlife & Luxury Communal Grounds
- High Spec Bosch Appliances Integrated Throughout The Property

Lounge / Dining Room
15'8" x 17'4" (4.78 x 5.30)

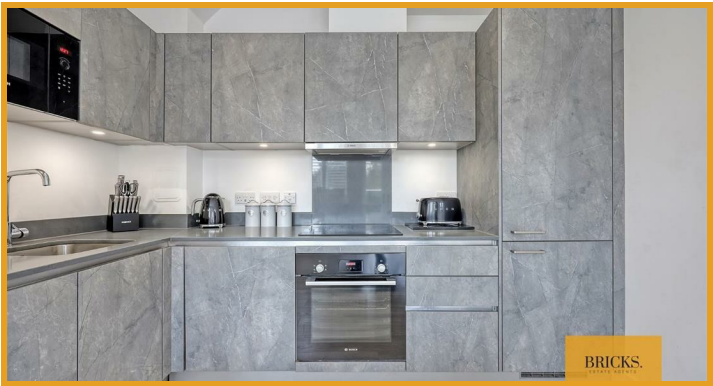
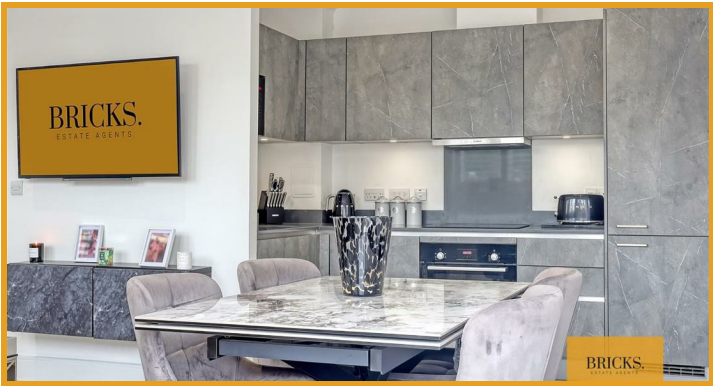
Bedroom One
15'8" x 9'2" (4.78 x 2.81)

Bedroom Two
12'6" x 7'9" (3.82 x 2.38)

Family Bathroom
6'2" x 6'10" (1.89 x 2.10)

En-Suite
6'0" x 6'10" (1.83 x 2.10)

Balcony
7'0" x 17'4" (2.14 x 5.30)



Directions

BRICKS.
ESTATE AGENTS