

Floor Plan



BRICKS.
ESTATE AGENTS

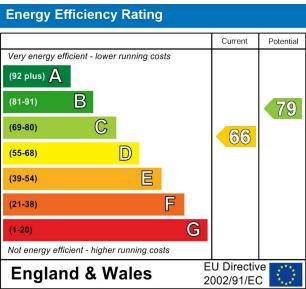


£500,000

These particulars, whilst believed to be accurate are set out as a general outline only for guidance and do not constitute any part of an offer or contract. Intending purchasers should not rely on them as statements of representation of fact, but must satisfy themselves by inspection or otherwise as to their accuracy. No person in this firms employment has the authority to make or give any representation or warranty in respect of the property.

Contact Us

- 0203 634 9998
- hello@bricksestateagents.co.uk
- Crate 9 15 Oakwood Hill Industrial Estate, Loughton, Essex, IG10 3TZ



40 Brighton Avenue,
London, E17 7NE

Bricks Estate Agents proudly presents an exquisite two-bedroom maisonette nestled in the vibrant heart of Walthamstow, located at Brighton Avenue, E17. This stunning ground floor garden apartment is a true gem, meticulously designed to blend modern aesthetics with timeless charm, making it the perfect retreat for those seeking elegance and comfort.

Step inside to be greeted by an inviting hallway that leads to a bright and airy reception area. Adorned with plush white and soft baby green walls, the space is complemented by beautifully engineered wooden flooring that adds warmth and sophistication. A magnificent floor-to-ceiling window floods the room with natural light while offering picturesque views of your private garden.

40 Brighton Avenue, London, E17 7NE



- *Guide Price £500,000 - £525,000*
- Two Bedroom Maisonette With Private Garden
- Ample Amounts Of Storage
- Large Windows Oozing With Natural Light
- Sophisticated Kitchen Breakfast Room
- **Watch Our Video Walkthrough**
- Picturesque Private 40ft Tranquil Garden
- Two Large Bedrooms With Character Filled Elements
- Japanese Plunge Pool Bath With Mosaic Style Bathroom
- Fantastic Transport Links Just A Short Walk Away From Town & The Station

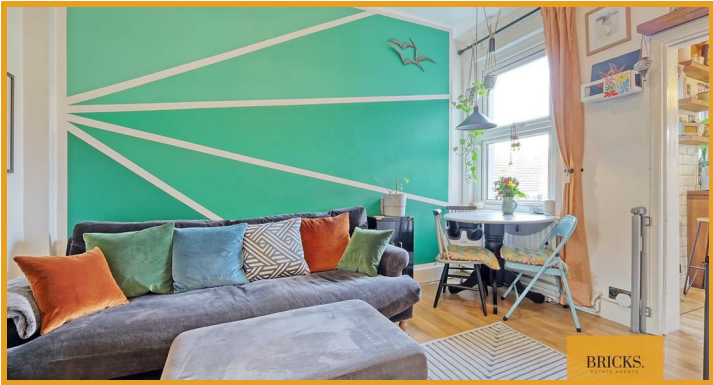
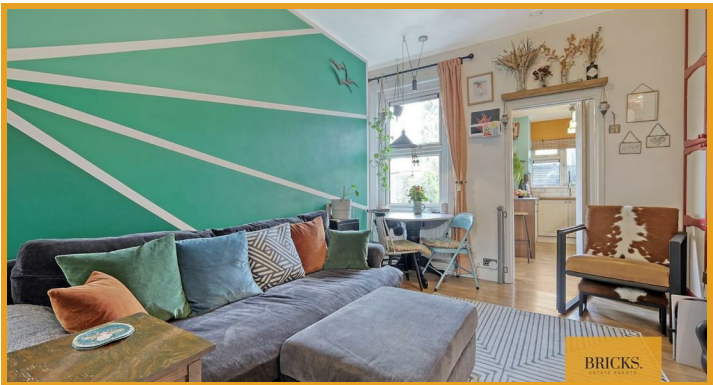
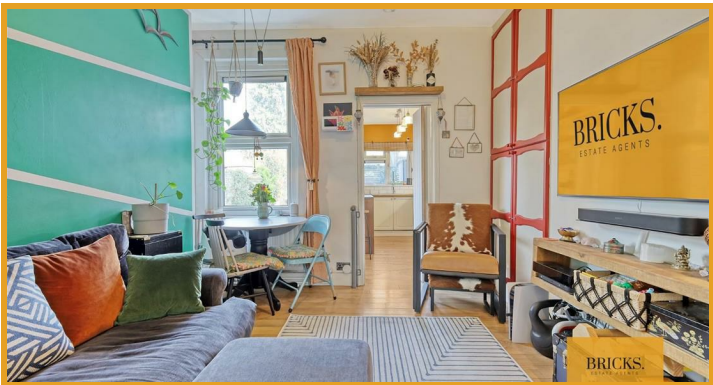
Living Room
12'2" x 11'1" (3.73 x 3.38)

Kitchen / Breakfast Room
12'0" x 6'11" (3.68 x 2.13)

Bedroom One
9'9" x 12'9" (2.99 x 3.91)

2.92 X 2.36

Garden
41'6" x 18'11" (12.66 x 5.79)



Directions

