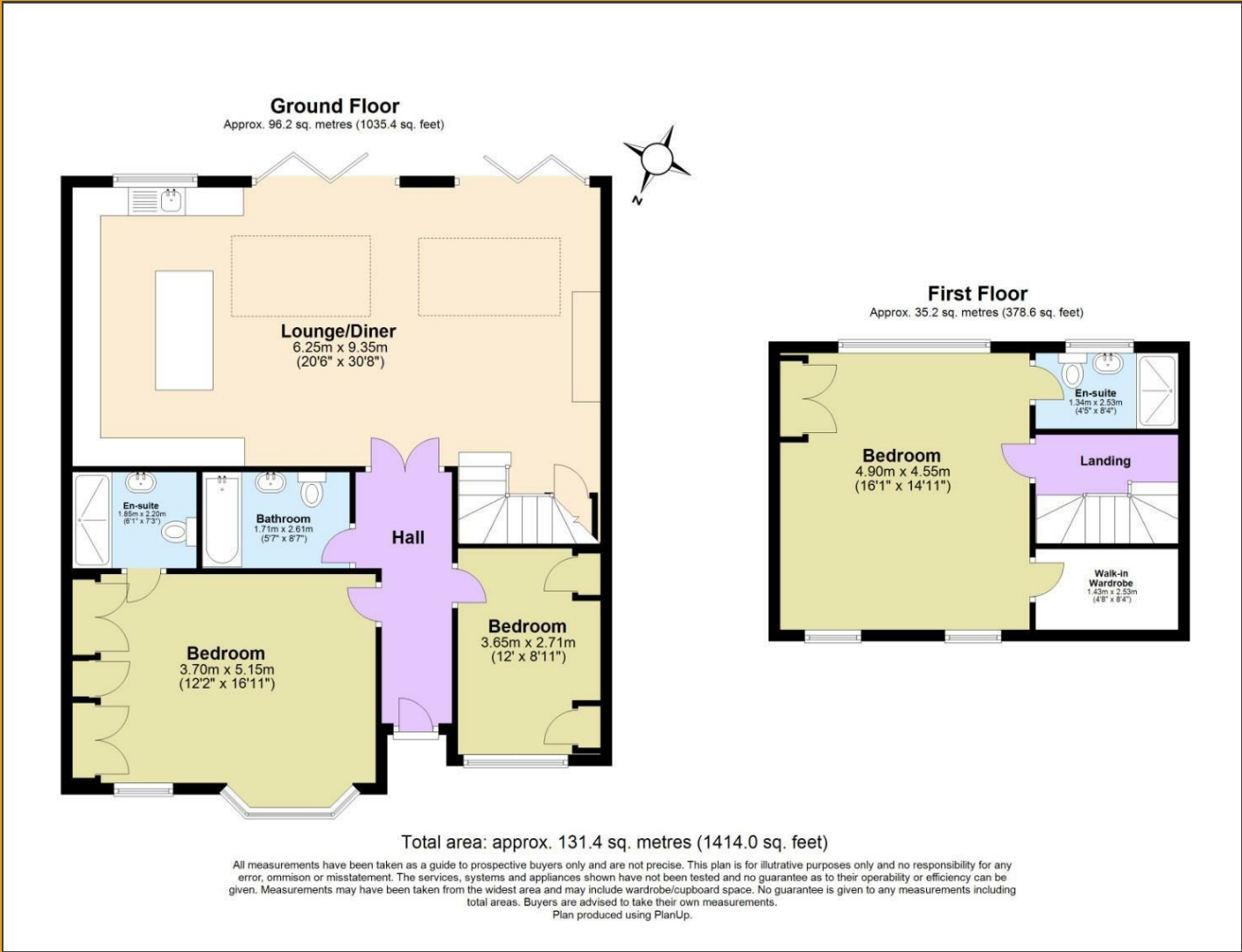


Floor Plan

BRICKS.
ESTATE AGENTS



£850,000

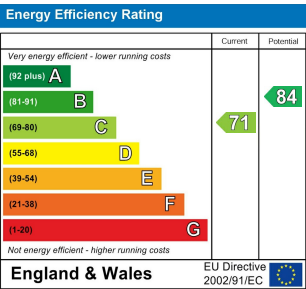
These particulars, whilst believed to be accurate are set out as a general outline only for guidance and do not constitute any part of an offer or contract. Intending purchasers should not rely on them as statements of representation of fact, but must satisfy themselves by inspection or otherwise as to their accuracy. No person in this firms employment has the authority to make or give any representation or warranty in respect of the property.

17 Rosslyn Avenue,
London, E4 6DX

Bricks Estate Agents are proud to present this immaculately refurbished and extended three-bedroom, three-bathroom bungalow situated on the highly sought-after Rosslyn Avenue in Chingford, E4. This stunning home has been designed to an exceptional standard, offering a perfect blend of modern living and luxurious finishes, all located in a prime area known for its tranquility, excellent amenities, and community appeal.

Contact Us

- 0203 634 9998
- hello@bricksestateagents.co.uk
- Crate 9 15 Oakwood Hill Industrial Estate, Loughton, Essex, IG10 3TZ



17 Rosslyn Avenue, London, E4 6DX



- *Guide Price £850,000*
 - Exceptional Redefined Granit Work Top Kitchen With Island
 - Three Overly Sized Bedrooms With Full Custom Fitted Wardrobes And Shutters
 - Large Driveway With Eco Friendly Electric Charger Fitted
 - Large Living And Entertainment Space With Media Wall And Fireplace
- *Watch Our Video Walkthrough*
 - High Specification Bathroom and En-Suites
 - Loft Conversion With Skylights Fitted Oozing Natural Light With Eve's Storage
 - Purpose Built Timeless Family Forever Home
 - Forest View Allowing Peaceful Tranquillity And Privacy In Your Own Retreat

Lounge / Diner / Kitchen
20'6" x 30'8" (6.25 x 9.35)

Master Bedroom
12'1" x 16'10" (3.70 x 5.15)

Master Bedroom En-Suite
6'0" x 7'2" (1.85 x 2.20)

Bedroom Two
11'11" x 8'10" (3.65 x 2.71)

Bedroom Three
16'0" x 14'11" (4.90 x 4.55)

Bedroom Three En-Suite
4'4" x 8'3" (1.34 x 2.53)

Family Bathroom
5'7" x 8'6" (1.71 x 2.61)

Bedroom Three Walk In Wardrobe
4'8" x 8'3" (1.43 x 2.53)



Directions

