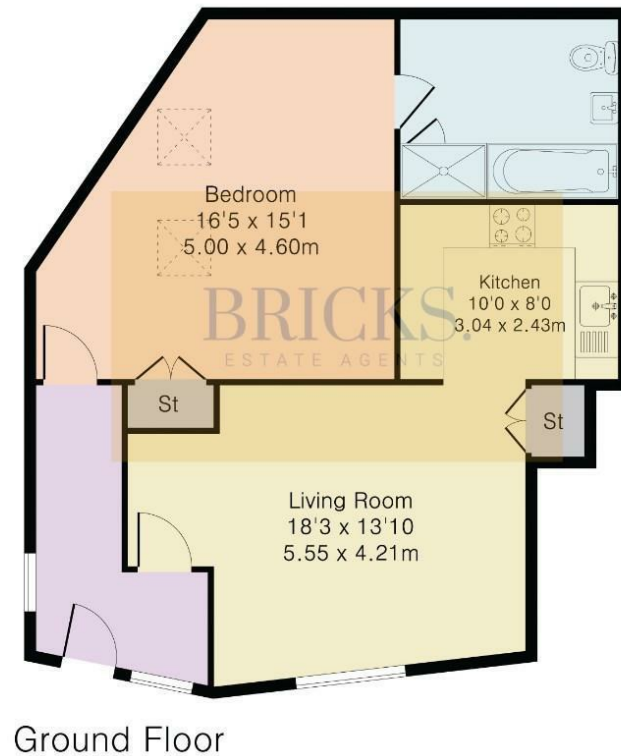


Floor Plan

BRICKS.

ESTATE AGENTS

Approximate Gross Internal Area 700 sq ft – 65 sq m



£1,900 Per month

These particulars, whilst believed to be accurate are set out as a general outline only for guidance and do not constitute any part of an offer or contract. Intending purchasers should not rely on them as statements of representation of fact, but must satisfy themselves by inspection or otherwise as to their accuracy. No person in this firm's employment has the authority to make or give any representation or warranty in respect of the property.

Contact Us



0203 634 9998



hello@bricksestateagents.co.uk



Crate 29 15 Oakwood Hill Industrial Estate, Loughton, Essex, IG10 3TZ

Energy Efficiency Rating		Current	Potential
Very energy efficient - lower running costs			
(92 plus)	A		
(81-91)	B		
(69-80)	C		
(55-68)	D	65	71
(39-54)	E		
(21-38)	F		
(1-20)	G		
Not energy efficient - higher running costs			
England & Wales		EU Directive 2002/91/EC	

30A Cliff Road, London, NW1 9AJ

Bricks Estate Agents are thrilled to offer this exceptional, larger-than-average one-bedroom ground floor flat, available to rent in the vibrant heart of Camden.

Immaculately presented throughout, this spacious apartment features a bright and open-plan kitchen/living area with high ceilings, flooded with natural light. The property benefits from its own private entrance, a contemporary and stylish bathroom, and a generously sized double bedroom complete with built-in wardrobes and two stunning skylights, creating a bright and inviting space.

Ideally located, the flat is within walking distance of Kentish Town, Caledonian Road, and Camden Road stations, providing excellent transport links via the Northern, Piccadilly, Overground, and Thameslink lines.

Don't miss the chance to rent this beautiful home in one of London's most sought-after neighborhoods!

30A Cliff Road, London, NW1 9AJ



- ****Open Day Friday 27th September By Appointment Only****
- Ground Floor
- Ample Storage
- Flooded With Natural Light
- High Ceilings
- Situated In The Heart Of Camden
- One Double Bedroom
- Own Entrance
- Open Plan Living
- Short Walk From Kentish Town, Caledonian Road And Camden Road Stations

Entrance Hall

Living Room

18'2" x 13'9" (5.55 x 4.21)

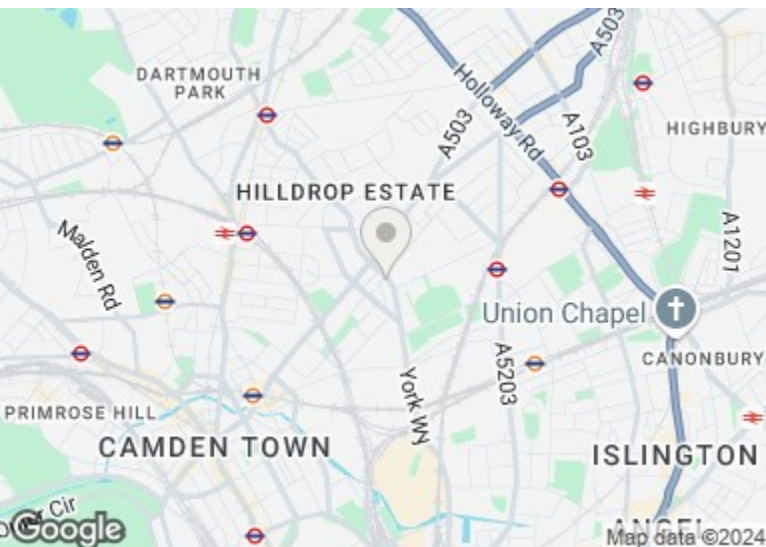
Kitchen

9'11" x 7'11" (3.04 x 2.43)

Bedroom

16'4" x 15'1" (5.00 x 4.60)

Bathroom



Directions

BRICKS.

ESTATE AGENTS