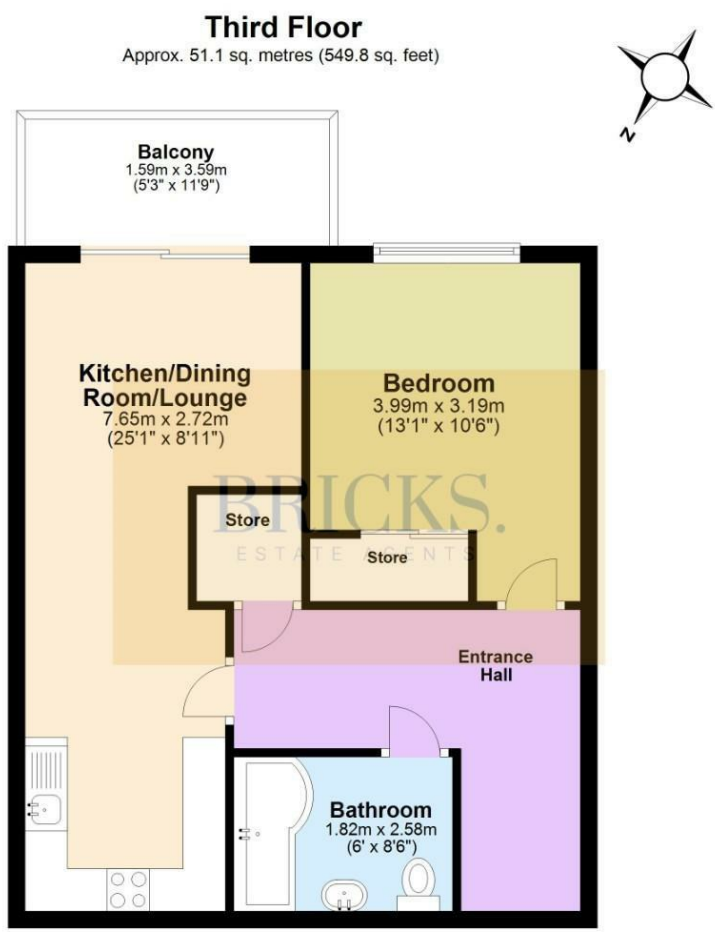


Floor Plan

BRICKS.
ESTATE AGENTS



Total area: approx. 51.1 sq. metres (549.8 sq. feet)
Leslie Hitchcock House



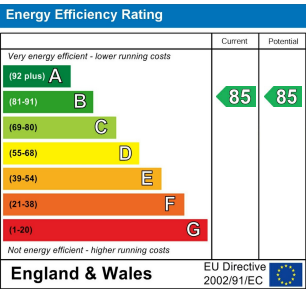
BRICKS.
ESTATE AGENTS

£219,999

These particulars, whilst believed to be accurate are set out as a general outline only for guidance and do not constitute any part of an offer or contract. Intending purchasers should not rely on them as statements of representation of fact, but must satisfy themselves by inspection or otherwise as to their accuracy. No person in this firms employment has the authority to make or give any representation or warranty in respect of the property.

Contact Us

- 0203 634 9998
- hello@bricksestateagents.co.uk
- Crate 9 15 Oakwood Hill Industrial Estate, Loughton, Essex, IG10 3TZ



310 Leslie Hitchcock House 21 Minter Road,
Barking, IG11 0TH

Bricks Estate Agents is delighted to introduce this stunning and contemporary one-bedroom apartment in Leslie Hitchcock House. This beautifully designed property offers a perfect blend of modern living and convenience, making it an ideal choice for first-time buyers, young professionals, or investors seeking a prime buy-to-let opportunity.

310 Leslie Hitchcock House 21 Minter Road, Barking, IG11 0TH

1 1 1 B

- *Appointment Based Booking Only*
- Balcony With Park Views
- Large Bathroom With Oversized Bath Tub
- Bright Modern Apartment
- Open Plan Indoor Outdoor Living
- Large Master Bedroom
- Immaculate Condition Throughout
- Allocated Underground Secure Parking (Shutter Entrance)
- Second Floor With Lift Access
- Storage In Abundance

Entrance Hall

Bedroom

13'1" x 10'2" (3.99 x 3.11)

Kitchen/Dining Room/Lounge

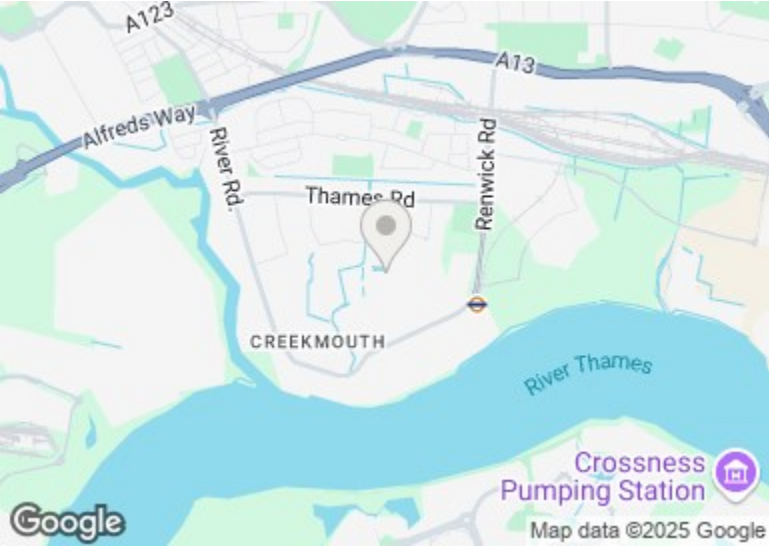
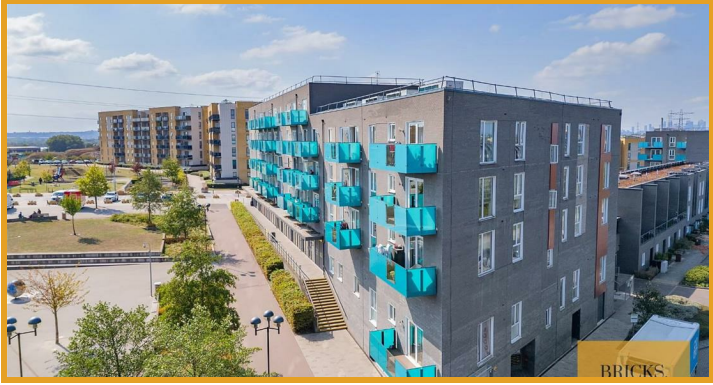
25'1" x 8'11" (7.65 x 2.72)

Bathroom

5'11" x8'5" (1.82 x2.58)

Balcony

5'2" x 11'9" (1.59 x 3.59)



Directions

BRICKS.
ESTATE AGENTS