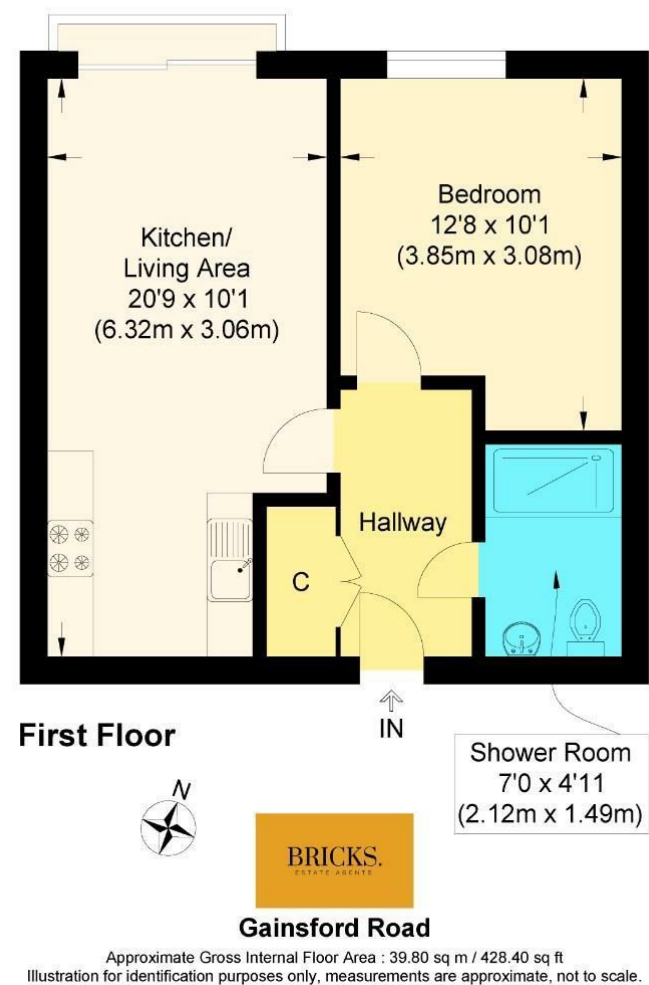


Floor Plan




BRICKS.
ESTATE AGENTS



£300,000

These particulars, whilst believed to be accurate are set out as a general outline only for guidance and do not constitute any part of an offer or contract. Intending purchasers should not rely on them as statements of representation of fact, but must satisfy themselves by inspection or otherwise as to their accuracy. No person in this firm's employment has the authority to make or give any representation or warranty in respect of the property.

Contact Us

-  0203 634 9998
-  hello@bricksestateagents.co.uk
-  Crate 9 15 Oakwood Hill Industrial Estate, IG10 3TZ

Energy Efficiency Rating		Current	Potential
Very energy efficient - lower running costs			
(92 plus)	A		
(81-91)	B	81	81
(69-80)	C		
(55-68)	D		
(39-54)	E		
(21-38)	F		
(1-20)	G		
Not energy efficient - higher running costs			
England & Wales		EU Directive 2002/91/EC	

Flat 27 47 Gainsford Road, London, E17 6ZL

Discover this stunning four-storey building, meticulously designed and constructed by the renowned housing developer, Pocket Living. Situated just a short 10-minute walk from Walthamstow Central, Blackhorse Road, St James Street, and Walthamstow Queen's Road stations, this prime location offers easy access to transportation and a wealth of amenities.

Flat 27 47 Gainsford Road, London, E17 6ZL



- Guide Price £300,000 - £325,000 L/H
- First Floor
- Open Plan Living
- Beautifully Landscaped Communal Gardens
- Amazing Transport Links
- One Double Bedroom
- Immaculately Presented Throughout
- Secure Bike Storage
- Prime Location
- Ideal For First Time Buyers

Hallway

Kitchen/Living Area
20'8" x 10'0" (6.32 x 3.06)

Bedroom
12'7" x 10'1" (3.85 x 3.08)

Shower Room
6'11" x 4'10" (2.12 x 1.49)



Directions

