



Wyndham Mews, Plymouth

OIRO £180,000



Key Features

- End of terrace
- Three double bedrooms
- Characteristic property
- Garage
- High ceilings
- Convenient location
- EPC rating C
- Council tax B
- Tenure: Freehold





Northwood are delighted to present this characteristic end of terrace, three-bedroom property in the popular residential area of Stoke. Close to local amenities such as shops and schools.

This property would make the perfect family home with ample space. It benefits from beautiful high ceilings with wooden beams and has a lovely cottage feel to it.

On entering the property, you will find the first double bedroom neutrally decorated with white walls, carpeted and boasting a large window with wood windowsill, allowing for plenty of natural light. Downstairs you will also find a large kitchen and dining area. Tiled flooring with matching wooden wall and base units with contrasting black countertop. Neutrally decorated with white walls.

Leading up the wooden and glass staircase you will find two great-sized double bedrooms boasting wooden beams, carpeted and white walls. Both very light and airy with panelled windows.

The living room gives great character to the property with stunning high ceiling and wooden beams, with rustic inlet feature fireplace and prominent chimney breast. Carpeted with white walls. Exposed brick corner wall. The property also boasts a modest balcony with potential to be extended.

Upstairs you will find the bathroom with shower, bath, W/C and sink with mixer tap. The bathroom benefits from a beautiful high ceiling and skylight. Tiled throughout.

The property also has a garage fitting two cars and perfect for additional storage.

Gas central heating

Tenure: Freehold

EPC: C

Council tax: B

Disclaimer

These particulars are issued in good faith but do not constitute representations of fact or form part of any offer or contract. The matters referred to in these particulars should be independently verified by prospective buyers or tenants. Neither Northwood nor any of its employees or agents has any authority to make or give any representation or warranty whatever in relation to this property.

We endeavour to make our sales particulars accurate and reliable, however, they do not constitute or form part of an offer or any contract and none is to be relied upon as statements of representation or fact. Any services, systems and appliances listed in this specification have not been tested by us and no guarantee as to their operating ability or efficiency is given. All measurements have been taken as a guide to prospective buyers only and are not precise.

If you require clarification or further information on any points, please contact us, especially if you are travelling some distance to view. Fixtures and fittings other than those mentioned are to be agreed with the seller by separate negotiation.



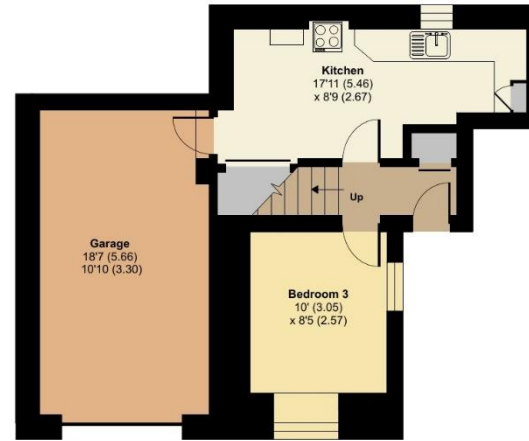




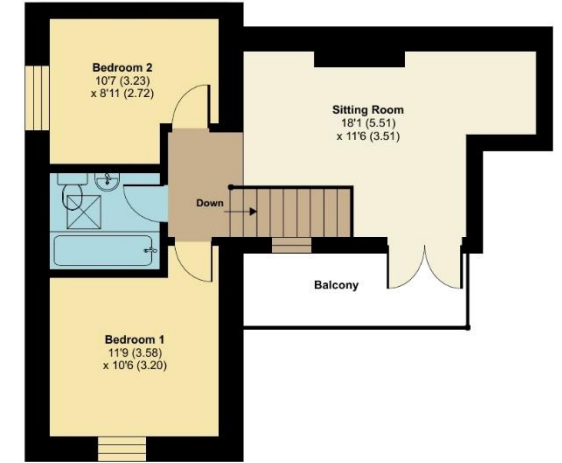


Wyndham Mews, Plymouth, PL1

Approximate Area = 978 sq ft / 90.9 sq m
For identification only - Not to scale



GROUND FLOOR



FIRST FLOOR

Score	Energy rating	Current	Potential
92+	A		
81-91	B		82 B
69-80	C	69 C	
55-68	D		
39-54	E		
21-38	F		
1-20	G		

RICS Certified Property Measurer Floor plan produced in accordance with RICS Property Measurement Standards incorporating International Property Measurement Standards (IPMS2 Residential). © rldhcom 2024. Produced for Northwood. REF: 1184158



