



65 Hall Carr Lane, Longton, PR4 5JL

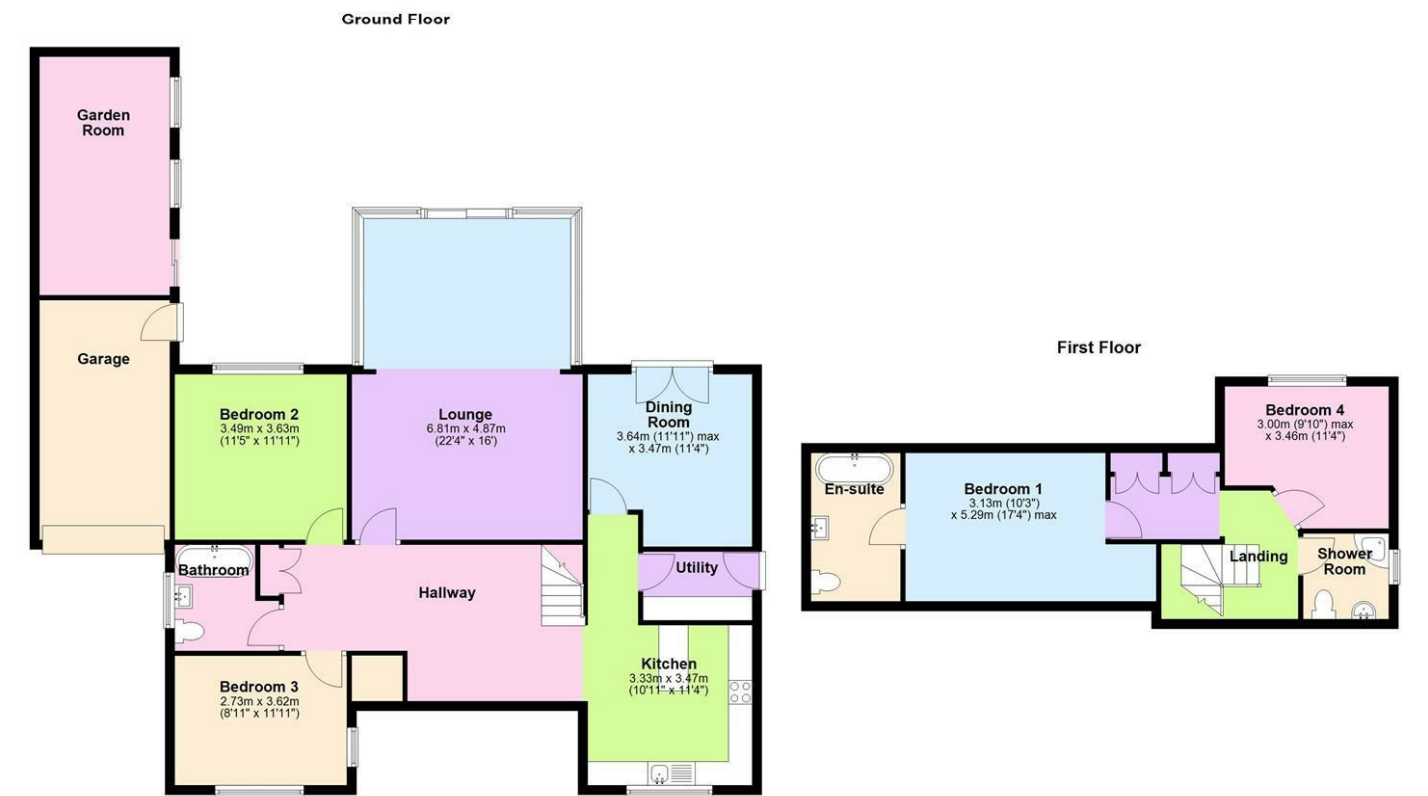
£575,000

Nestled within a quiet rural village, this impressive four-bedroom detached house offers an ideal blend of generous living space, modern upgrades, all set within a large private plot.

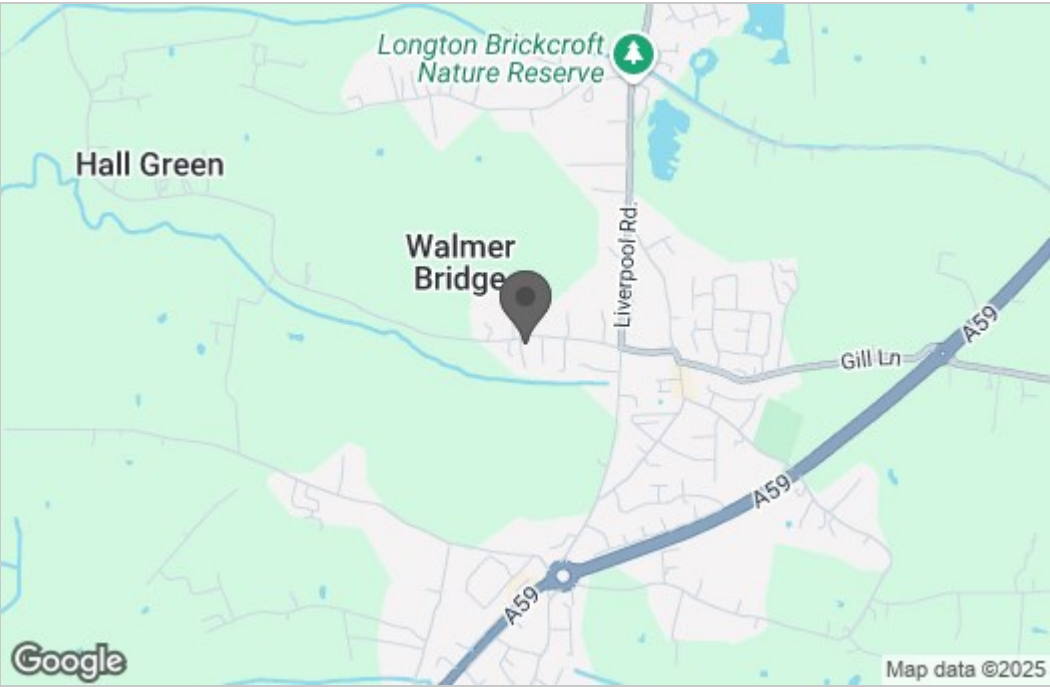
The property is approached via a spacious driveway providing ample off-road parking and access to the garage. To the rear, a large, south facing garden offers plenty of outdoor space, complemented by a versatile garden room perfect for a home office or studio. Internally, the house features two spacious reception rooms, ideal for both family living and entertaining. The recently renovated kitchen is fitted with a stylish range of modern units and integrated appliances, creating a fresh, contemporary feel, along side the separate Utility Room. There are four well-proportioned bedrooms, two on the ground floor and two on the 1st floor, the layout offers exciting potential for further extension; with the addition of dormer windows, the first floor could be significantly enhanced to create extra bedrooms or bathrooms subject to the necessary planning permissions. Previous planning permission had been granted for conversion of the garage and garden room into additional living accommodation. This would make a fantastic annexe.

This attractive home offers the perfect opportunity for buyers looking for a combination of peaceful village living, modern comforts, and scope to add value and space. If you have any questions or would like to arrange a viewing, please get in touch.

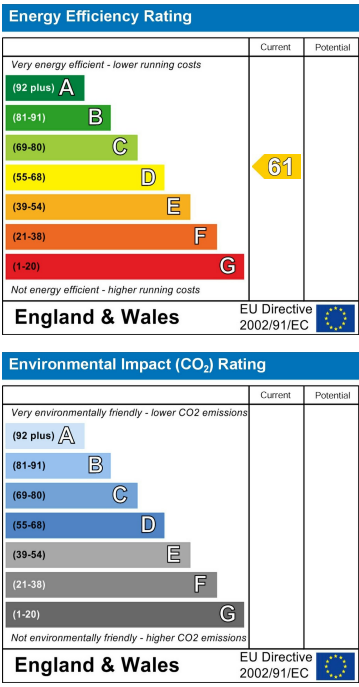
Floor Plan



Area Map



Energy Efficiency Graph



These particulars, whilst believed to be accurate are set out as a general outline only for guidance and do not constitute any part of an offer or contract. Intending purchasers should not rely on them as statements of representation of fact, but must satisfy themselves by inspection or otherwise as to their accuracy. No person in this firms employment has the authority to make or give any representation or warranty in respect of the property.