



4 Houghton Close, Preston, PR1 9HT

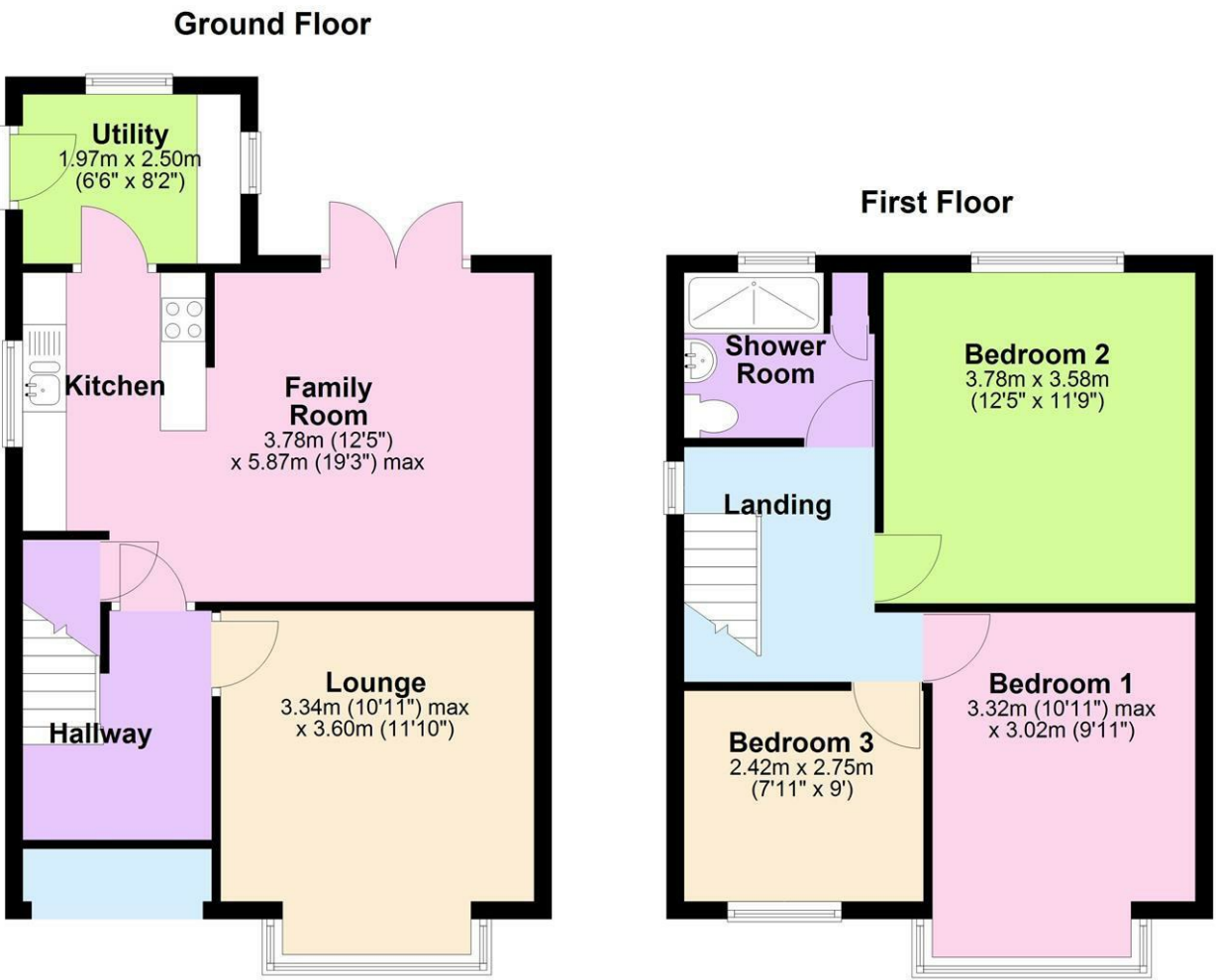
£290,000

Tucked away on a quiet cul-de-sac in the heart of Penwortham, this beautifully presented 3-bedroom semi-detached home offers stylish and comfortable living, perfect for families or first-time buyers.

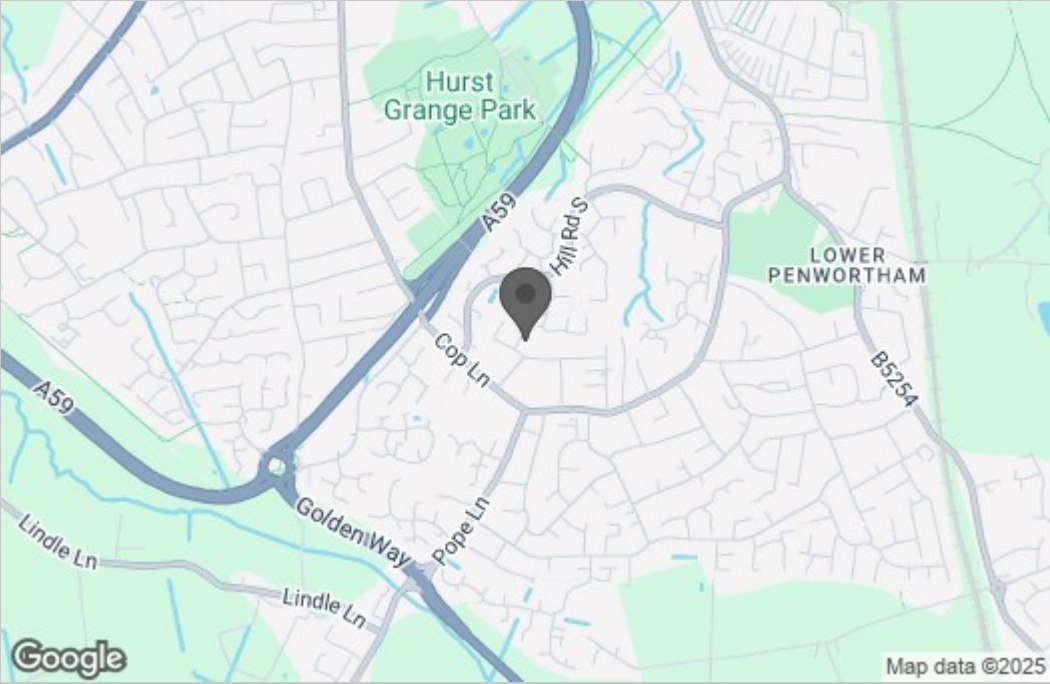
In excellent condition throughout, the property features a bright front lounge and an open-plan kitchen with dining and additional lounge space, ideal for modern living. A separate utility room provides added convenience, while outside you'll find a detached garage and a well-maintained garden. Upstairs boasts two generous double bedrooms and a spacious third bedroom, all served by a contemporary bathroom with a large walk-in shower.

With its peaceful location, flexible layout, and immaculate presentation, this home is ready to move into. If you have any questions or would like to arrange a viewing, please get in touch.

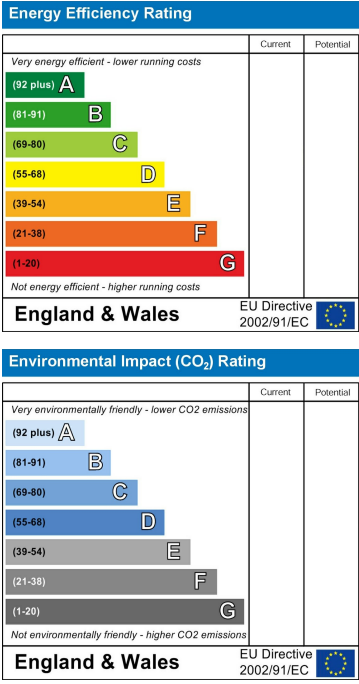
Floor Plan



Area Map



Energy Efficiency Graph



These particulars, whilst believed to be accurate are set out as a general outline only for guidance and do not constitute any part of an offer or contract. Intending purchasers should not rely on them as statements of representation of fact, but must satisfy themselves by inspection or otherwise as to their accuracy. No person in this firms employment has the authority to make or give any representation or warranty in respect of the property.