



3 Bramble Court, Penwortham, PR1 9EW

Offers over £370,000

This beautifully renovated 4-bedroom detached house sits on a generous plot, offering modern comfort and stylish living. Having recently undergone a complete renovation, the property boasts a thoughtfully altered layout, enhancing both space and natural light throughout.

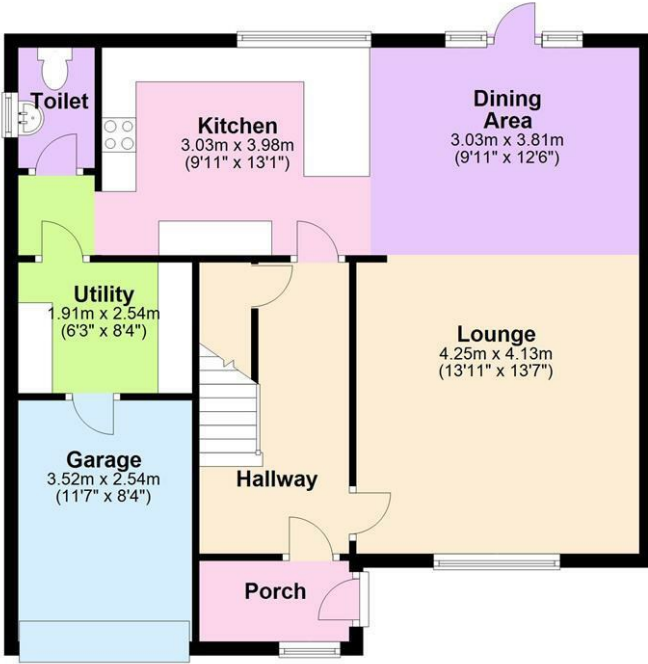
Inside, nearly every detail has been updated to a high specification. The heart of the home is the brand-new kitchen, complete with integrated appliances and sleek finishes. The spacious living and dining areas provide a perfect setting for family gatherings and entertaining.

Upstairs, four generously sized bedrooms offer plenty of space, with the master suite featuring a luxurious en-suite bathroom. The contemporary family bathroom has also been fully updated with modern fixtures and fittings.

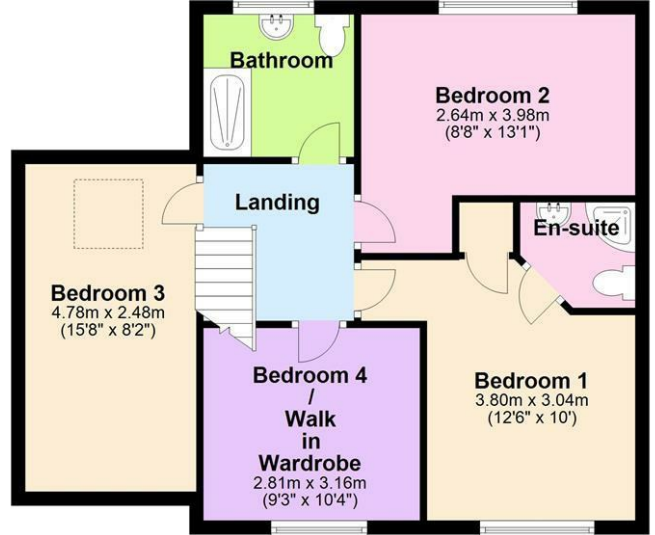
Externally, the property is surrounded by a large, landscaped garden, providing ample outdoor space for relaxation and play. The driveway offers generous parking, making this a complete family home, ready to move into and enjoy.

Floor Plan

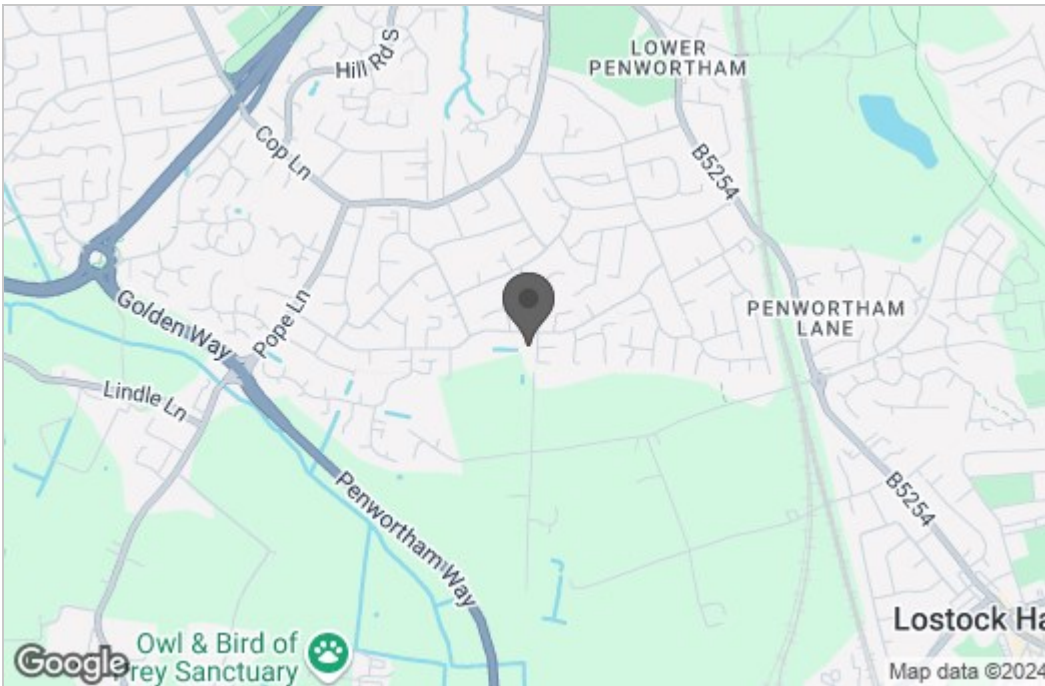
Ground Floor



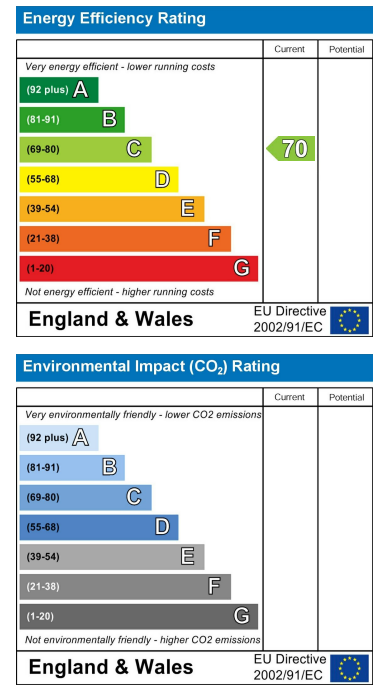
First Floor



Area Map



Energy Efficiency Graph



These particulars, whilst believed to be accurate are set out as a general outline only for guidance and do not constitute any part of an offer or contract. Intending purchasers should not rely on them as statements of representation of fact, but must satisfy themselves by inspection or otherwise as to their accuracy. No person in this firm's employment has the authority to make or give any representation or warranty in respect of the property.