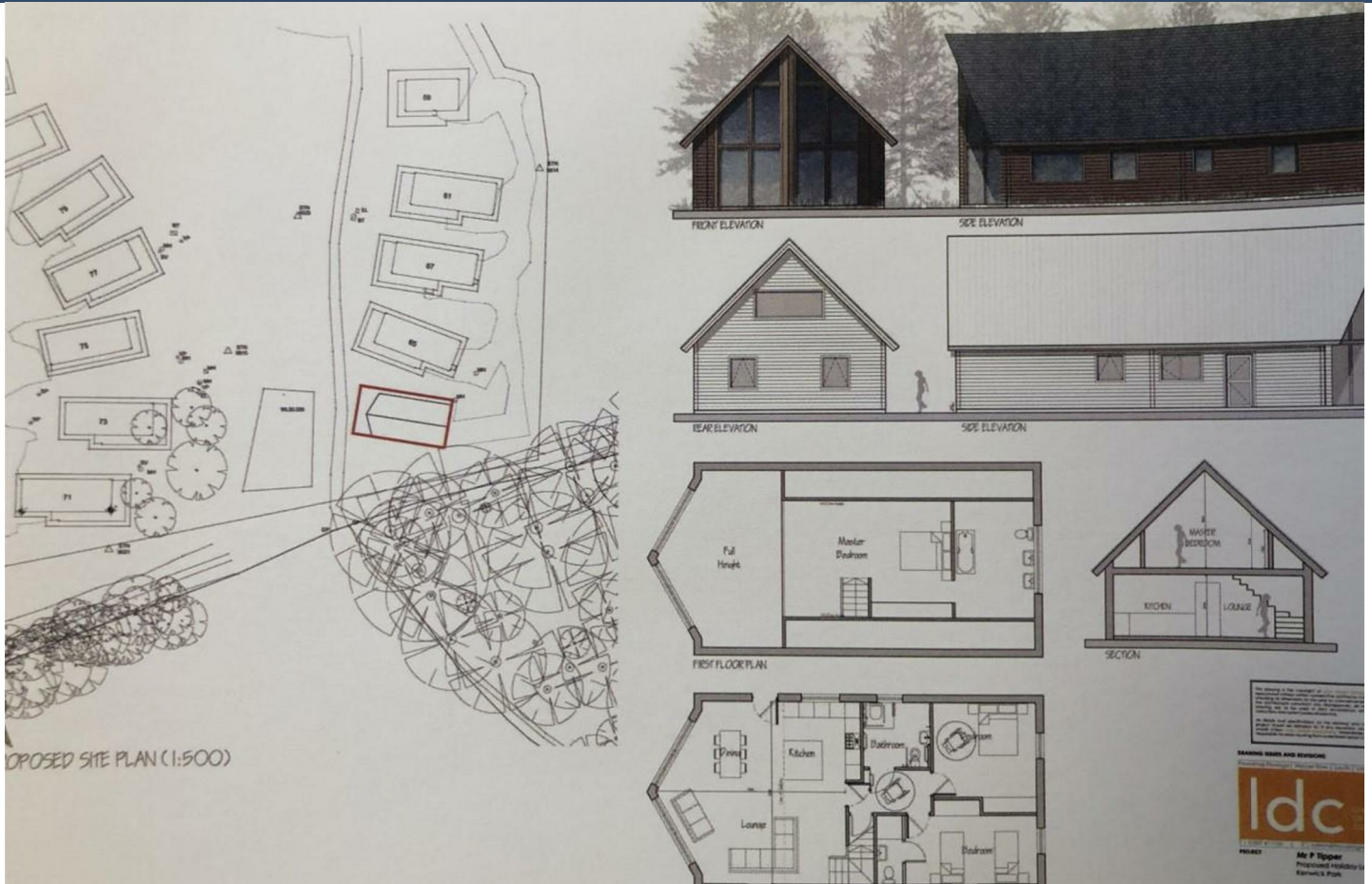




# CHOICE PROPERTIES

*Estate Agents*



## Plot Kenwick Park Woods , Louth, Lincolnshire LN11 8NR

**Price £102,500**

Choice Properties are delighted to present to you a rare opportunity to acquire this good sized plot set within beautiful mature woodland in the secluded and exclusive estate of Kenwick Park. Located close to the affluent market town of Louth in the beautiful rolling Lincolnshire Wolds this super plot has planning permission for a bespoke 3 bedroom lodge.

- Exclusive Plot
- Close to Louth
- Planning Permission for 3 Bedroom Lodge
- Stunning Location
- Beautiful Woodland Location

## Plot Kenwick Park Woods Kenwick, Louth, Lincolnshire, LN11 8NR

### FURTHER INFORMATION

Kenwick Park is a large country estate set in 320 acres of parklands, within the grounds is a Country House Hotel with a Superb Restaurant, a prestigious 18 hole Golf Course, a state of the art Leisure spa. With nature woodland walks this estate offers the perfect 'getaway' to enjoy peace and tranquillity.

### NOTES

Please note that the price is £102,000.00 +VAT

### VIEWING ARRANGEMENTS

For additional information and to make an appointment to view please contact Choice Properties, 25-27 Mercer Row Louth, Lincolnshire. LN11 9JG  
Tel 01507 860033





Energy Efficiency Rating		
	Current	Potential
Very energy efficient - lower running costs (92 plus) <b>A</b>		
(81-91) <b>B</b>		
(69-80) <b>C</b>		
(55-68) <b>D</b>		
(39-54) <b>E</b>		
(21-38) <b>F</b>		
(1-20) <b>G</b>		
Not energy efficient - higher running costs		
<b>England &amp; Wales</b>	EU Directive 2002/91/EC	

Environmental Impact (CO <sub>2</sub> ) Rating		
	Current	Potential
Very environmentally friendly - lower CO <sub>2</sub> emissions (92 plus) <b>A</b>		
(81-91) <b>B</b>		
(69-80) <b>C</b>		
(55-68) <b>D</b>		
(39-54) <b>E</b>		
(21-38) <b>F</b>		
(1-20) <b>G</b>		
Not environmentally friendly - higher CO <sub>2</sub> emissions		
<b>England &amp; Wales</b>	EU Directive 2002/91/EC	

