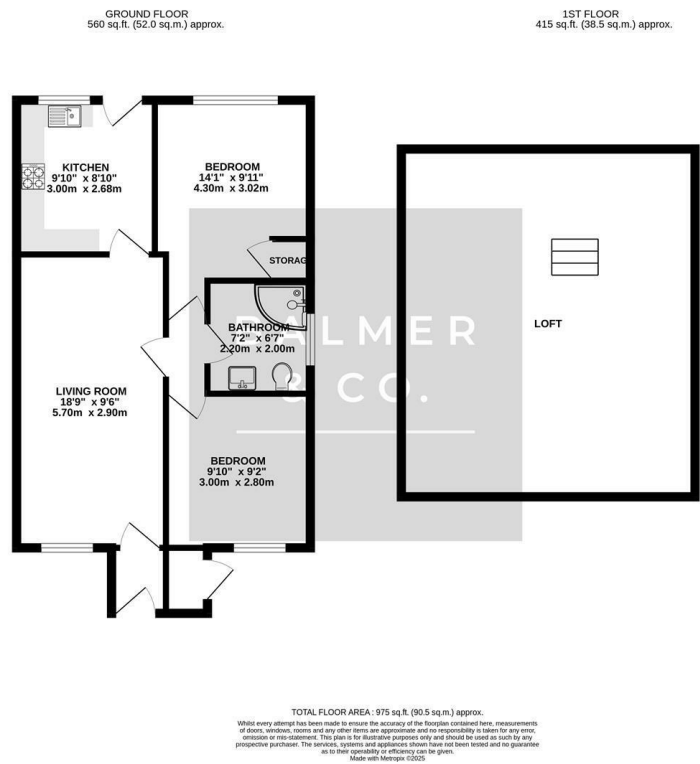


Dalebank, Atherton, M46 9PE
Offers Over £210,000

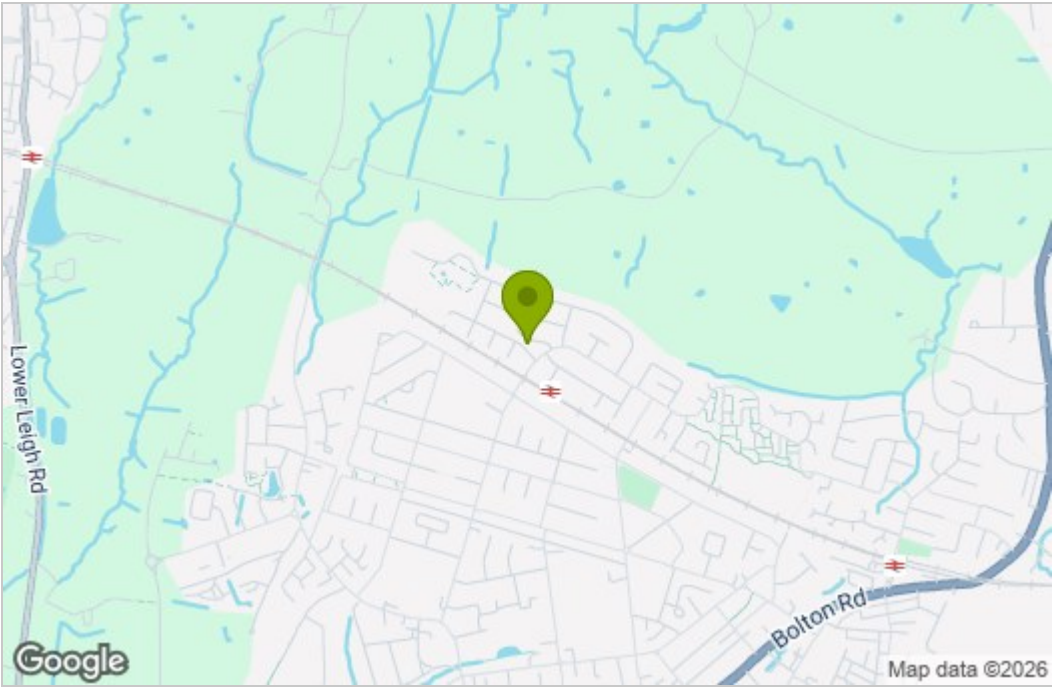


BALMER & CO in ATHERTON are delighted to offer FOR SALE this fantastic two bedroom, semi detached true bungalow located on Dalebank, a quiet cul-de-sac in Atherton. Offering generous accommodation, which is well presented throughout, plus an additional plot of land to the side (approximately 182 m² / 1957 ft² / 0.04 acres in size) it would be perfect for those with a love for gardening but wanting to downsize to single floor living. Comprising in brief; entrance porch, large living room, modern fitted kitchen, two double bedrooms and a three piece shower room. Externally, there are gardens to the front, side and rear plus a driveway for ample parking and detached garage. Early viewings highly recommended, all enquiries welcome.

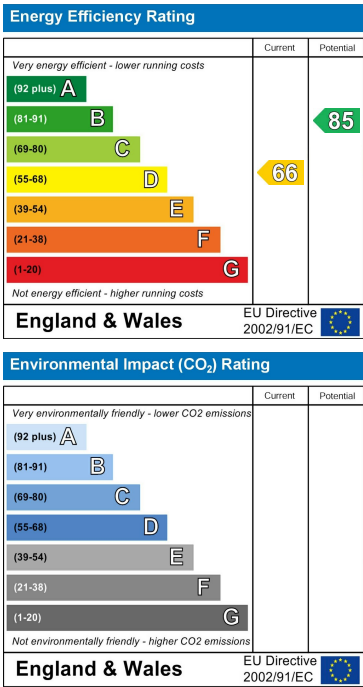
Floor Plan



Area Map



Energy Efficiency Graph



These particulars, whilst believed to be accurate are set out as a general outline only for guidance and do not constitute any part of an offer or contract. Intending purchasers should not rely on them as statements of representation of fact, but must satisfy themselves by inspection or otherwise as to their accuracy. No person in this firms employment has the authority to make or give any representation or warranty in respect of the property.