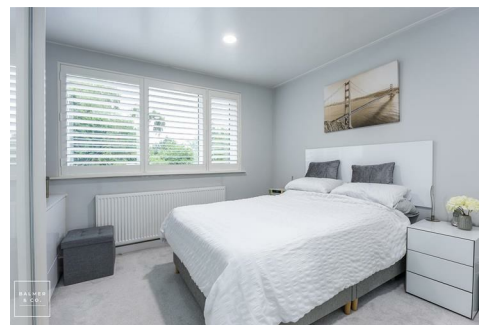
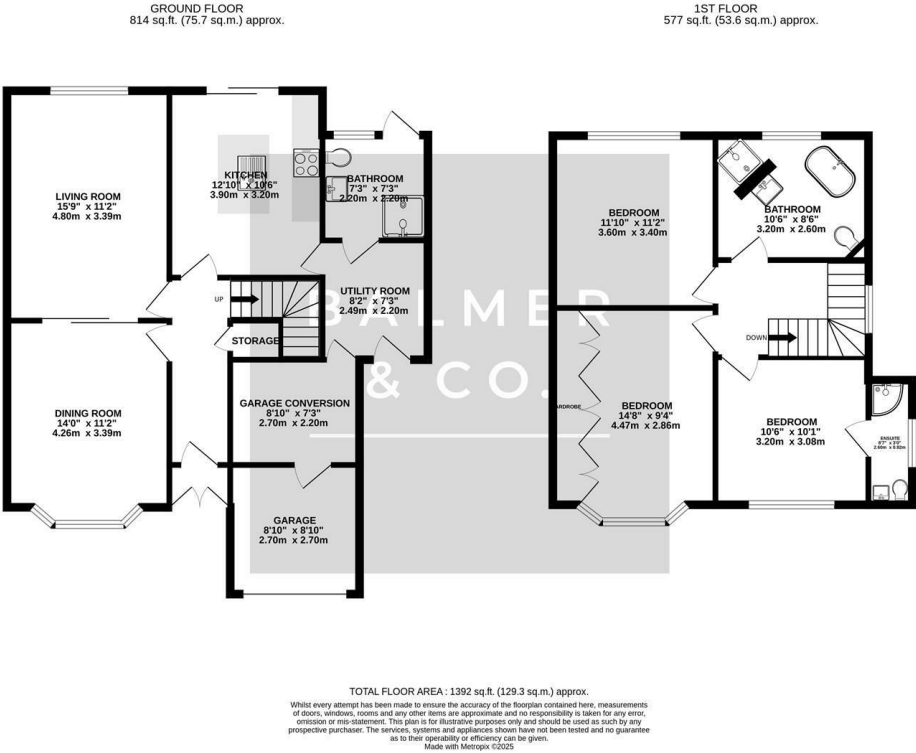


The Westlands, Swinton, M27 5FT
£525,000

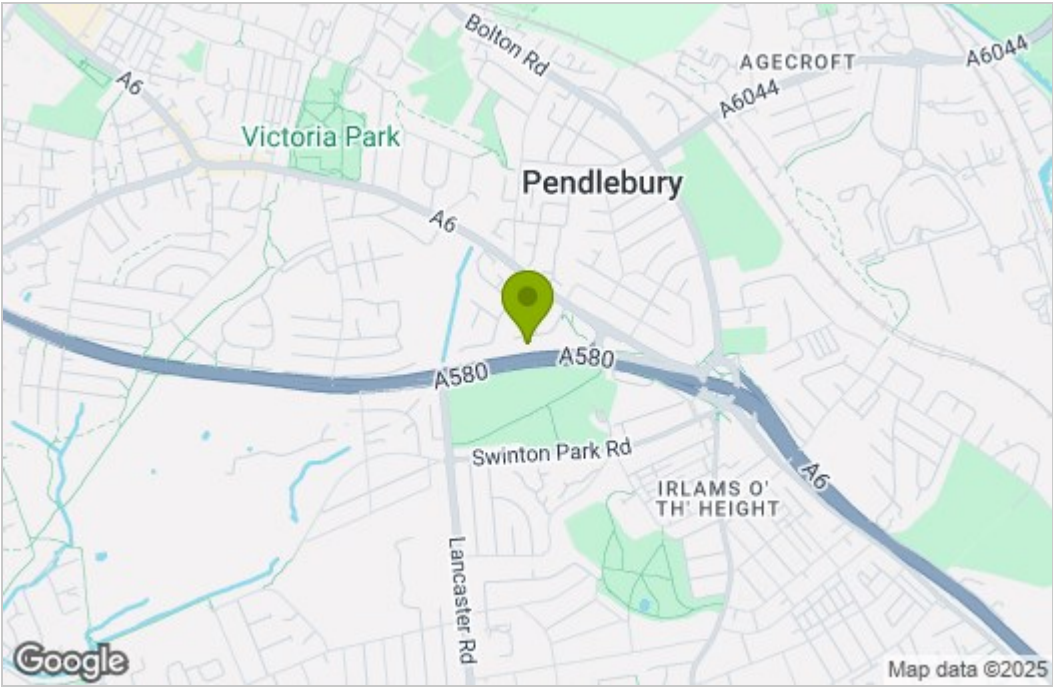


BALMER & CO in ATHERTON are delighted to offer for sale this extended detached home, tucked away on the sought after 'The Westlands' in Swinton. Immaculately presented throughout it is a true credit to its current owner as well as being conveniently placed within close proximity to a range of amenities, including fantastic transport links and must be viewed to appreciate. The ground floor comprising in brief; hallway, bay fronted reception room, second reception room with log burner, stunning fitted kitchen complete with island, separate utility room and a shower room. A part converted garage completes the ground floor. A stunning staircase takes you to the first floor where you'll find three double bedrooms, all with fitted wardrobes and one with an en-suite. A bespoke four piece bathroom suite completes the internal accommodation. Externally, a gated driveway is located to the front of the property with an enclosed garden to the rear offering a fantastic level of privacy as it is not overlooked. Early viewings highly recommended, all enquiries welcome.

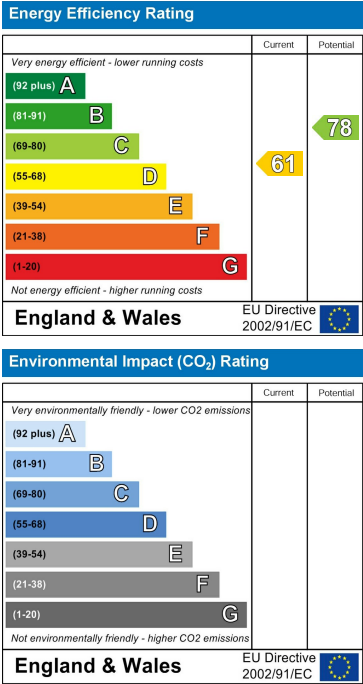
Floor Plan



Area Map



Energy Efficiency Graph



These particulars, whilst believed to be accurate are set out as a general outline only for guidance and do not constitute any part of an offer or contract. Intending purchasers should not rely on them as statements of representation of fact, but must satisfy themselves by inspection or otherwise as to their accuracy. No person in this firms employment has the authority to make or give any representation or warranty in respect of the property.