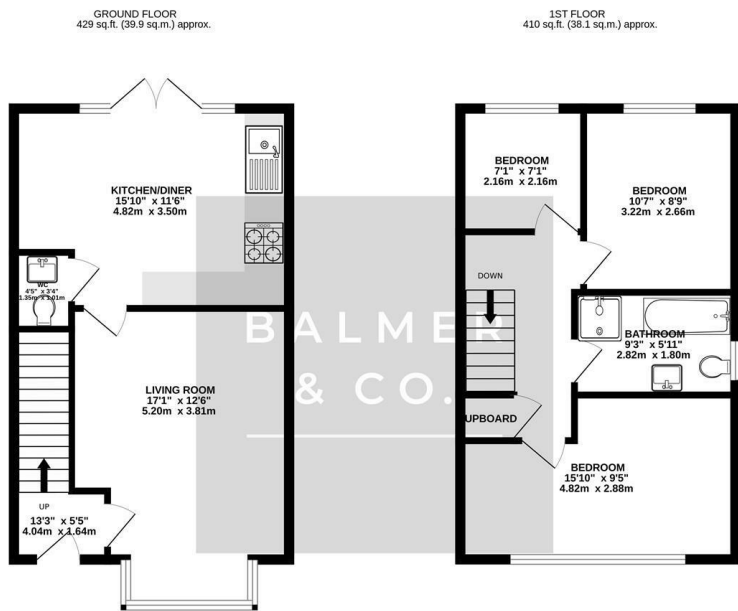


Threadneedle Place, Atherton, M46 0TW
£230,000

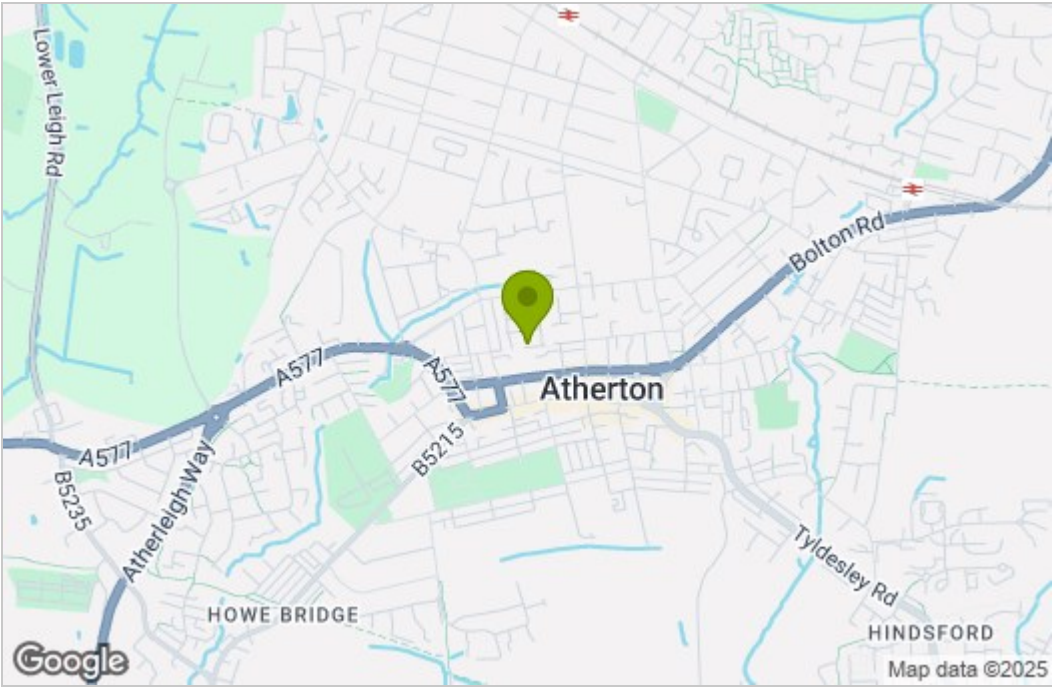


BALMER & CO in ATHERTON are delighted to offer FOR SALE this fantastic three bedroom semi-detached home on the ever popular Hamilton Square development in Atherton. Built in 2018 and offered with no onward chain, this property would suite a range of buyers. Comprising in brief; entrance hallway, living room with bay window, large kitchen/dining room with integrated appliances and French doors leading to the rear gardens with a w.c completing the ground floor. To the first floor are two well proportioned double bedrooms, a single bedroom, with four piece family bathroom completing the accommodation on offer. Externally, the property is tucked away in a remote position with garden frontage and driveway to the side, whilst to the rear there is a good sized, enclosed rear garden. Early viewings highly recommended, all enquiries welcome.

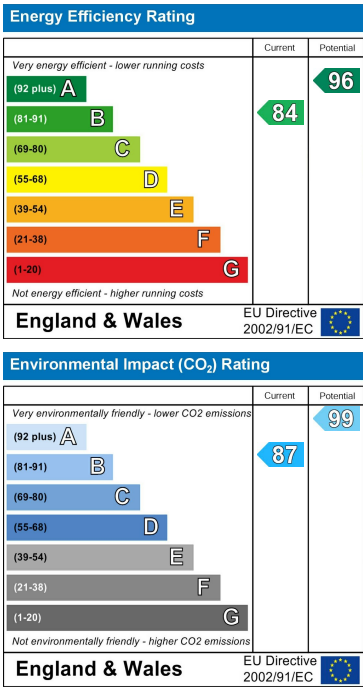
Floor Plan



Area Map



Energy Efficiency Graph



These particulars, whilst believed to be accurate are set out as a general outline only for guidance and do not constitute any part of an offer or contract. Intending purchasers should not rely on them as statements of representation of fact, but must satisfy themselves by inspection or otherwise as to their accuracy. No person in this firm's employment has the authority to make or give any representation or warranty in respect of the property.