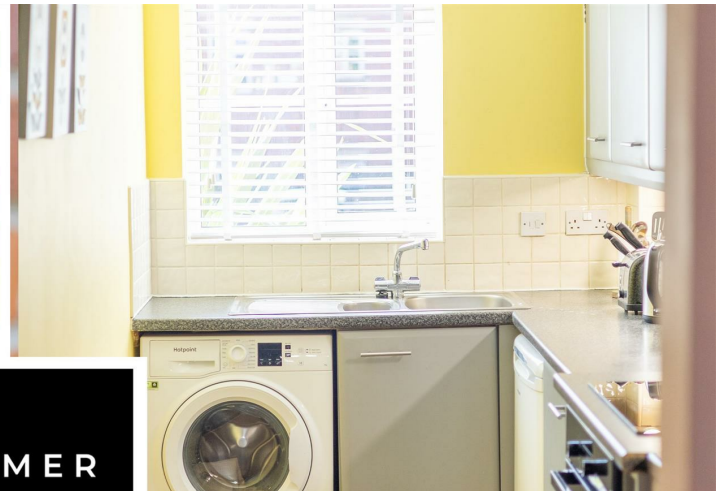
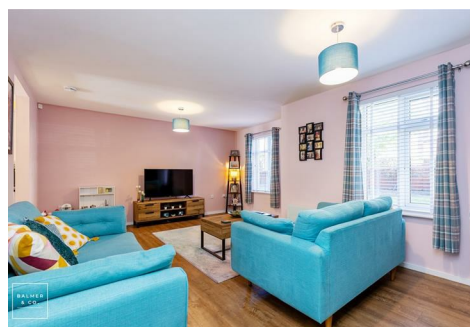


Gadfield Grove, Atherton, M46 0SJ
£139,950

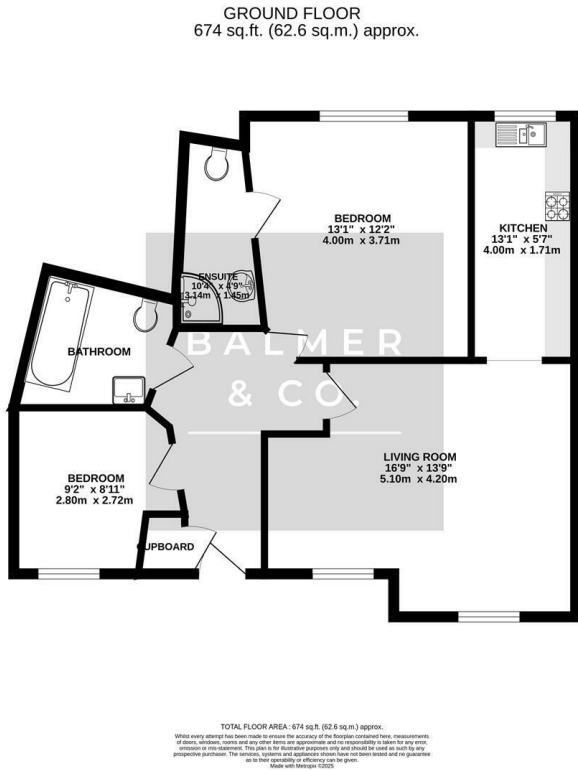


BALMER
& CO.

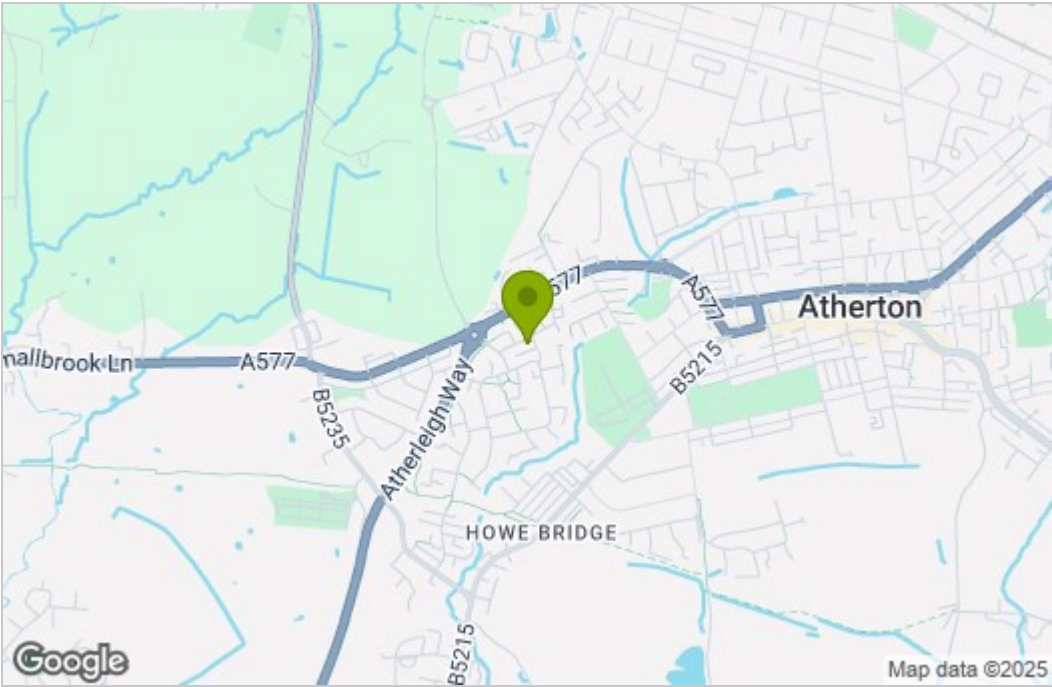


BALMER & CO in ATHERTON are delighted to offer FOR SALE this two bedroom, ground floor apartment situated on the ever popular Gadbury Fold development in Atherton. Tastefully decorated throughout with its own private entrance it would be perfect for first times buyers or those looking to downsize to single floor accommodation. Entrance to the apartment is via a private entrance which reveals a hallway leading to each of the rooms including a spacious living/dining room, fitted kitchen, two double bedrooms, the master with an en-suite and fitted storage, ;plus a three piece bathroom suite. Externally, there are communal gardens with a car park to the rear offering an allocated parking space. Early viewings highly recommended, all enquiries welcome.

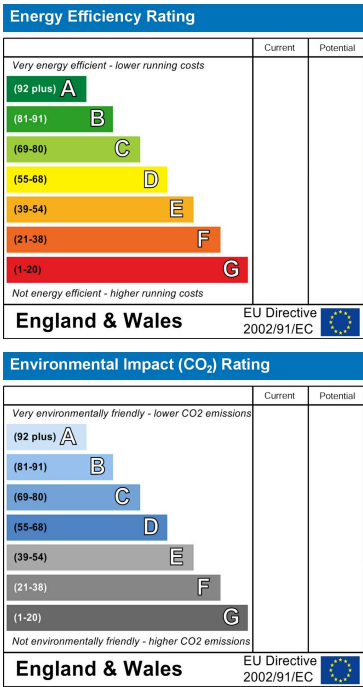
Floor Plan



Area Map



Energy Efficiency Graph



These particulars, whilst believed to be accurate are set out as a general outline only for guidance and do not constitute any part of an offer or contract. Intending purchasers should not rely on them as statements of representation of fact, but must satisfy themselves by inspection or otherwise as to their accuracy. No person in this firms employment has the authority to make or give any representation or warranty in respect of the property.