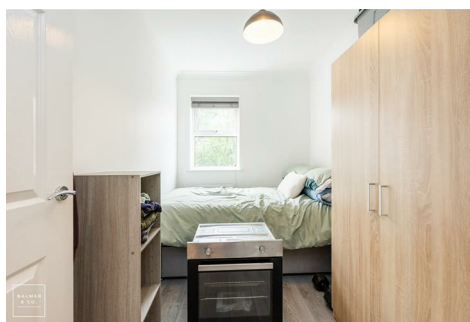


Beckford Court, Tyldesley, M29 8GF  
Offers Over £115,000

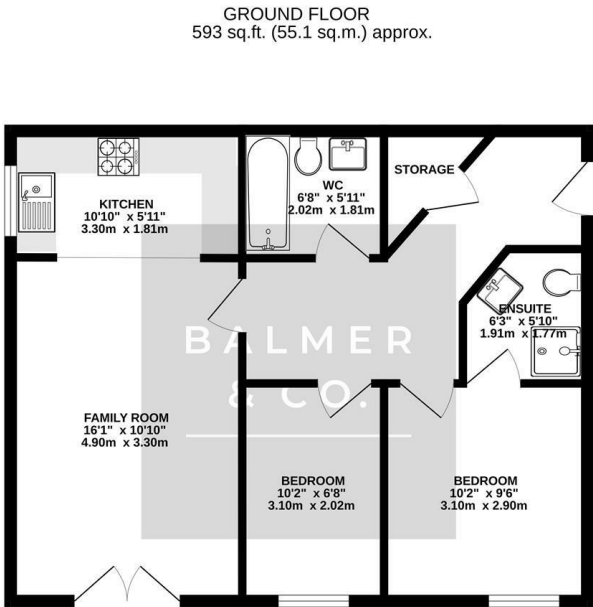


BALMER  
& CO.



BALMER & CO in TYLDESLEY are delighted to offer FOR SALE this fantastic two bedroom first floor apartment situated in a popular and well regarded development close to Tyldesley town centre. Very nicely presented throughout, this property comprises in brief of entrance hallway, large living room with Juliette balcony, modern fitted kitchen with integrated appliances, large master bedroom with ensuite shower room, second double bedroom, with a three piece bathroom completing the accommodation on offer. Externally there are well maintained communal gardens with electric gates providing secure allocated and visitor parking, whilst access to the block is via a secure intercom system. Early viewings highly recommended, all enquiries welcome.

Floor Plan

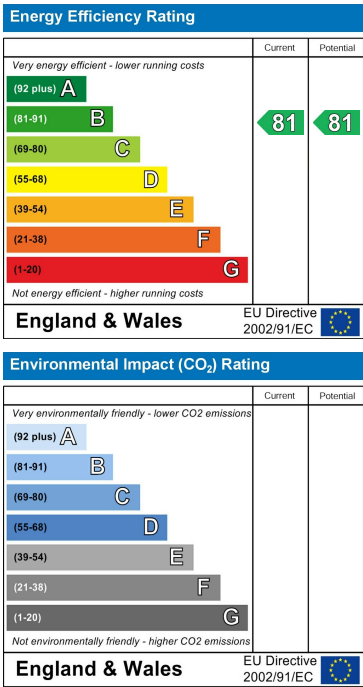


TOTAL FLOOR AREA: 593 sq.ft. (55.1 sq.m.) approx.  
While every attempt has been made to ensure the accuracy of the floorplan contained here, measurements of doors, windows, rooms and any other items are approximate and no responsibility is taken for any error, omission or misstatement. This plan is for illustrative purposes only and should be used as a guide only by prospective purchasers. The services, systems and appliances shown have not been tested and no guarantee as to their operability or efficiency can be given.  
Made with floorplan 12025

Area Map



Energy Efficiency Graph



These particulars, whilst believed to be accurate are set out as a general outline only for guidance and do not constitute any part of an offer or contract. Intending purchasers should not rely on them as statements of representation of fact, but must satisfy themselves by inspection or otherwise as to their accuracy. No person in this firms employment has the authority to make or give any representation or warranty in respect of the property.