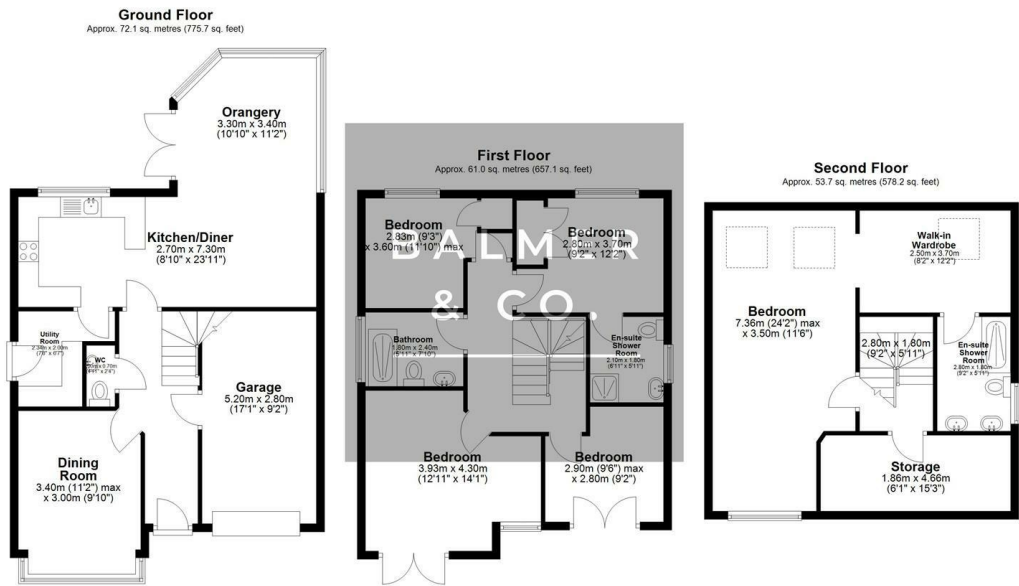


Gibfield Drive, Atherton, M46 0GR
£460,000



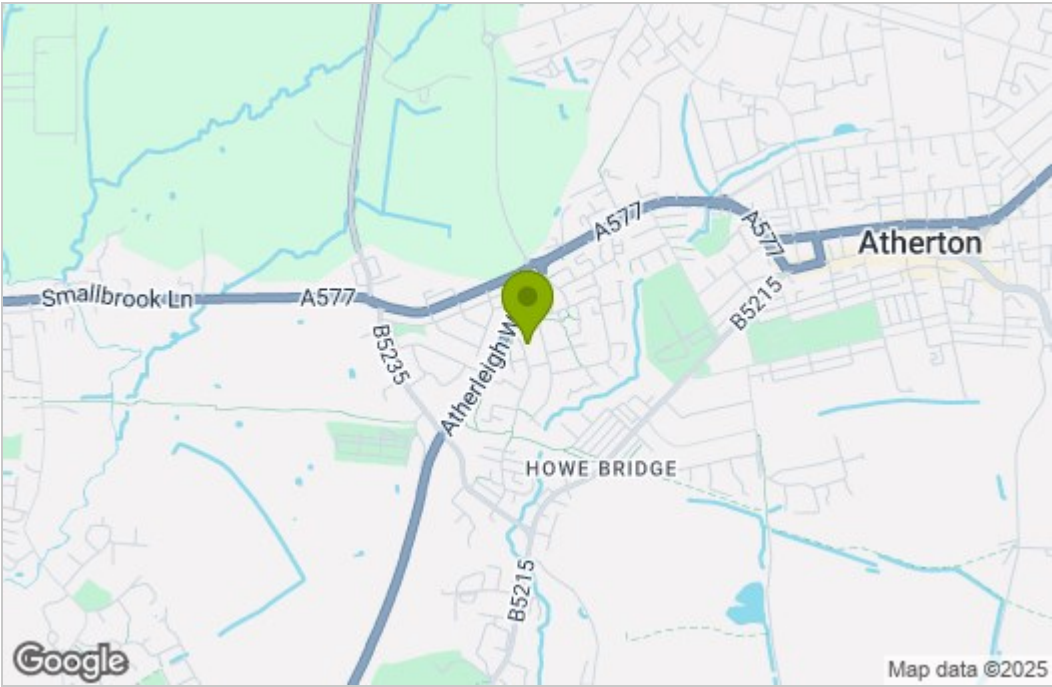
BALMER & CO in ATHERTON are delighted to offer FOR SALE this stunning five bedroom detached family home, occupying a prime spot on Gibfield Drive which is located on the ever popular Gadbury Fold development in Atherton. Offering generous accommodation set over three floors, it would be perfect for families looking for their forever home. The ground floor comprising in brief; entrance hallway with staircase to the first floor, w.c, dining room, fitted kitchen with integrated appliances, separate utility room, open plan living/dining room and an integral garage with electric door. To the first floor are three bedrooms, one with a Juliet balcony patio area, and a three piece family bathroom suite. To the second floor you'll find a spacious master bedroom complete with dressing area and en-suite shower room. A further storage room completes the internal accommodation. Externally there is off road parking for multiple vehicles whilst to the rear there is an enclosed, low maintenance garden. Early viewings highly recommended, all enquiries welcome.

Floor Plan

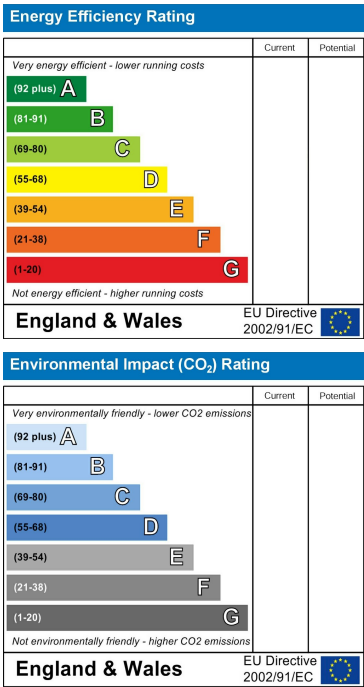


Total area: approx. 186.8 sq. metres (2011.1 sq. feet)

Area Map



Energy Efficiency Graph



These particulars, whilst believed to be accurate are set out as a general outline only for guidance and do not constitute any part of an offer or contract. Intending purchasers should not rely on them as statements of representation of fact, but must satisfy themselves by inspection or otherwise as to their accuracy. No person in this firms employment has the authority to make or give any representation or warranty in respect of the property.