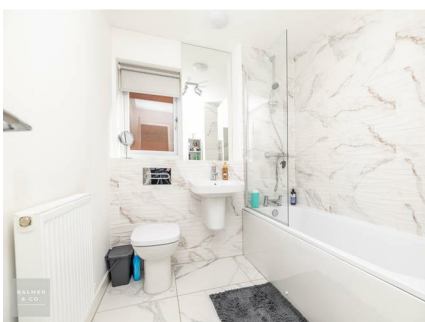
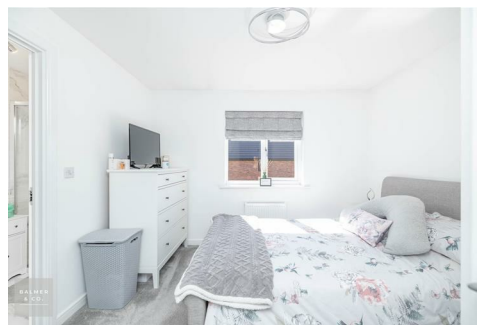
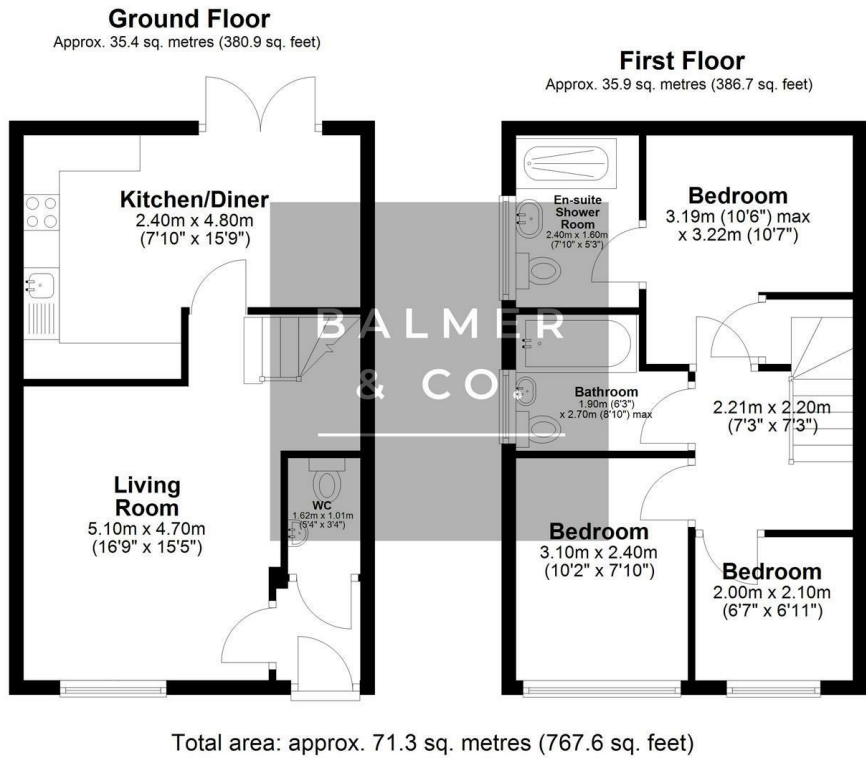


Farnworth Grove, Worsley, M28 1PF
£325,000

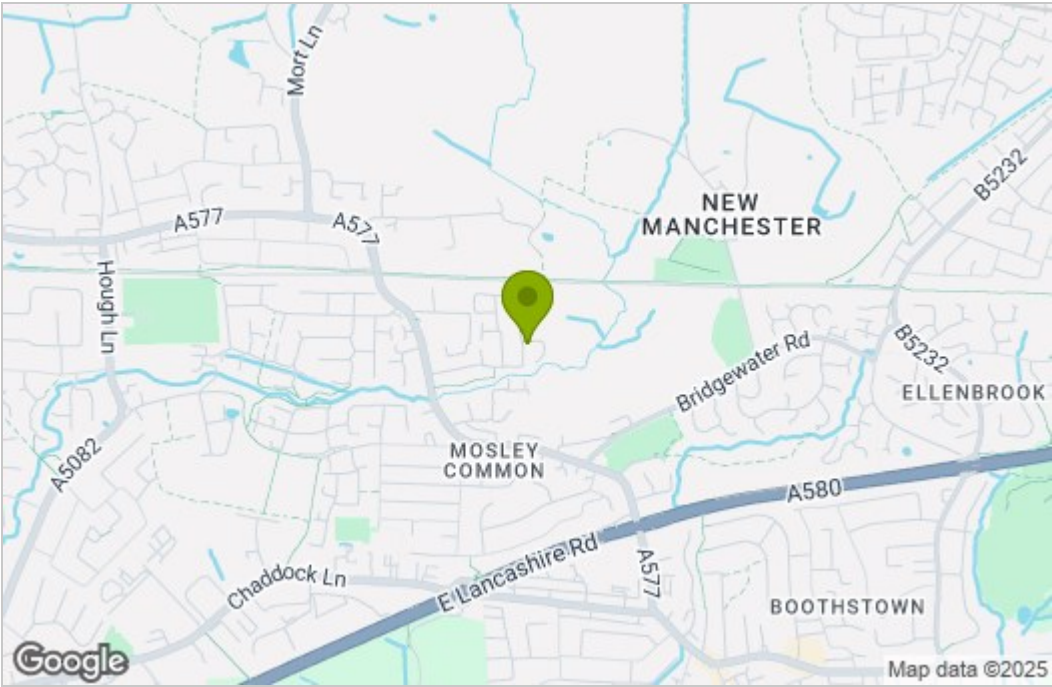


BALMER & CO in TYLDESLEY are delighted to offer FOR SALE this fantastic three bedroom semi-detached house, situated on the ever popular Elements development in Mosley Common. Built in 2023, this property is perfect for first time buyers and families, and is very nicely presented throughout. Comprising in brief of entrance hallway, large living room with feature media wall and gas fireplace, open plan modern fitted kitchen/dining room with fully integrated appliances including double oven and wine fridge, French doors leading to the rear garden, with W.C, completing the ground floor. To the first floor is a double master bedroom with fitted storage space and ensuite shower room, second double bedroom with fitted wardrobes, third single bedroom, with three piece family bathroom completing the accommodation on offer. Externally the property has a double driveway to the front providing off-road parking for two vehicles, whilst to the rear there is a fully enclosed, South facing, private garden with patio and lawn areas, with side access leading back to the front. Early viewings highly recommended, all enquiries welcome.

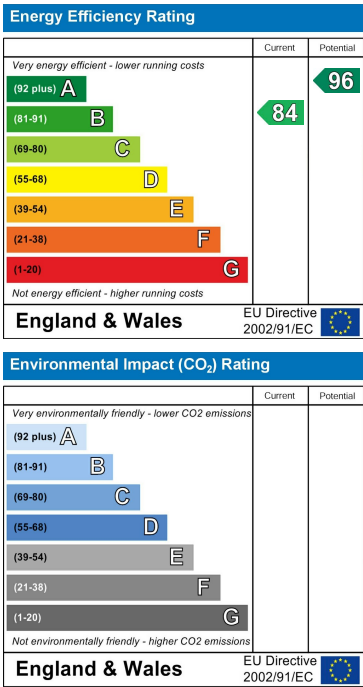
Floor Plan



Area Map



Energy Efficiency Graph



These particulars, whilst believed to be accurate are set out as a general outline only for guidance and do not constitute any part of an offer or contract. Intending purchasers should not rely on them as statements of representation of fact, but must satisfy themselves by inspection or otherwise as to their accuracy. No person in this firms employment has the authority to make or give any representation or warranty in respect of the property.