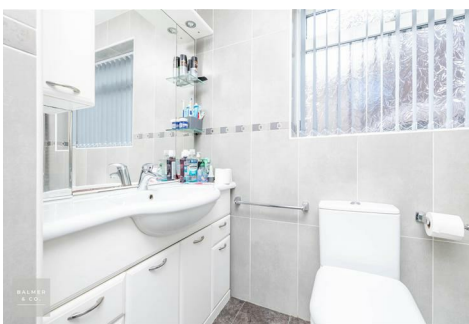
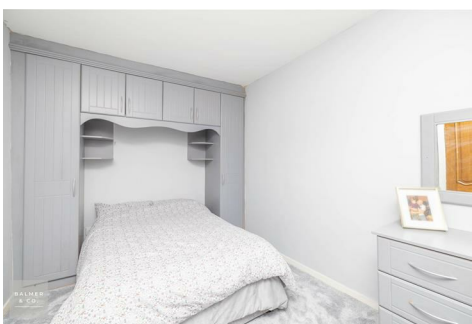
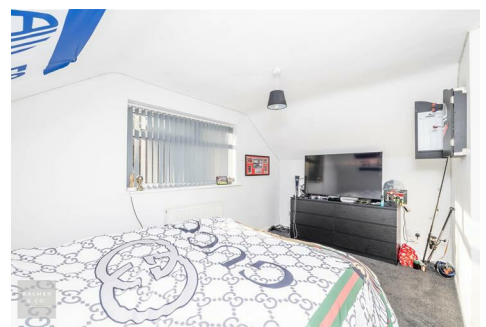
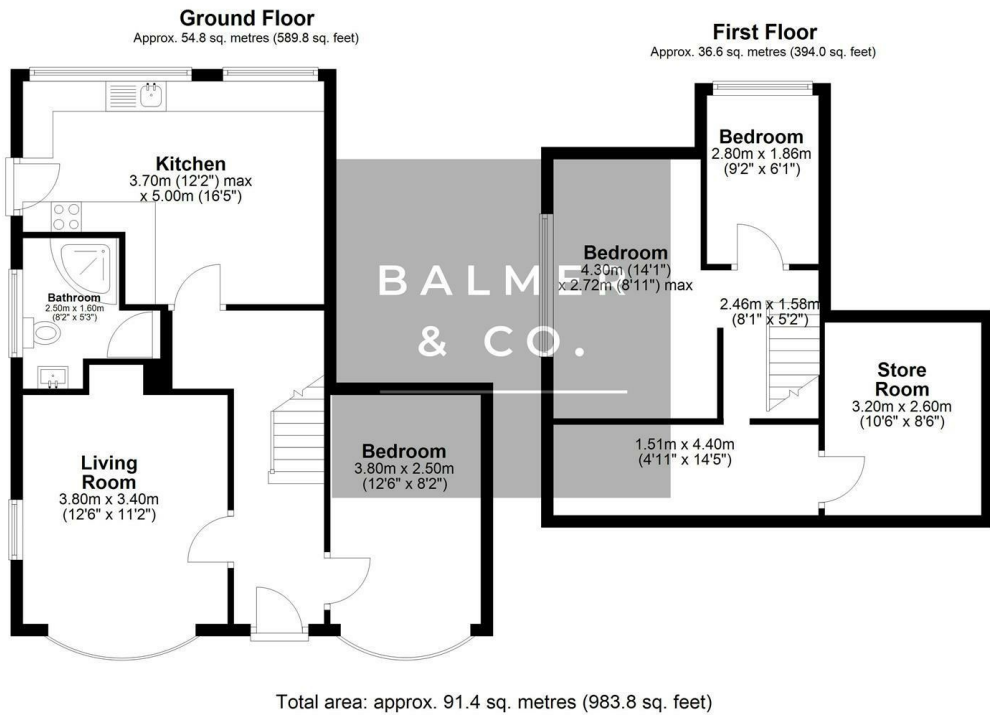


Cumberland Road, Atherton, M46 9LG  
Offers Over £230,000

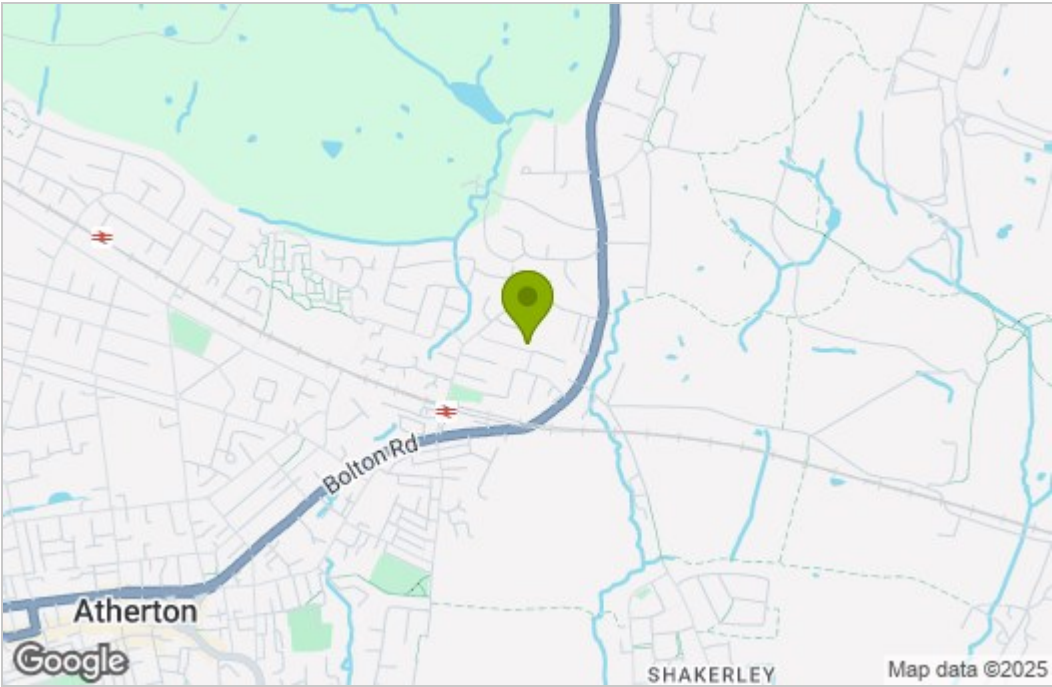


BALMER & CO in ATHERTON are delighted to offer FOR SALE this three bedroom semi-detached dormer bungalow located on Cumberland Road, a popular residential location conveniently placed close to Atherton train station. Offering spacious accommodation with single floor living if required it would suit a range of buyers. The ground floor comprising in brief; entrance hallway, living room, kitchen/dining room, double bedroom with fitted wardrobes and a shower room. To the first floor are two further bedrooms, one double and one single. Externally, there are gardens to the front and side of the property with a large driveway. To the rear is an closed garden with detached garage. Early viewings highly recommended, all enquiries welcome.

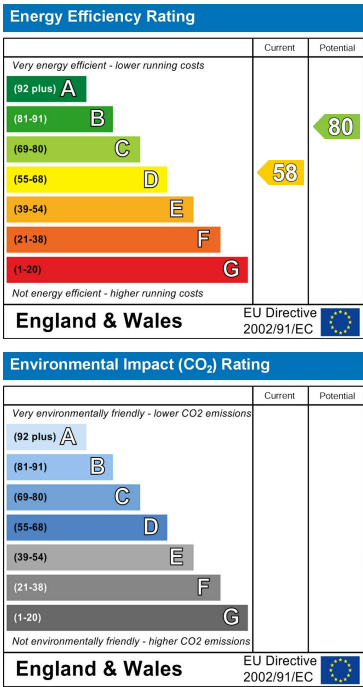
Floor Plan



Area Map



Energy Efficiency Graph



These particulars, whilst believed to be accurate are set out as a general outline only for guidance and do not constitute any part of an offer or contract. Intending purchasers should not rely on them as statements of representation of fact, but must satisfy themselves by inspection or otherwise as to their accuracy. No person in this firms employment has the authority to make or give any representation or warranty in respect of the property.