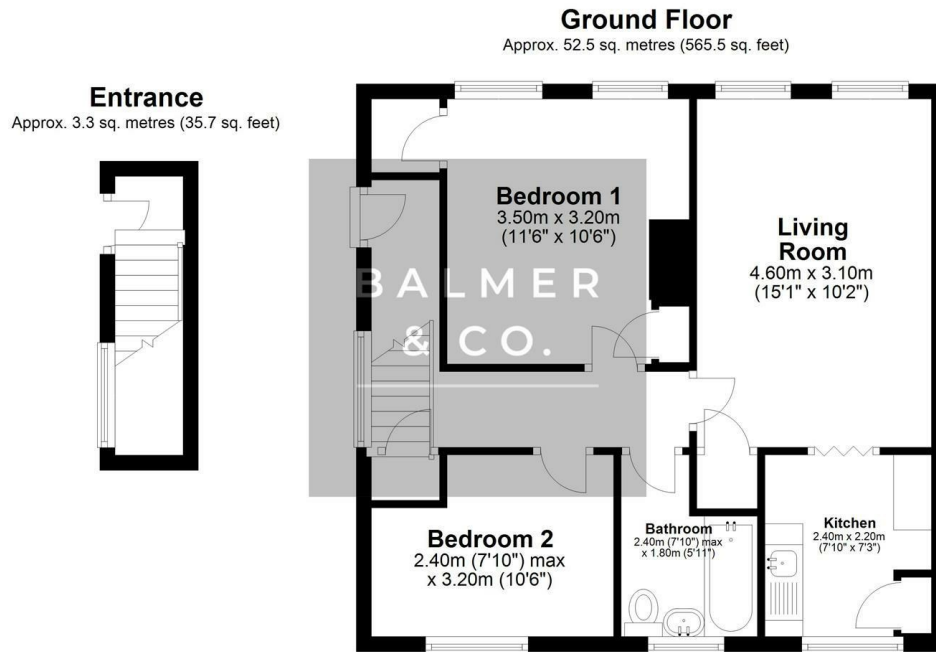


Sportside Avenue, Worsley, M28 3NP
£99,950



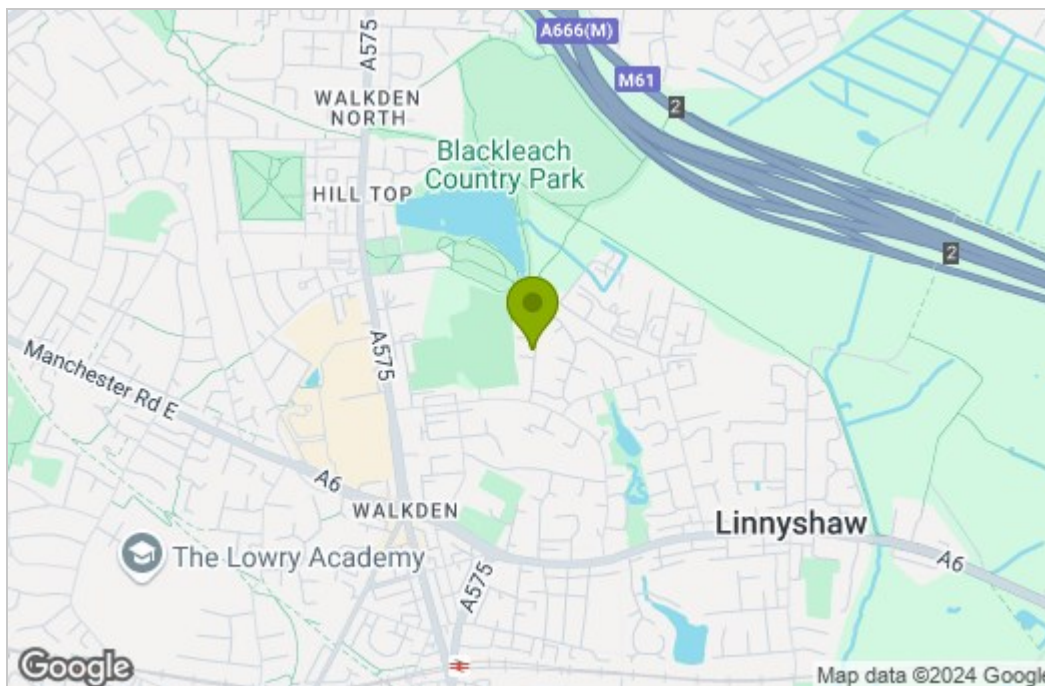
BALMER & CO are delighted to offer FOR SALE this fantastic two bedroom first floor apartment close to Walkden town centre. Offered with no onward chain, this property is nicely presented throughout and comprises in brief of of entrance hallway, staircase to the first floor, large living room, fitted kitchen, master bedroom with fitted cupboard space, second single bedroom, with a three piece family bathroom completing the accommodation on offer. Externally there is communal garden space to the front and the property is also situated close to Blackleach Country Park and the Linnyslaw Loopline. Early viewings highly recommended, all enquiries welcome.

Floor Plan

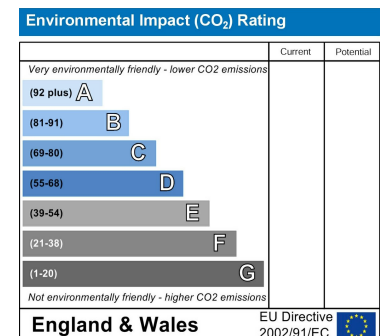
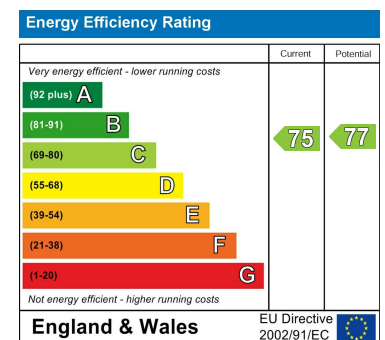


Total area: approx. 55.9 sq. metres (601.2 sq. feet)

Area Map



Energy Efficiency Graph



These particulars, whilst believed to be accurate are set out as a general outline only for guidance and do not constitute any part of an offer or contract. Intending purchasers should not rely on them as statements of representation of fact, but must satisfy themselves by inspection or otherwise as to their accuracy. No person in this firm's employment has the authority to make or give any representation or warranty in respect of the property.