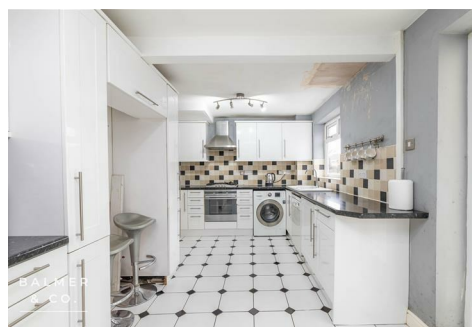
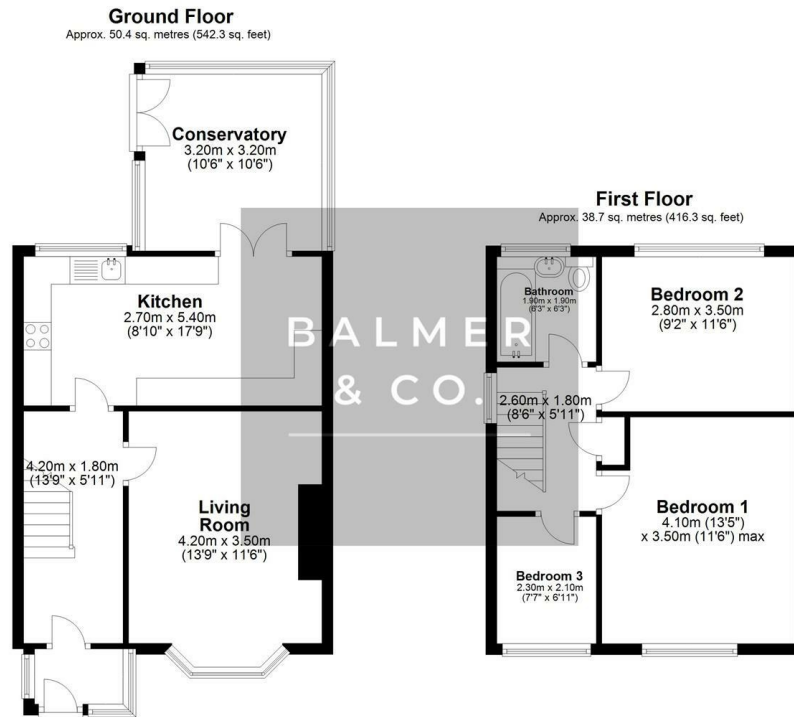


Douglas Road, Atherton, M46 9FE
Offers Over £240,000



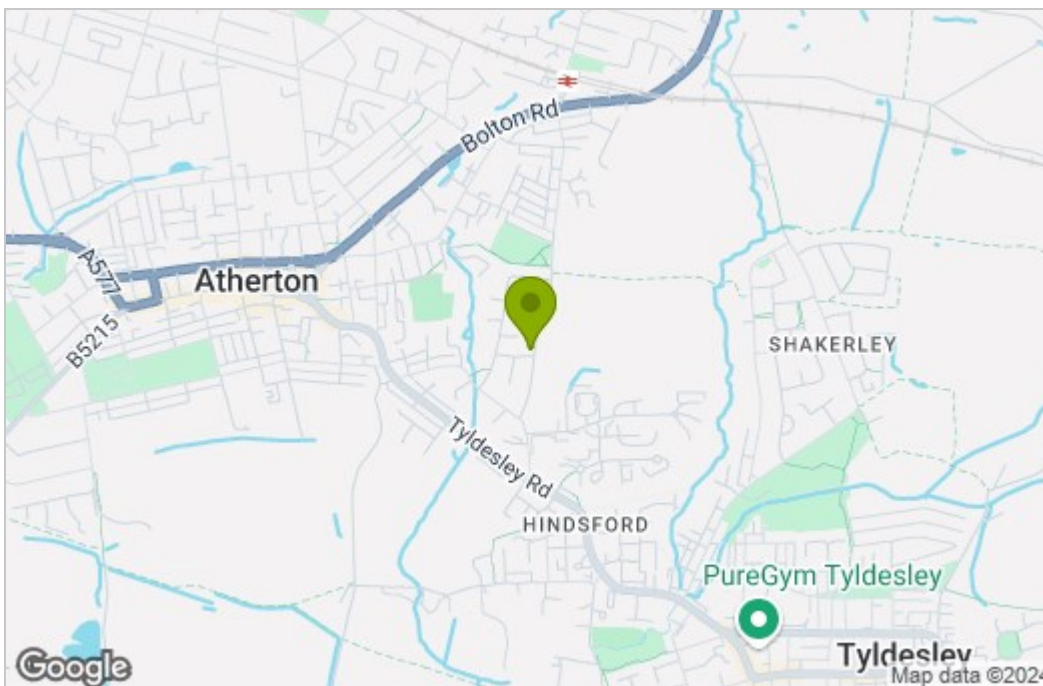
BALMER & CO are delighted to offer FOR SALE this spacious three bedroom semi-detached property, located on Douglas Road in Atherton. Offering spacious accommodation and positioned on a fantastic plot within one of Atherton's most sought after areas, it is not one to be missed. Entrance to the property is via a porch and hallway leading into the living room as well as the kitchen/diner. A large conservatory to the rear completes the ground floor. To the first floor are two double bedrooms, a single bedroom and a three piece bathroom suite room. Externally, the property offers private gardens to the front, side and rear as well as a detached garage and off road parking. Early viewings highly recommended, all enquiries welcome.

Floor Plan

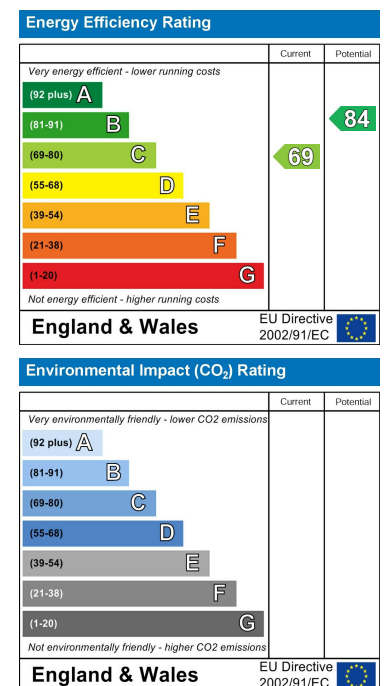


Total area: approx. 89.1 sq. metres (958.6 sq. feet)

Area Map



Energy Efficiency Graph



These particulars, whilst believed to be accurate are set out as a general outline only for guidance and do not constitute any part of an offer or contract. Intending purchasers should not rely on them as statements of representation of fact, but must satisfy themselves by inspection or otherwise as to their accuracy. No person in this firm's employment has the authority to make or give any representation or warranty in respect of the property.