

Silk Mill Street, Worsley, M28 1NX
Offers Over £275,000

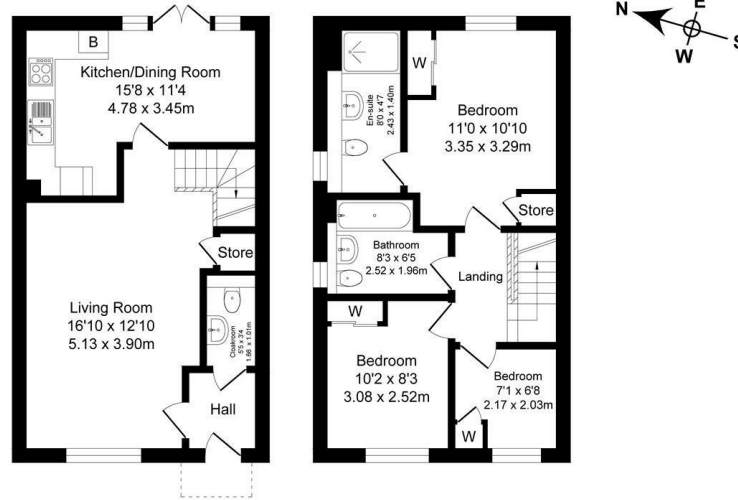


BALMER & CO in TYLDESLEY are delighted to offer FOR SALE this fantastic three bedroom semi-detached house, situated on the ever popular Elements development in Mosley Common. Built in 2020, this property is perfect for first time buyers and families, and it very nicely presented throughout. Comprising in brief of entrance hallway, large living room, open plan modern fitted kitchen/dining room with fully integrated appliances including double over and wine fridge, French doors leading to the rear garden, with W.C, completing the ground floor. To the first floor is a double master bedroom with fitted storage space and ensuite shower room, second double bedroom, third single bedroom, with three piece family bathroom completing the accommodation on offer. Outside to the front there is a driveway providing off-road parking for two vehicles, whilst to the rear there is a fully enclosed, private garden with lawn and decking areas which is also receives great sun coverage in the summer months. Early viewings highly recommended, all enquiries welcome.

Floor Plan

Silk Mill Street, Tyldesley Total Approx. Floor Area 898 Sq.ft. (83.4 Sq.M.)

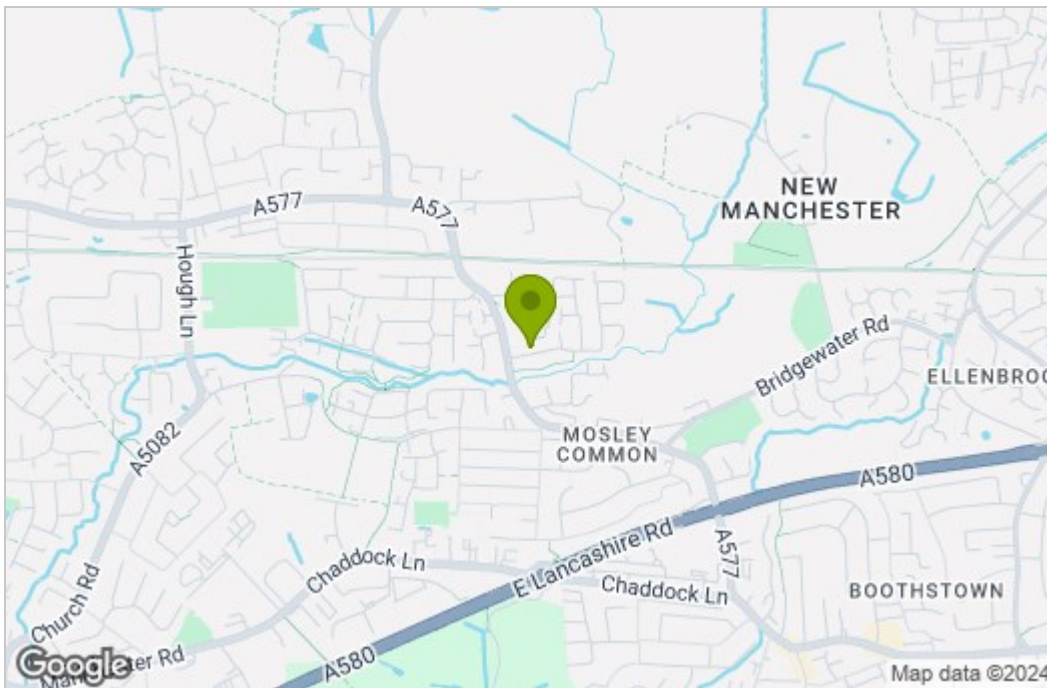
Surveyed and drawn by Lens Media for illustrative purposes only. Not to scale. Whilst every attempt was made to ensure the accuracy of the floor plan, all measurements are approximate and no responsibility is taken for any error.



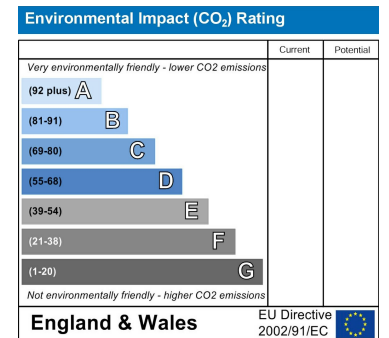
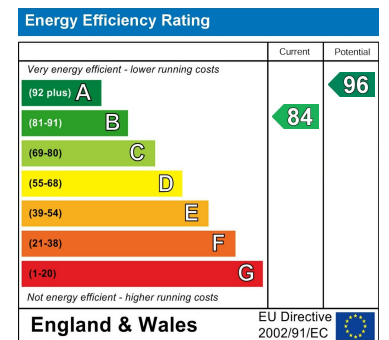
Ground Floor
Approx. Floor Area 449 Sq.Ft (41.7 Sq.M.)

First Floor
Approx. Floor Area 449 Sq.Ft (41.7 Sq.M.)

Area Map



Energy Efficiency Graph



These particulars, whilst believed to be accurate are set out as a general outline only for guidance and do not constitute any part of an offer or contract. Intending purchasers should not rely on them as statements of representation of fact, but must satisfy themselves by inspection or otherwise as to their accuracy. No person in this firm's employment has the authority to make or give any representation or warranty in respect of the property.