



A stunning home benefiting from high specification and well-planned accommodation over three floors. On the ground floor the entrance hall leads to the cloakroom and kitchen, then on to the rear aspect open plan living/dining room with French doors opening to the enclosed rear garden. The stairs, with under stairs storage, sweep up and round to the first floor with two bedrooms, family bathroom and storage then the impressive master bedroom with en-suite is on the third floor and includes eaves storage. A minimum of two parking spaces are provided.

The Cricketer is available in two exterior finishes with a slate or plain tiled roof:

Coloured Render

Beige: Plots 28, 29, 31, 32, 74, 75, 102,* and 103*

*Beige render to front, brick to side and rear elevation



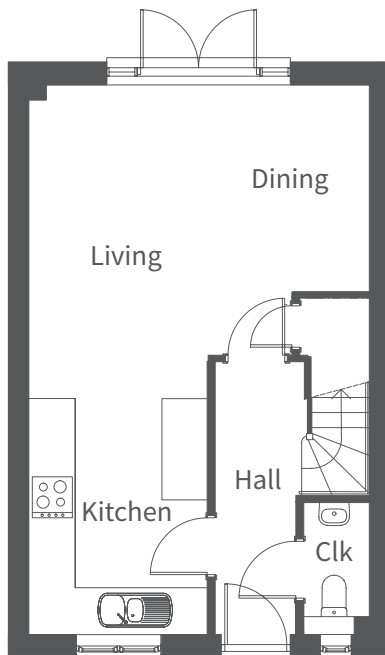
Coloured Render

Sand: Plots 33 and 34

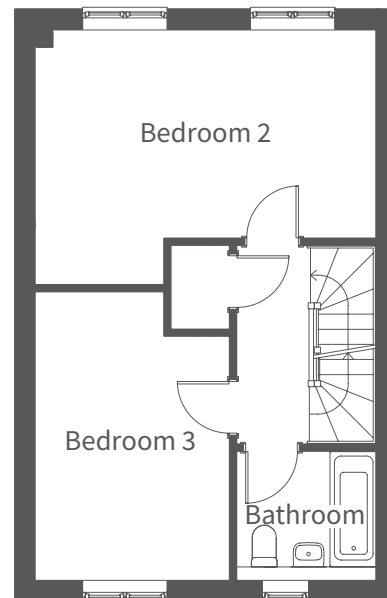


Red Brick

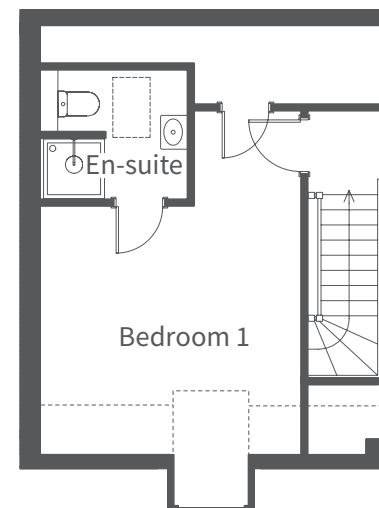
Red Brick: Plots 38 and 39



Ground Floor



First Floor



Second Floor

	Millimetres	Feet / inches
Ground Floor		
Living / Dining	4970 x 4580	16'4" x 15'0"
Kitchen	3470 x 2560	11'5" x 8'5"
First Floor		
Bedroom 2	4970 x 3720	16'4" x 12'2"
Bedroom 3	4245 x 2800	13'11" x 9'2"
Bathroom	2070 x 1900	6'9" x 6'3"
Second Floor		
Bedroom 1	5060 x 3830	16'7" x 12'7"
Store	4970 x 1140	16'4" x 3'9"
En-suite	2130 x 1890	6'12" x 6'2"

Please note: other floor plans and elevations for each property are available. As each house is built individually, maximum dimensions shown may vary +/- 50mm and the internal finishes may not always be the same. External finishes, materials, landscaping, positions and colours of windows and garages (where applicable) may also vary. Properties can also be constructed as mirror images of that shown. Please ask if you require further details or clarification.