

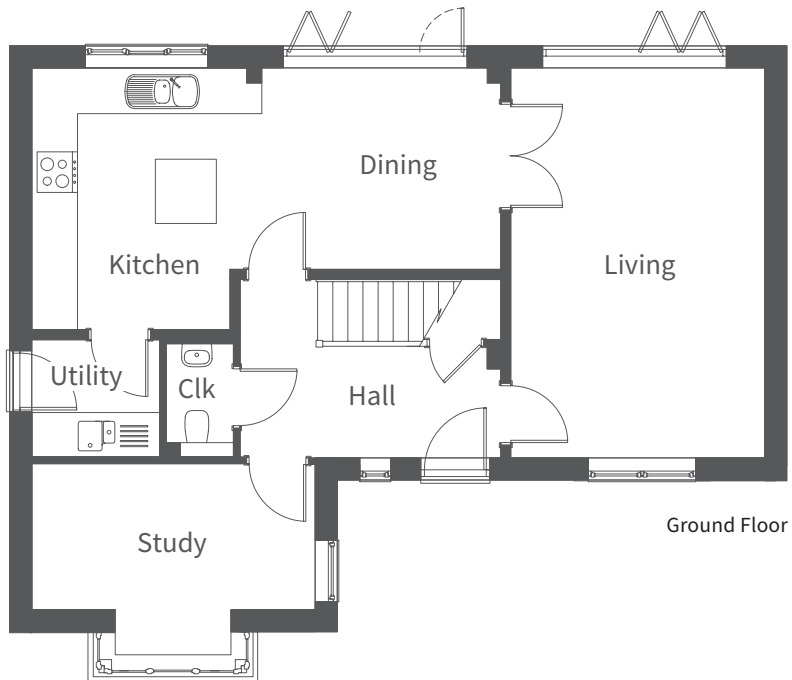


The Knowle is a stunning detached home benefiting from high specification and spacious accommodation over two floors. On the ground floor the entrance hall leads to the living room, study, cloakroom, kitchen/dining room and under stairs storage. The living room has bi-fold doors to the enclosed rear garden and double doors leading to the impressive kitchen/dining room, also with bi-fold doors opening to the garden and access to the utility room with side door. The first floor has en-suites to both the master and second bedrooms, two further bedrooms, a family bathroom and an airing cupboard. A double garage and driveway parking are provided.

The Knowle is available in one exterior finish:

Red Brick

Red Brick: Plots 87 and 89



Ground Floor	Millimetres	Feet / inches
Living	5690 x 3710	18'8" x 12'2"
Kitchen / Dining	6890 x 3820	22'7" x 12'6"
Utility	1860 x 1720	6'1" x 5'8"
Study	4120 x 2150	13'6" x 7'1"

First Floor	Millimetres	Feet / inches
Bedroom 1	4120 x 3950	13'6" x 12'12"
En-suite	3020 x 1470	9'11" x 4'10"
Bedroom 2	3890 x 3060	12'9" x 10'0"
En-suite	2090 x 1380	6'10" x 4'6"
Bedroom 3	3740 x 2930	12'3" x 9'7"
Bedroom 4	3290 x 2660	10'10" x 8'9"
Bathroom	2270 x 2090	7'5" x 6'10"

Please note: other floor plans and elevations for each property are available. As each house is built individually, maximum dimensions shown may vary +/- 50mm and the internal finishes may not always be the same. External finishes, materials, landscaping, positions and colours of windows and garages (where applicable) may also vary. Properties can also be constructed as mirror images of that shown. Please ask if you require further details or clarification.

