



## **Whitby Road, Ruislip, Middlesex, HA4 9DP**

### **Asking price £775,000 Freehold**

- **Superbly presented, spacious end terrace family home with lots of curb appeal**
  - **Within easy reach of local shops and transport links**
    - **Five double bedrooms (one ground floor)**
      - **Double glazing and central heating**
  - **Large reception room** ■ **Beautifully fitted kitchen/diner**
- **Family bathroom plus a downstairs shower room/guest cloakroom**
- **Delightful rear garden with decked patio area** ■ **Off street parking via own driveway**
  - **“Log cabin” to rear of garden**
- **Schools and public transport nearby**

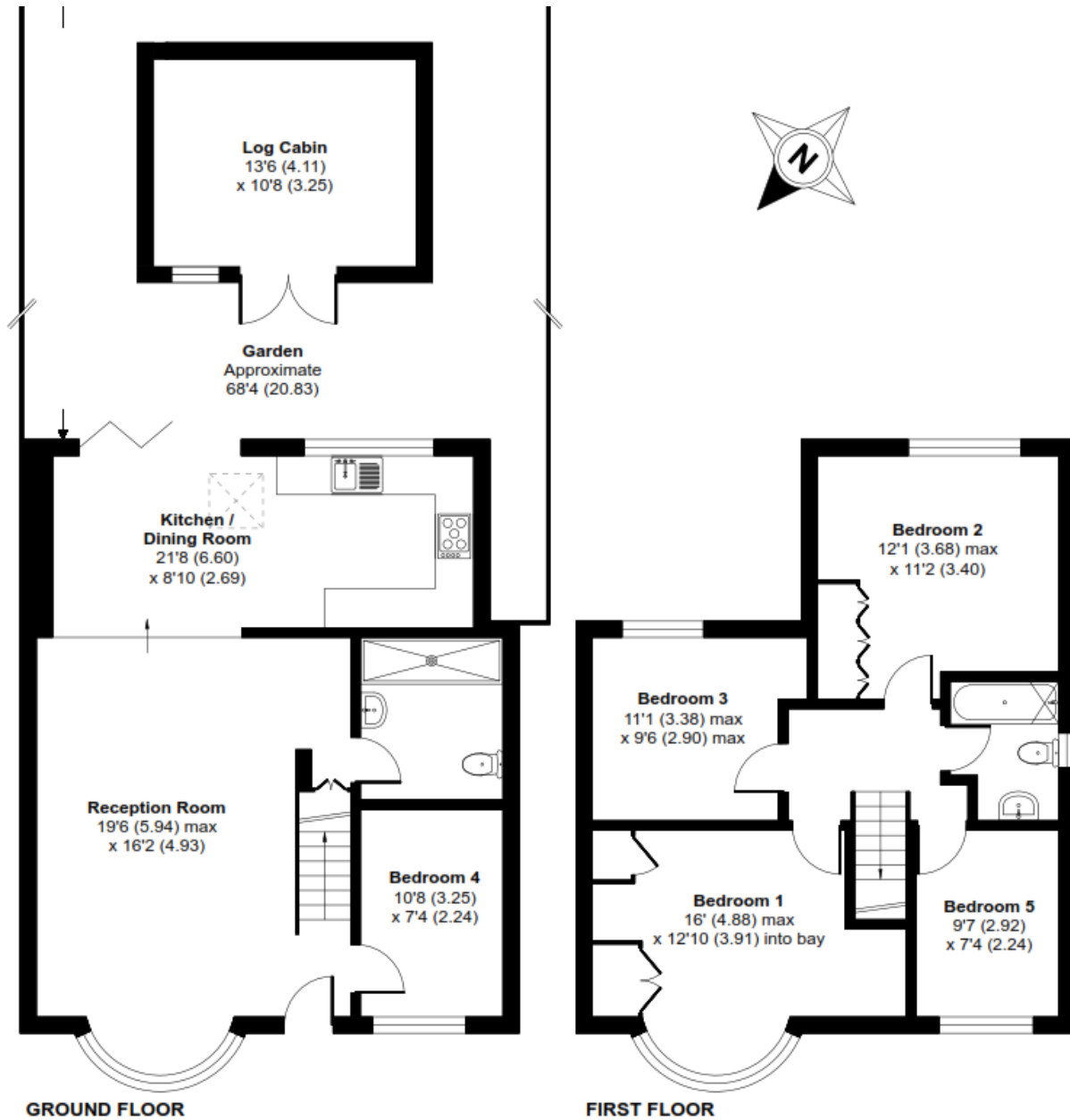
McKenzie Sakowicz Estates are proud to offer for sale this larger than average end terrace home set in a popular residential location close to shops, schools and Ruislip Manor Metropolitan/Piccadilly line Station.

The accommodation briefly comprises; entrance lobby, a large through reception, open plan fitted kitchen/diner, a downstairs cloakroom/shower room plus the fifth bedroom/study. On the first floor there are four well-proportioned double bedrooms and a family bathroom.

The property is bright, airy and spacious with versatile living for the growing family. There is, of course, gas fired central heating, double-glazing, off street parking for at least two to three cars via own driveway. To the rear is a garden which is mainly laid to lawn, a large timber decked patio area plus a "log cabin" providing storage and a recreation room. Viewing is an absolute must to appreciate the size and potential of this fabulous home.

Whitby Road runs off Victoria Road, only an 18 minute walk from Ruislip Manor Metropolitan and Piccadilly line station and of equidistance to South Ruislip Central Line Station. Lady Bankes and Ruislip High Schools are within walking distance. The A40 with links to M40 and M25 is only a short drive away giving easy access to London and The Home Counties.





Floor plan produced in accordance with RICS Property Measurement Standards incorporating International Property Measurement Standards (IPMS2 Residential). © nichecom 2023. Produced for McKenzie Sakowicz Estates. REF: 1016521

