







 3 Bedrooms |  2 Receptions |  2 Bathrooms |  EPC Current C

Helliwell & Co. are proud to present this charming double-fronted three-bedroom freehold house set on a quiet residential road moments away from the High Street and Hanwell Elizabeth Line Station.

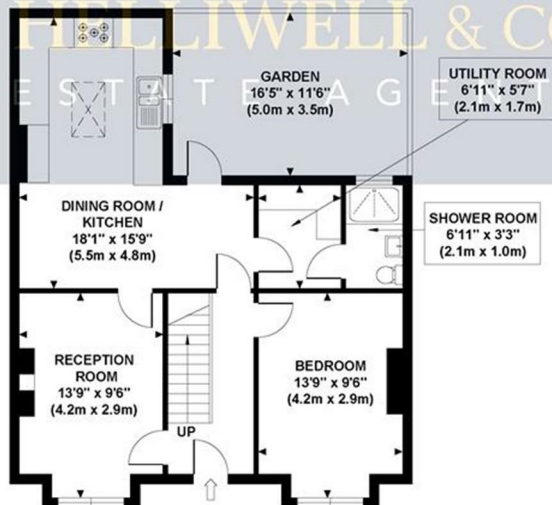
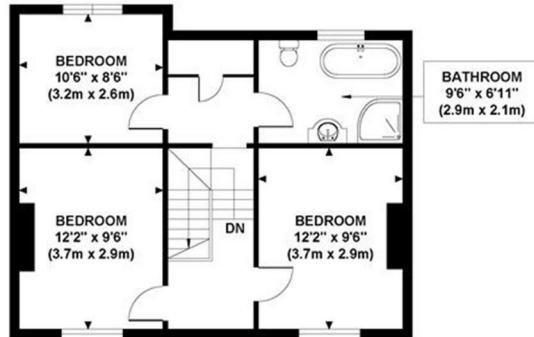
The current owners have tastefully upgraded this three-bedroom house, including the installation of newly fitted plantation shutters on both sides throughout. As you enter a quaint walled front garden, you are met with double-fronted reception rooms on either side, with ample storage, wooden flooring and neutral decor. This leads into the dining room, a well-appointed fitted kitchen with integrated appliances, including a dishwasher and a range master cooker. The kitchen has been extended and benefits from a large skylight. There is access to a well-maintained private south-facing garden along with a practical ground-floor utility and shower room. Upstairs, you have three evenly spread double bedrooms and a stylish bathroom with a separate shower and claw bathtub. Offered to the market with no onward chain.

Maunder Road is situated in a popular residential area and is within reach of a variety of local amenities, including shops, cafes, pubs, and restaurants. A number of bus routes are close by, including routes to Ealing Broadway. Hanwell station (Elizabeth Line) is just under half a mile away, and Boston Manor tube station (Piccadilly Line) is approximately one mile away. The leafy green open spaces of Elthorne Park are also close by.

- Double Fronted
- Three Bedrooms
- Two Receptions
- Two Bathrooms
- No Onward Chain
- South Facing Garden
- Tenure: Freehold
- Council Tax Band: E

MAUNDER ROAD

Approximate Gross Internal Area
1120 sq ft / 104.05 sq m



Although every attempt has been made to ensure accuracy, all measurements are approximate and no responsibility is taken for any error, omission, or mid-statement. This floor plan is for illustrative purposes only and not to scale. Measured in accordance to RICS standards.

