



HELLIWELL & CO
ESTATE AGENTS

Drayton Green, Ealing, W13

Guide Price £1,100,000





🛏️ 4 Bedrooms | 🛋️ 1 Receptions | 🚿 3 Bathrooms | 📊 EPC Current B

Helliwell & Co is proud to present this wonderful four bedroom townhouse, built in 2014 and a stone's throw from West Ealing Crossrail.

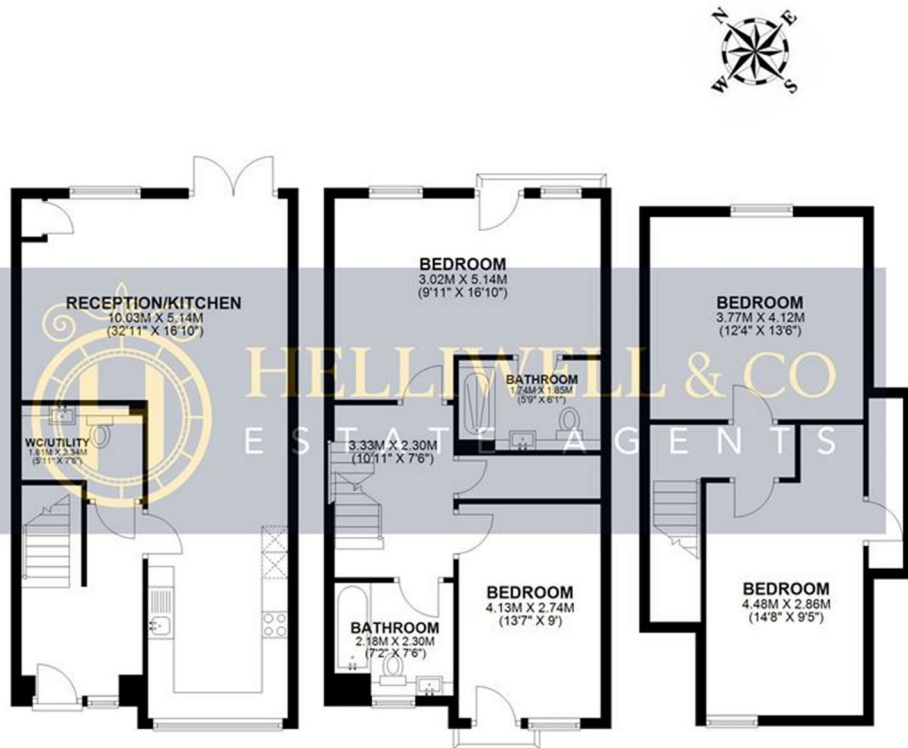
Set within a quiet gated development and arranged over three floors, this immaculate property offers a spacious entrance hall which leads into a bright open-plan living area, with doors opening directly onto a private garden. To the rear of this space is a fully fitted kitchen with integrated appliances and dining area. Also on this level there is a separate cloakroom/utility room for added convenience. On the first floor there are two double bedrooms both with doors opening onto Juliet balconies, the master with a spacious en-suite shower room. There is a large walk-in storage cupboard on the landing as well as a modern family bathroom. On the top floor a further two double bedrooms with vaulted ceilings offer plenty of family space, along with another walk-in storage area. Additional benefits include allocated parking, gated entry and solar panels.

Located on a residential street just a short stroll from West Ealing (Elizabeth Line) station and within easy reach of Ealing Broadway's amenities and station (Central and District lines and Elizabeth Line). The location also has several nearby parks and an abundance of restaurants, cafes, and shops, including a large Waitrose supermarket.

- Four Bedroom House
- Two Bathrooms
- Newly Built in 2014
- Solar Panels
- Private Garden
- Allocated Parking
- Gated Development
- Excellent Crossrail Location
- Tenure: Freehold
- Council Tax Band: F

DRAYTON GREEN

TOTAL AREA: APPROX.138.50 SQ. METRES (1490.90SQ. FEET)



Although every attempt has been made to ensure accuracy, all measurements are approximate and no responsibility is taken for any error, omission, or mid-statement. This floor plan is for illustrative purposes only and not to scale. Measured in accordance to RICS standards