

LAWRENCE  
THREE  
BEDROOM  
HOME

BLOOR HOMES



A three bedroom detached home with a substantial lounge and an impressive open plan kitchen / dining area with French doors leading to the rear garden. Upstairs boasts three generous bedrooms with the master benefitting from an en suite shower room.

LAWRENCE

A STYLISH THREE BEDROOM  
DETACHED HOME

**LAWRENCE  
THREE  
BEDROOM  
HOME**

**FIRST FLOOR:**

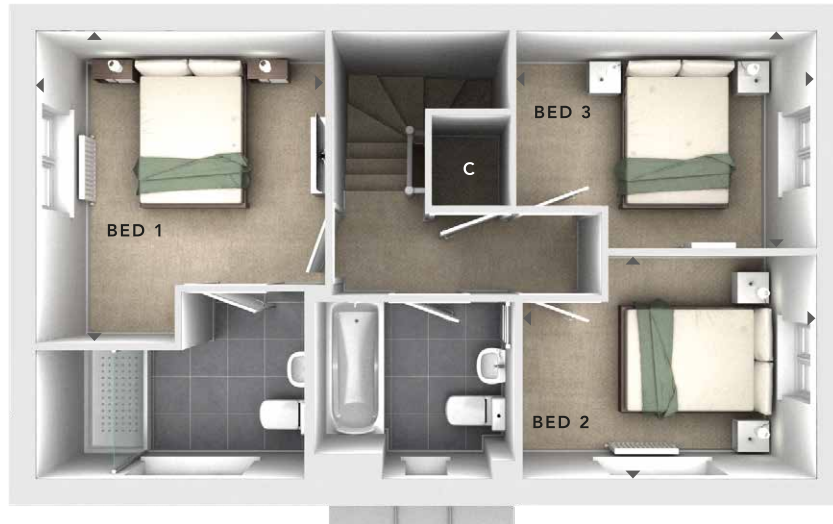
**BEDROOM 1**  
3.21m x 3.48m  
10'6" x 11'5"

**EN SUITE**

**BEDROOM 2**  
3.28m x 2.45m  
10'9" x 8'0"

**BEDROOM 3**  
3.30m x 2.43m  
10'10" x 7'11"

**BATHROOM**



**FIRST  
FLOOR**

**GROUND FLOOR:**

**LOUNGE**  
3.26m x 4.95m  
10'8" x 16'3"

**KITCHEN / DINING**  
3.21m x 4.95m  
10'6" x 16'3"

**CLOAKS**



**GROUND  
FLOOR**

<b>C</b>	- Storage
△	- External Access
◄►	- Measurement Points
<b>© Bloor Homes • 301B 4.7</b>	



These particulars are intended as a preliminary guide for prospective purchasers and should not be relied upon. The elevational treatment for individual house types shows a typical arrangement. Details of materials and design treatments may vary. Any artist impressions shown are not intended to represent any particular plot. Purchasers are advised to inspect the layout plan to establish the arrangement of the house and surrounding property. Internal layouts show a general arrangement which may vary from plot to plot. Room sizes given are approx. overall finished room sizes and subject to normal building tolerances (ie ± 75mm). In all instances purchasers are advised to inspect plot specific information available from our sales team. Nothing in these particulars or verbal assurance shall form or constitute part of any contract, and are given without any responsibility on behalf of Bloor Homes.