



DM&Co.
— SALES & LETTINGS —

The Green Stratford Road Shirley, B90 4GW

The Walnut is a four bedroom mid terrace house, offering flexible family living space, set over three floors. The Green is ideally situated for a range of entertainment options and leisure activities, with Birmingham city centre only 10 miles away. Ready Autumn 2024.
Part Exchange Available



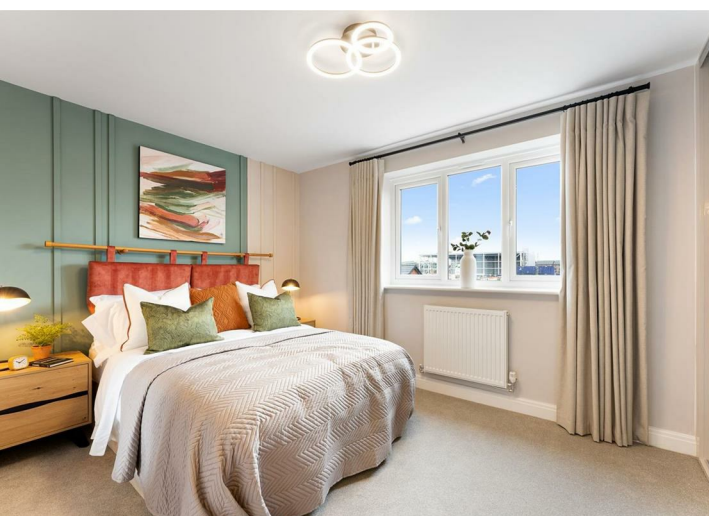
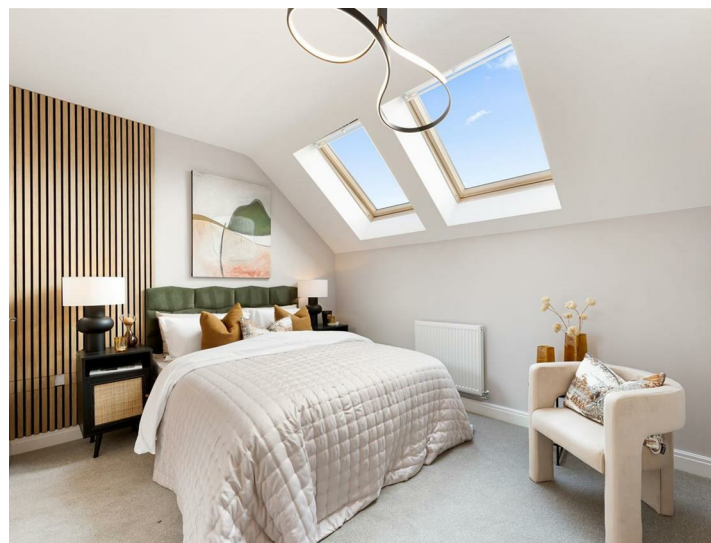
DETAILS

Your Text Here



OUTSIDE

Your Text Here



GENERAL INFORMATION

Planning Permission & Building Regulations: It is the responsibility of Purchasers to verify if any planning permission and building regulations were obtained and adhered to for any works carried out to the property.

Tenure: Freehold.

Services: All mains services are connected to the property. However, it is advised that you confirm this at point of offer.

Local Authority: Solihull Metropolitan Borough Council.

Council Tax Band: New Build.

OTHER SERVICES

DM & Co. Homes are pleased to offer the following services:-

Residential Lettings: If you are considering letting your property, please contact the office on 0121 775 0101, Option 2.

Mortgage Services: If you would like advice on the best mortgages available, please contact us on 0121 775 0101.

Agents Note: Whilst every care has been taken to prepare these sales particulars, they are for guidance purposes only. All measurements are approximate are for general guidance purposes only and whilst every care has been taken to ensure their accuracy, they should not be relied upon and potential buyers are advised to recheck the measurements.

FEATURES

- New Build Mid Terrace House
- Convenient Location
- Lounge & Separate Kitchen/Family/Dining Room
- Guest Cloakroom & Utility
- Two First Floor Bedrooms & Family Bathroom
- Principal Bedroom on Second Floor with En-Suite Shower Room And Bedroom Four
- Parking For Two Cars
- 10 Year NHBC Warranty
- 2 Year Wain Homes Warranty

SIZE

Total - 1257.00 sq ft

VIEWING

Book a viewing with Sole Agents DM & Co. Homes by phone or email:

📞 0121 775 0101 Option 1.

@ newhomes@dmandcohomes.co.uk

Agents Note: Whilst every care has been taken to prepare these sales particulars, they are for guidance purposes only. All measurements are approximate are for general guidance purposes only and whilst every care has been taken to ensure their accuracy, they should not be relied upon and potential buyers are advised to recheck the measurements



This floor plan is for illustration purposes only, this is not intended to be a measured/scaled survey or comply with RICS guidelines. All measurements (including total floor area) openings, orientation and floor area are approximate. No details are guaranteed, they cannot be relied upon for any purpose and do not form part of any agreement. A party must rely upon its own inspection(s). No responsibility is taken for any error, omission, or mis-statement.
Plan produced using PlanUp.

